

RIGHT OF WAY AND TRACK MAP

MISSABE DIVISION
DULUTH, MISSABE AND IRON RANGE RAILWAY

BIWABIK BRANCH

STATION 0+0.0 TO STATION 211+20

SCALE: 1" = 400 FT.

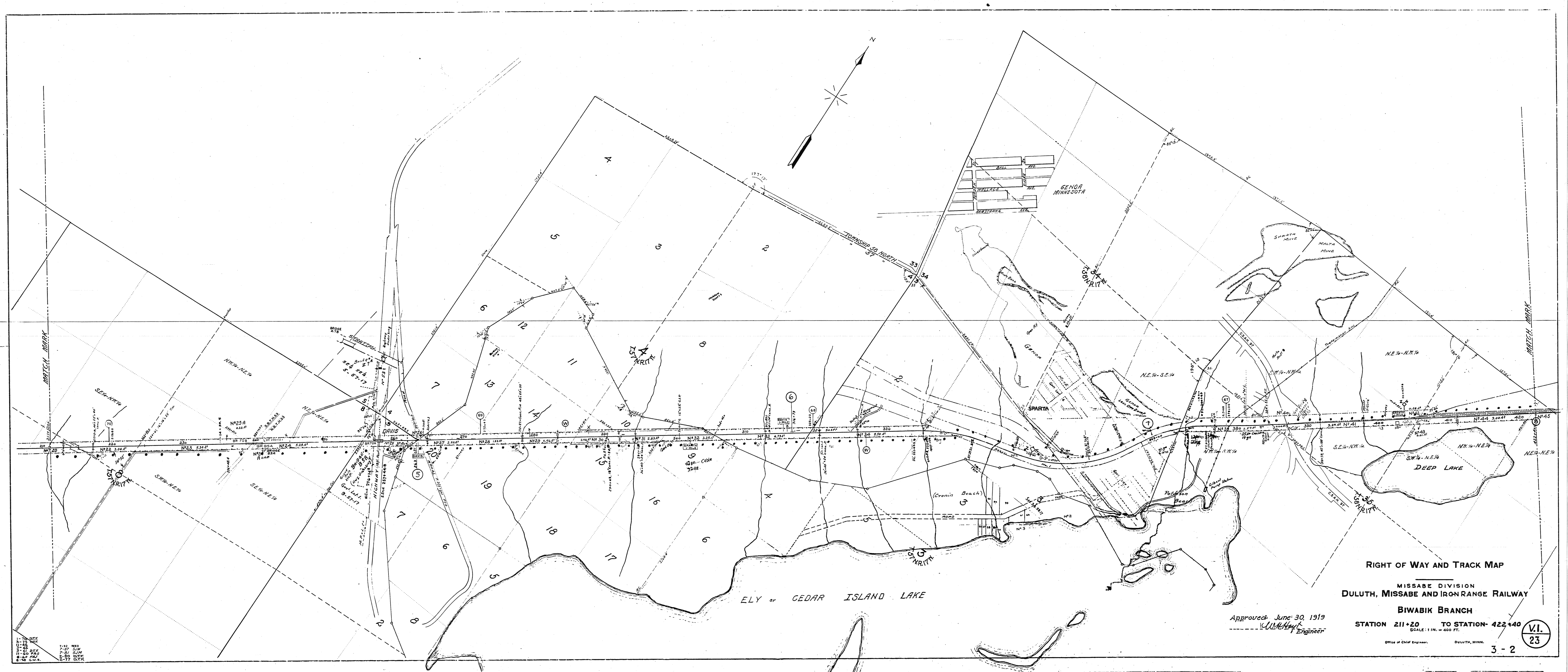
Approved June 30, 1913

J. W. Keefe
Engineer

Official Chief Engineer, DULUTH, MINN.



7-82 REED
6-85 S.W.
5-90 S.W.
4-95 S.W.
3-100 S.W.
2-105 S.W.
1-110 S.W.
0-115 S.W.
1-120 S.W.
2-125 S.W.
3-130 S.W.
4-135 S.W.
5-140 S.W.
6-145 S.W.
7-150 S.W.
8-155 S.W.
9-160 S.W.
10-165 S.W.



RIGHT OF WAY AND TRACK MAP
 MISSABE DIVISION
DULUTH, MISSABE AND IRON RANGE RAILWAY
BIWABIK BRANCH

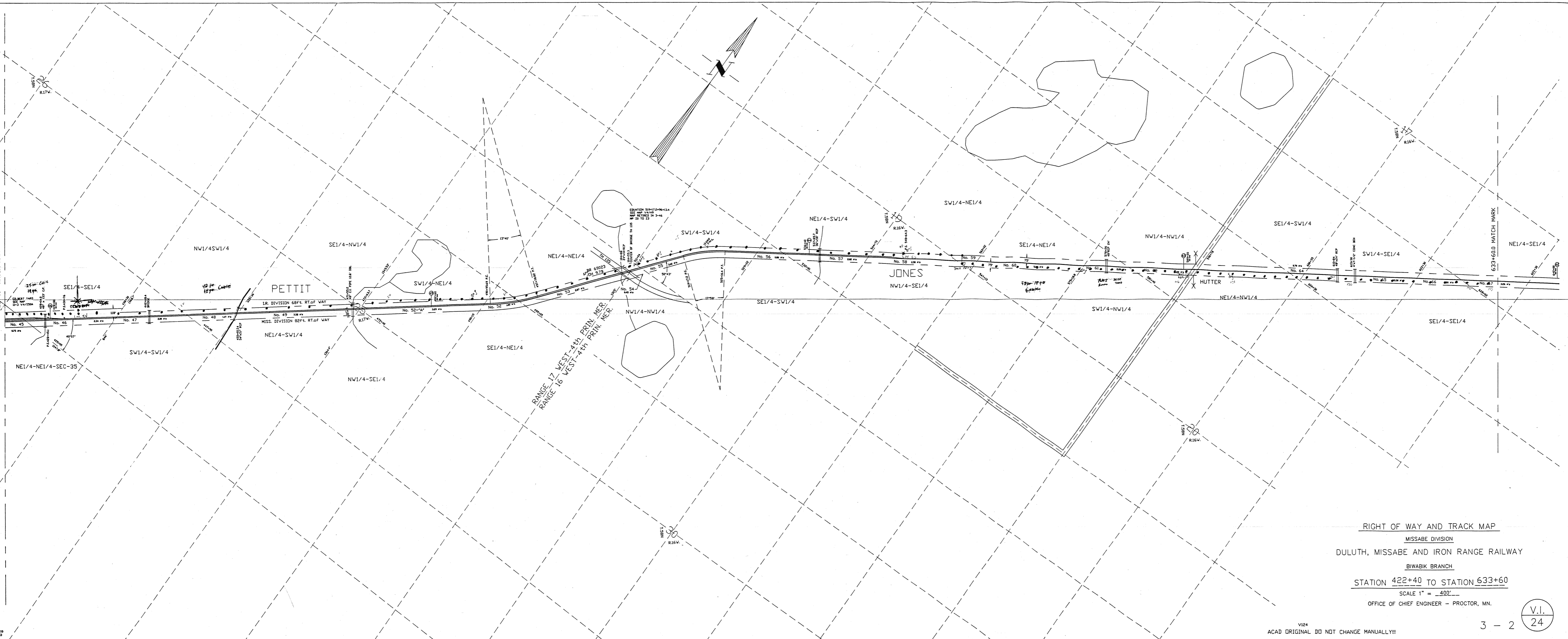
Approved June 30, 1919
W. M. Hunt
 Engineer

STATION 211+20 TO STATION 422+40
 SCALE: 1 IN. = 400 FT.

Office of Chief Engineer, DULUTH, MINN.

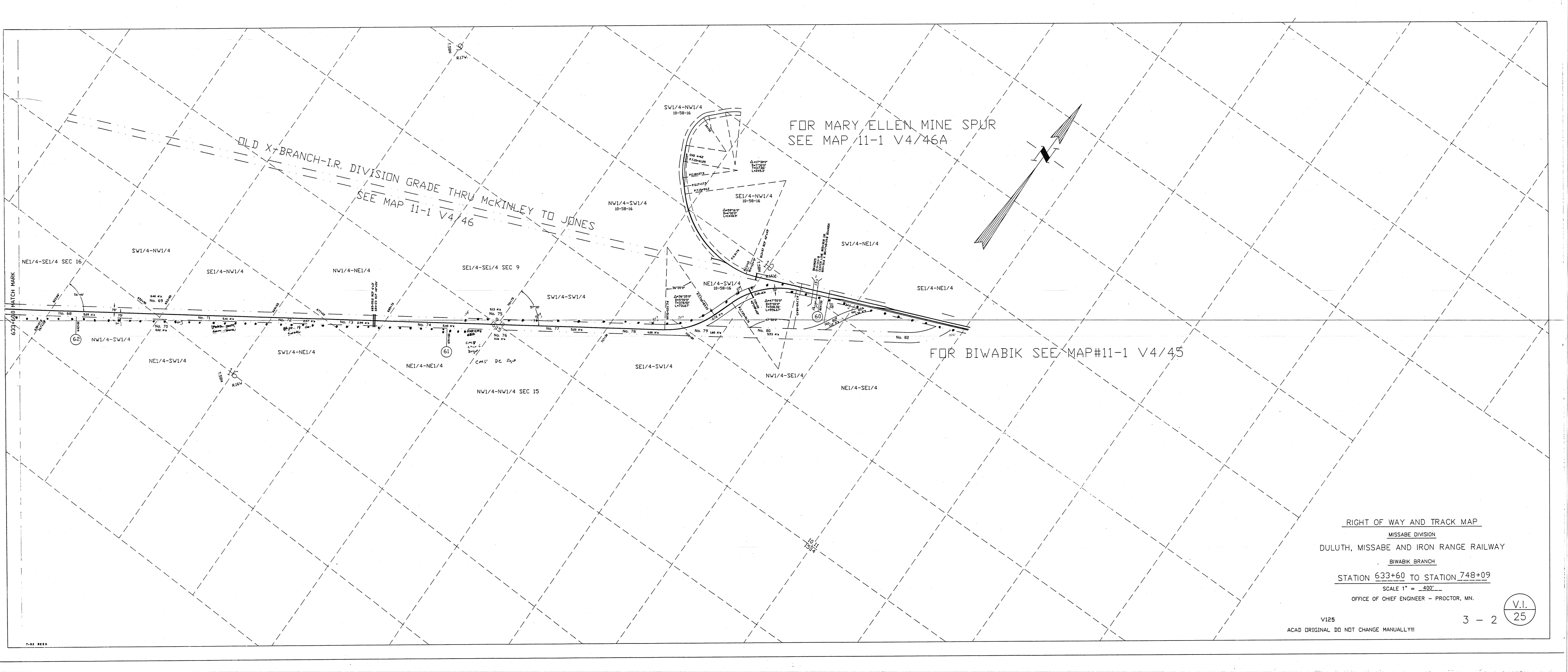
V.I.
 23

1-76 DTF
 2-23 DTF
 3-28 DTF
 4-15 DTF
 5-15 DTF
 6-15 DTF
 7-15 DTF
 8-15 DTF
 9-15 DTF
 10-15 DTF
 11-15 DTF
 12-15 DTF
 1-15 DTF
 2-15 DTF
 3-15 DTF
 4-15 DTF
 5-15 DTF
 6-15 DTF
 7-15 DTF
 8-15 DTF
 9-15 DTF
 10-15 DTF
 11-15 DTF
 12-15 DTF



RIGHT OF WAY AND TRACK MAP
 MISSABE DIVISION
 DULUTH, MISSABE AND IRON RANGE RAILWAY
 BIWABIK BRANCH
 STATION 422+40 TO STATION 633+60
 SCALE 1" = 400'
 OFFICE OF CHIEF ENGINEER - PROCTOR, MN.

V124
 ACAD ORIGINAL DO NOT CHANGE MANUALLY!!!



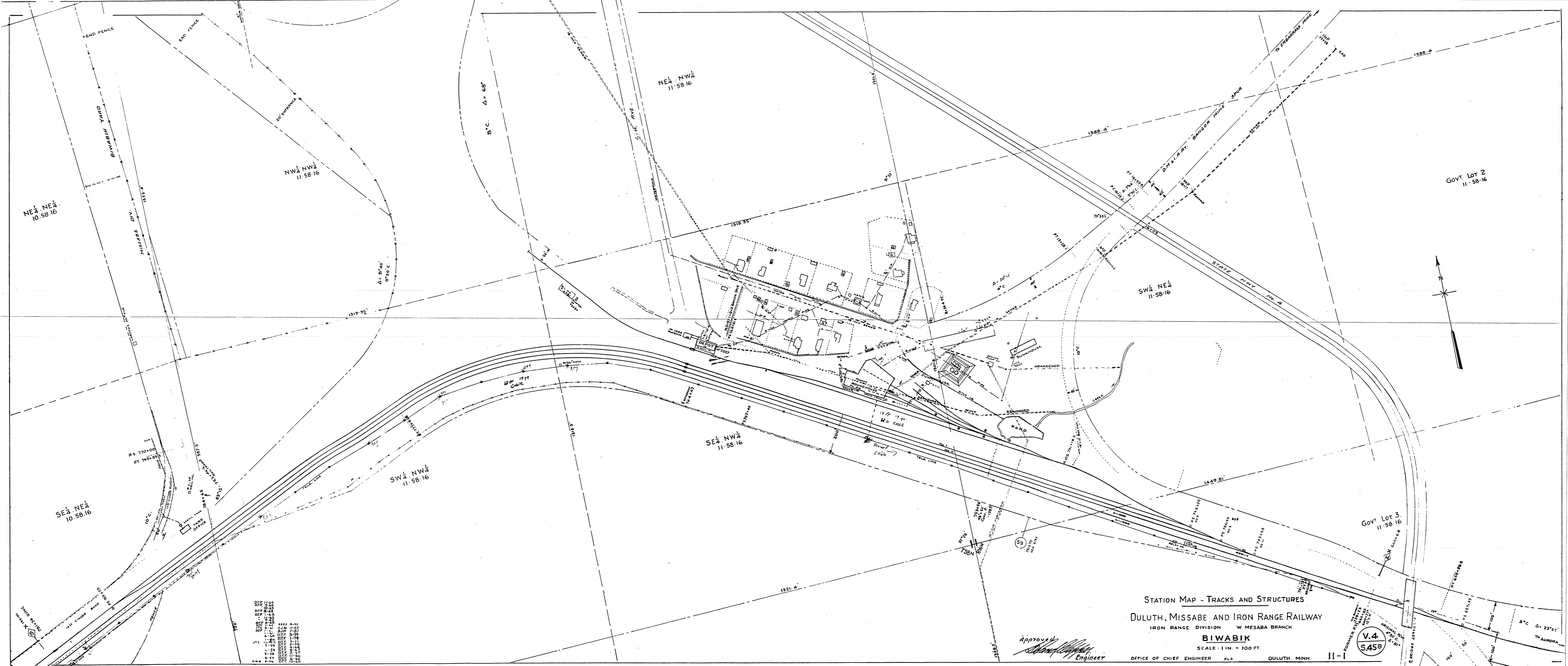
OLD X-BRANCH-I.R. DIVISION GRADE THRU MCKINLEY TO JONES
SEE MAP 11-1 V4/46

FOR MARY ELLEN MINE SPUR
SEE MAP 11-1 V4/46A

FOR BIWABIK SEE MAP#11-1 V4/45

RIGHT OF WAY AND TRACK MAP
MISSABE DIVISION
DULUTH, MISSABE AND IRON RANGE RAILWAY
BIWABIK BRANCH
STATION 633+60 TO STATION 748+09
SCALE 1" = 400'
OFFICE OF CHIEF ENGINEER - PROCTOR, MN.

V125
ACAD ORIGINAL DO NOT CHANGE MANUALLY!!!



NE 1/4 NE 1/4
10-58-16

NW 1/4 NW 1/4
11-58-16

NE 1/4 NW 1/4
11-58-16

GOVT. LOT 2
11-58-16

SW 1/4 NE 1/4
11-58-16

SE 1/4 NW 1/4
11-58-16

SW 1/4 NW 1/4
11-58-16

SE 1/4 NE 1/4
10-58-16

GOVT. LOT 3
11-58-16

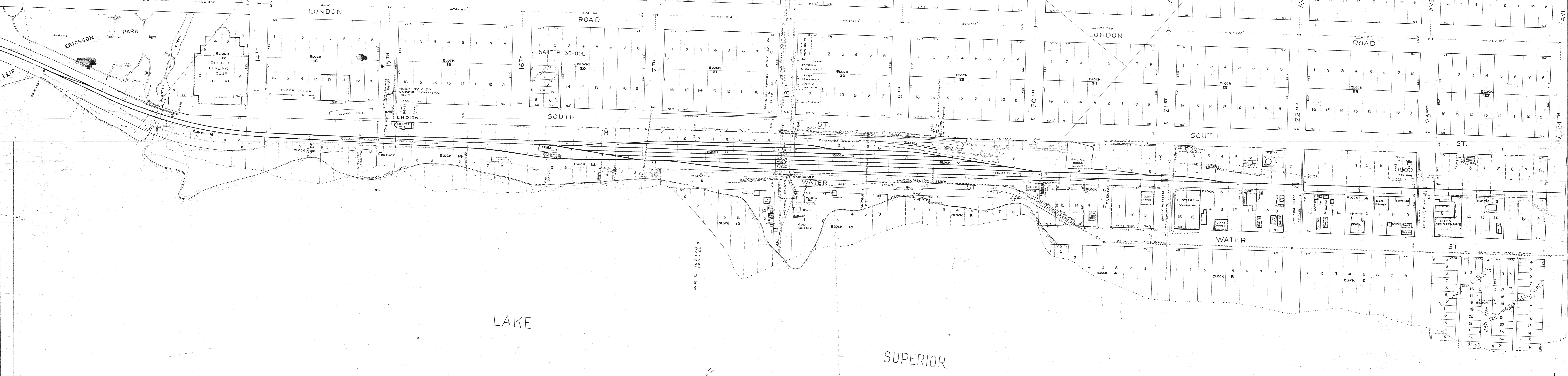
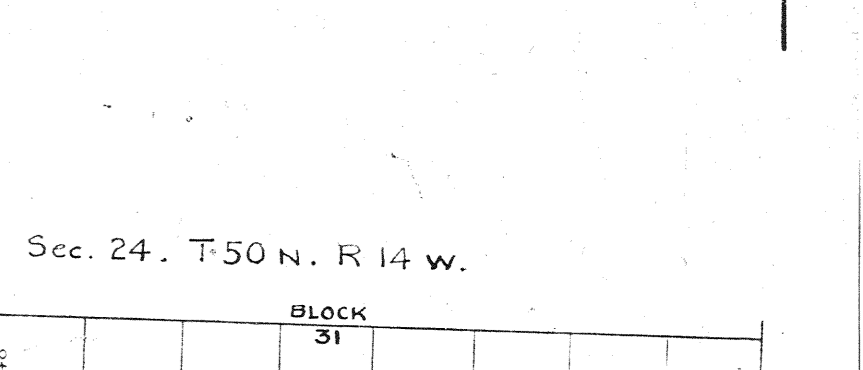
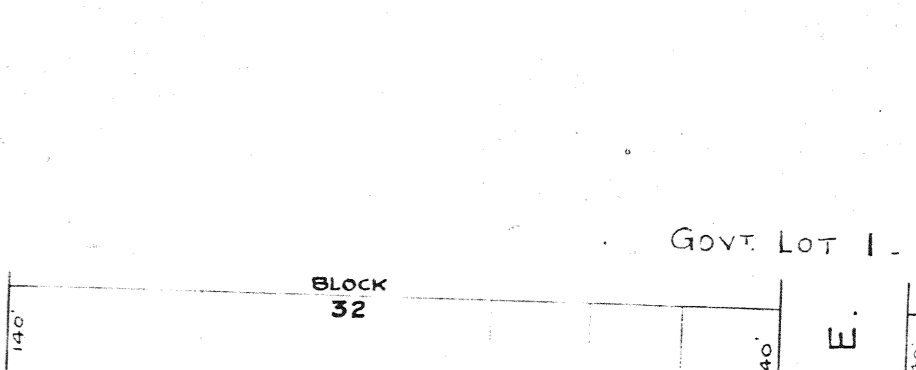
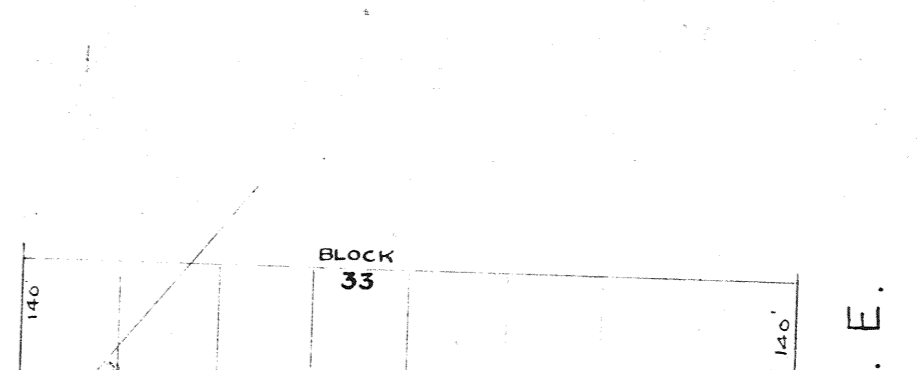
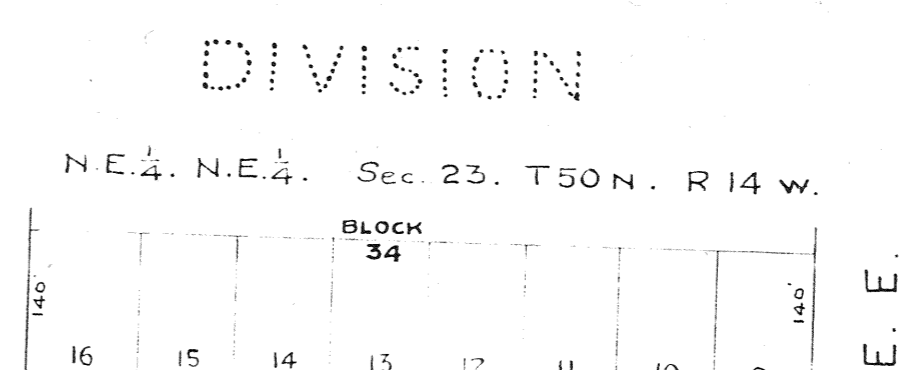
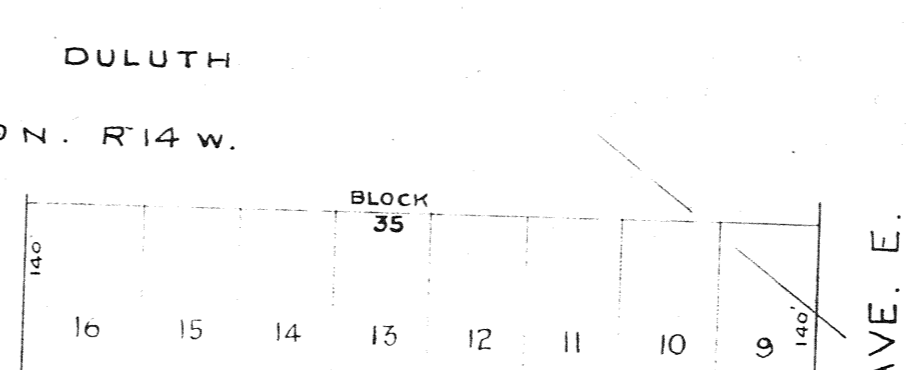
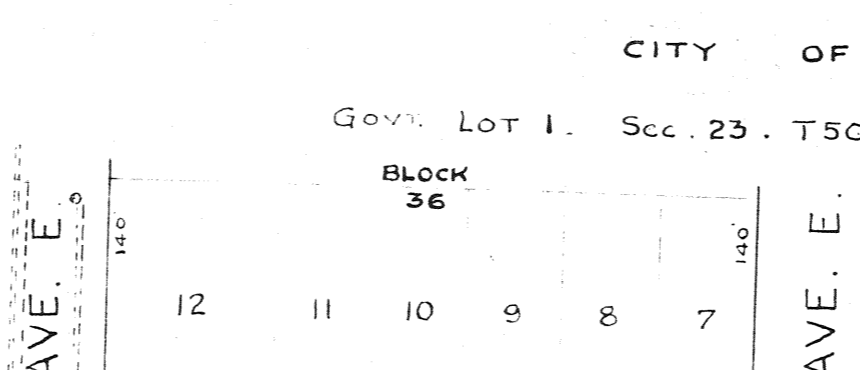
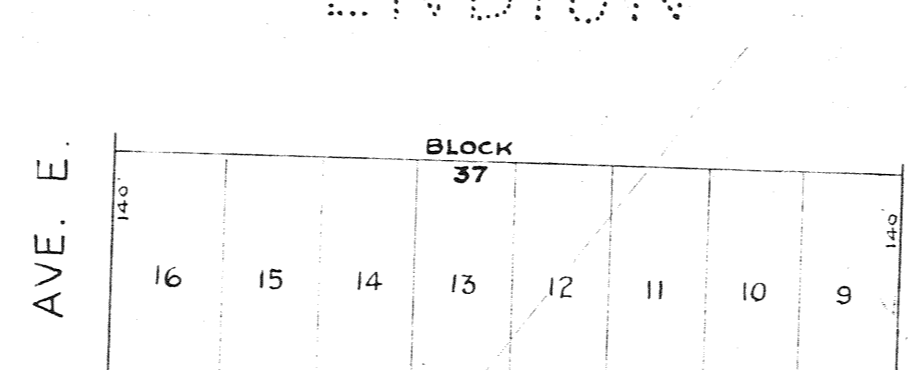
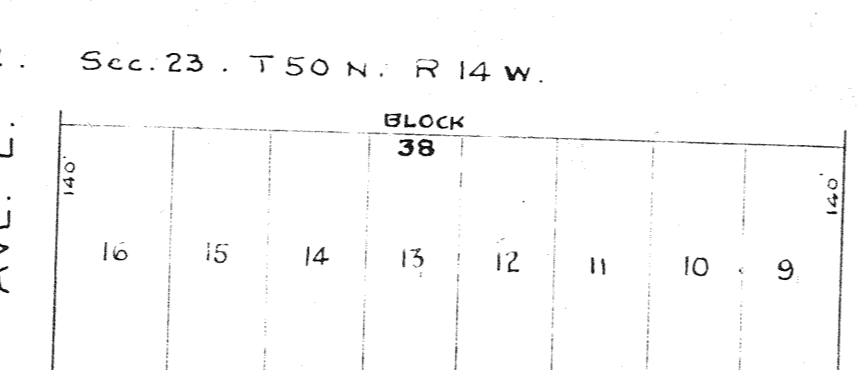
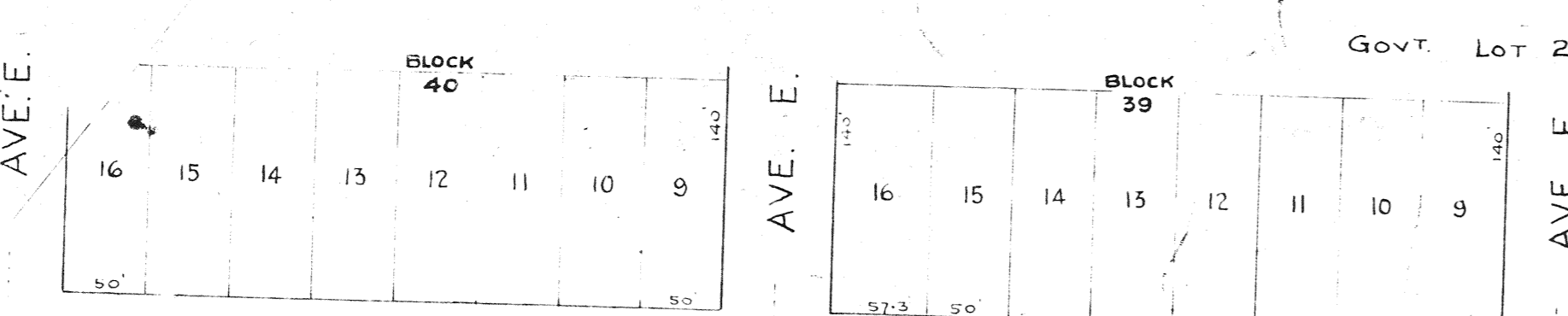
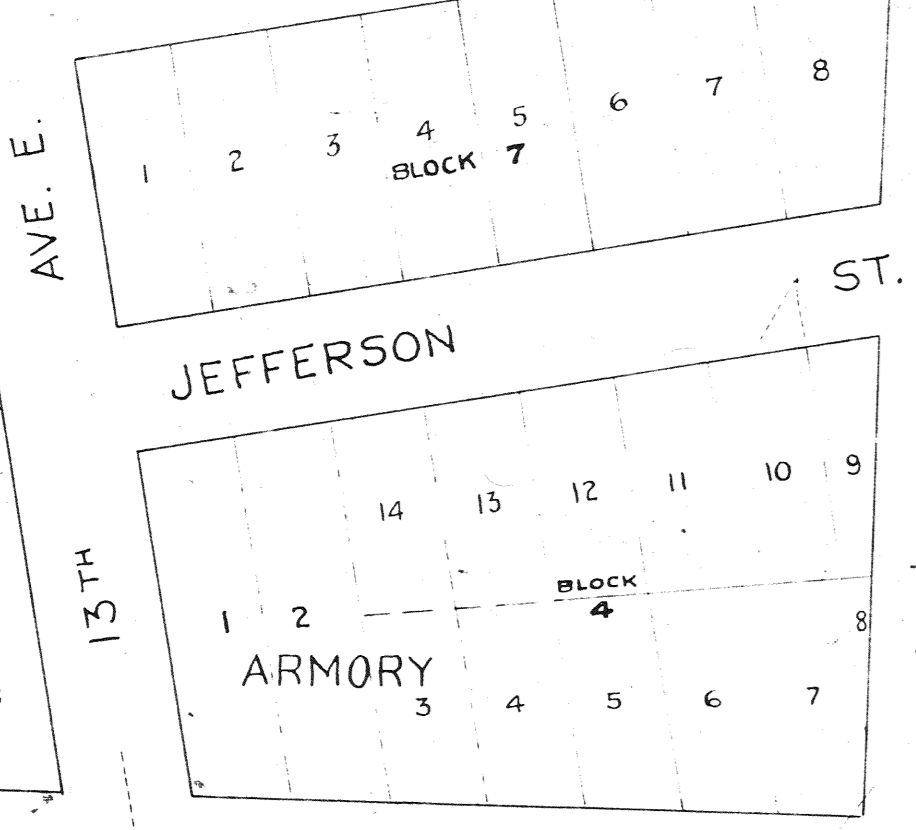
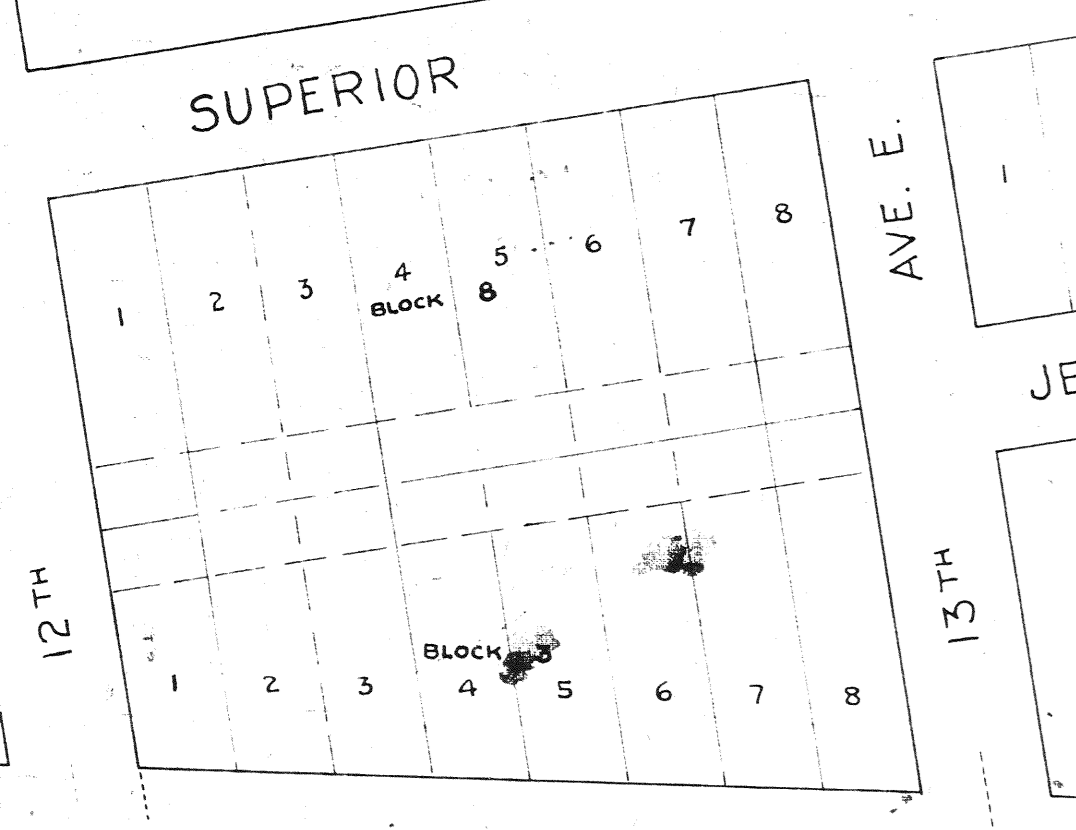
DATE	8-22
BY	W. J. B.
CHECKED	8-22
BY	W. J. B.
APPROVED	8-22
BY	W. J. B.
DATE	8-22
BY	W. J. B.
CHECKED	8-22
BY	W. J. B.
APPROVED	8-22
BY	W. J. B.
DATE	8-22
BY	W. J. B.
CHECKED	8-22
BY	W. J. B.
APPROVED	8-22
BY	W. J. B.
DATE	8-22
BY	W. J. B.
CHECKED	8-22
BY	W. J. B.
APPROVED	8-22
BY	W. J. B.

STATION MAP - TRACKS AND STRUCTURES
 DULUTH, MISSABE AND IRON RANGE RAILWAY
 IRON RANGE DIVISION W. MESABA BRANCH
BIWABIK
 SCALE: 1 IN. = 100 FT.
 OFFICE OF CHIEF ENGINEER P.L.S. DULUTH, MINN. 11-1

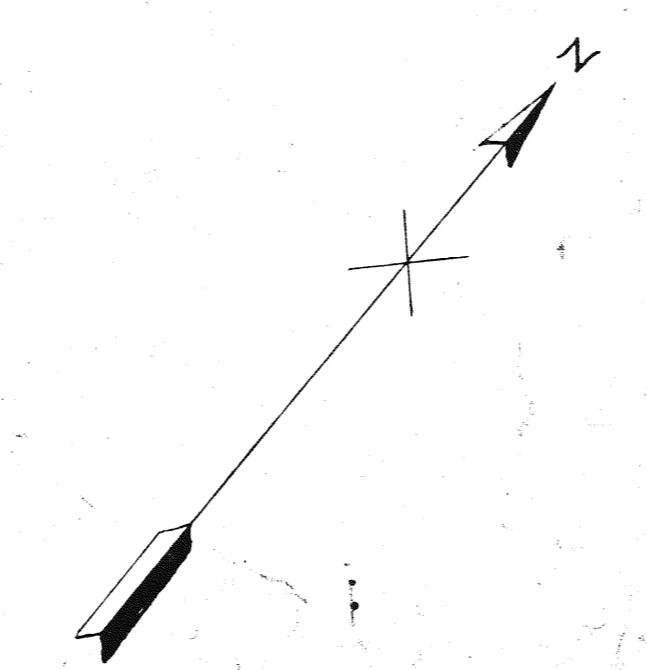
Approved
[Signature]
 Engineer

ORIGINAL FILED
 V.4
 545B

BANNING & RAY'S SUB-DIVISION
GOVT LOT 3. Sec. 23. T50N. R14W.



3-8/2/11
5-7/11 DTF
11-7/11 DTF
4-7/11 DTF
5-12/11 DTF
5-12/11 DTF
1-2/11 DTF
1-2/11 DTF
11-8/11 DTF
4-7/11 DTF
4-7/11 DTF
11-4/11 DTF
11-4/11 DTF
6-4/11 DTF
6-4/11 DTF
12-8/11 DTF
12-8/11 DTF



STATION MAP - TRACKS AND STRUCTURES
DULUTH, MISSABE AND IRON RANGE RAILWAY
IRON RANGE DIVISION
MAIN LINE - DULUTH
ENDION

Approved November, 1931.
VICE-PRESIDENT & CHIEF ENGINEER

STATION TO STATION
SCALE: 1 IN. = 100 FT.
SURVEY BY H. F. GRAVES, P.L.S.
OFFICE OF CHIEF ENGINEER, DULUTH, MINN.

V.4
SIBI



DATE	BY	REVISION
3-79
1-79
7-71
4-70
2-69
1-68
11-67
10-67
8-67
7-67
6-67
5-67
4-67
3-67
2-67
1-67
12-66
11-66
10-66
9-66
8-66
7-66
6-66
5-66
4-66
3-66
2-66
1-66
12-65
11-65
10-65
9-65
8-65
7-65
6-65
5-65
4-65
3-65
2-65
1-65
12-64
11-64
10-64
9-64
8-64
7-64
6-64
5-64
4-64
3-64
2-64
1-64
12-63
11-63
10-63
9-63
8-63
7-63
6-63
5-63
4-63
3-63
2-63
1-63
12-62
11-62
10-62
9-62
8-62
7-62
6-62
5-62
4-62
3-62
2-62
1-62
12-61
11-61
10-61
9-61
8-61
7-61
6-61
5-61
4-61
3-61
2-61
1-61
12-60
11-60
10-60
9-60
8-60
7-60
6-60
5-60
4-60
3-60
2-60
1-60
12-59
11-59
10-59
9-59
8-59
7-59
6-59
5-59
4-59
3-59
2-59
1-59
12-58
11-58
10-58
9-58
8-58
7-58
6-58
5-58
4-58
3-58
2-58
1-58

STATION MAP - TRACKS AND STRUCTURES
DULUTH, MISSABE AND IRON RANGE RAILWAY
IRON RANGE DIVISION W. MESABA BRANCH
BIWABIK
SCALE: 1 IN. = 100 FT.
OFFICE OF CHIEF ENGINEER
DULUTH, MINN.

Approved
[Signature]
Engineer

V.4
S45B

For Continuation of Map - See Lower L.H. Cor.

NOTE: RELAY 900' SBM AND 600' NBM WITH 132# RAIL THRU SWITCH AREA.

Construct 132# - #16 T.O. Power Operated Crossover, 2-Switch Heaters.

Relay Virginia Branch & Replace #11 T.O. with 132# - #16 Turnout. Relay Southerly 600' at Va. Br. with 132# Rail.

Relocate N.E.M. Switch from Sta 3464+66.5 To Sta 3468+24.5. Better Switch from 132# #11 To 132# #16. Transfer 358' from Trk #10 To N.B.M. and Better from 80# To 132#. 1-Switch Heater.

Relocate T.O. #10 from Sta. 3461+63.2 to Sta 3458+05. Place 132# - #9 T.O.

Proposed Track Revisions
June 23, 1916
DET

STATION MAP-TRACKS AND STRUCTURES

MISSABE DIVISION
DULUTH, MISSABE AND IRON RANGE RAILWAY
MAIN LINE
WOLF

STATION 3448+00 TO STATION 3499+00
SCALE: 1 IN. = 100 FT.

Approved June 30, 1919.
W.H. [Signature] Engineer

V.I.
5209

