

14

CARROUSEL TYPE CL

GENERAL ARRANGEMENT

A. & C. DEER, D. M. & N. R. Y.

ST. LOUIS, MISSOURI, 4-2-11

10-10-11

7-11-15

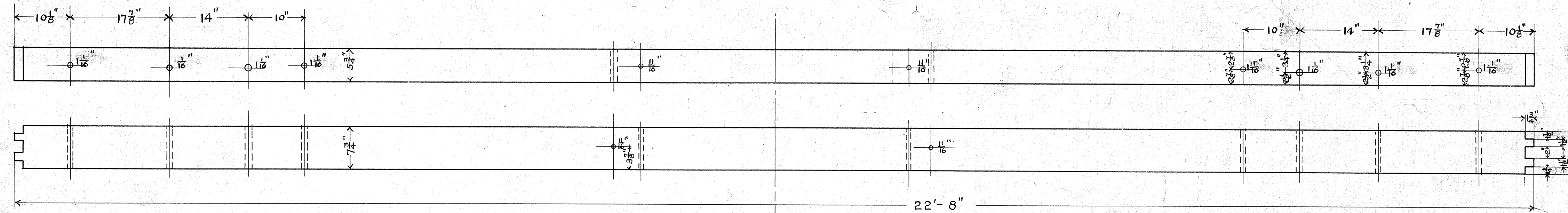
DATE

REV.

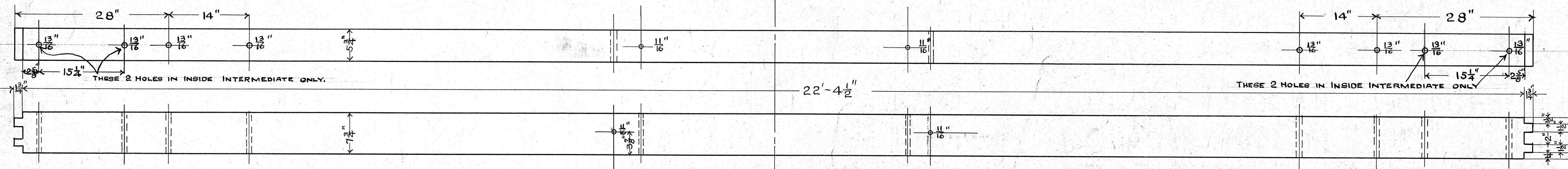
SUBJECT

200

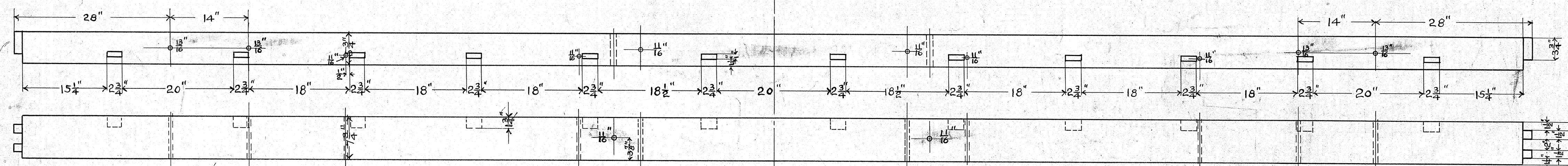
Reason 'A' Hood & Running Board altered to meet safety req. Nov. 12-8-11



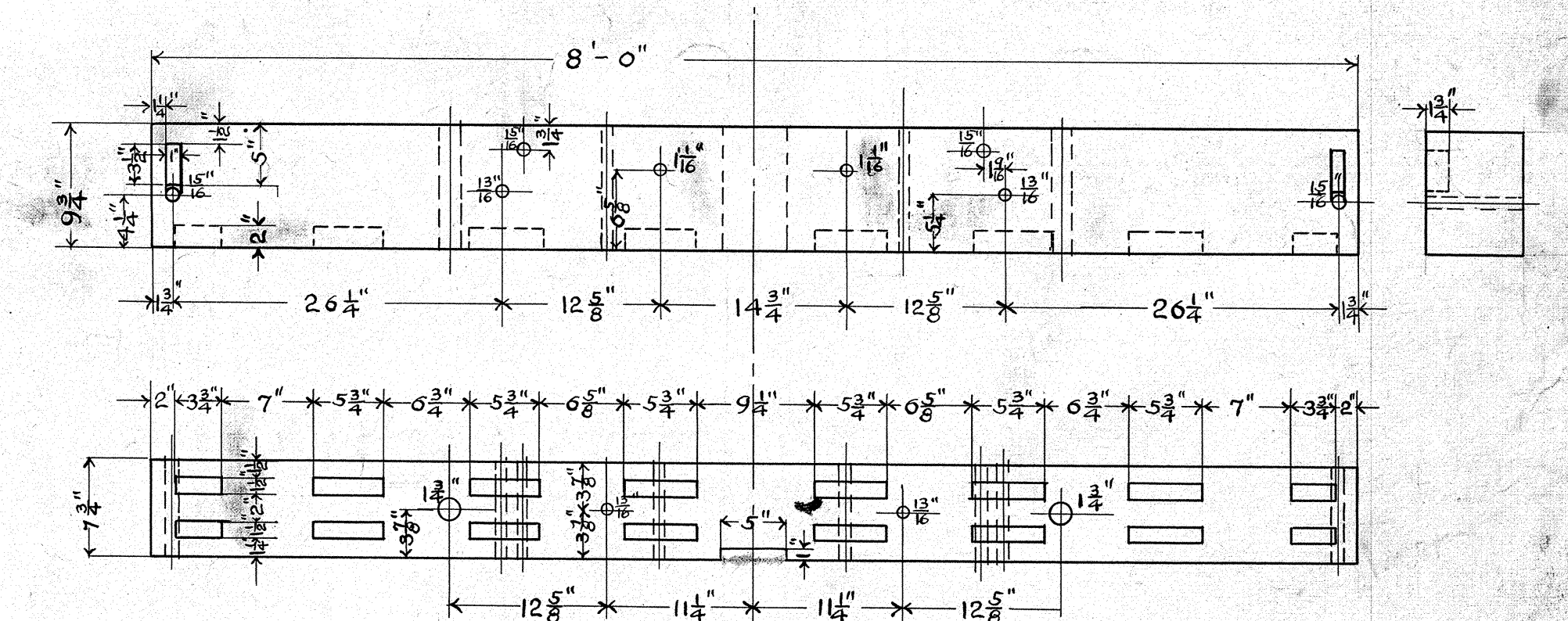
2 CENTER SILLS



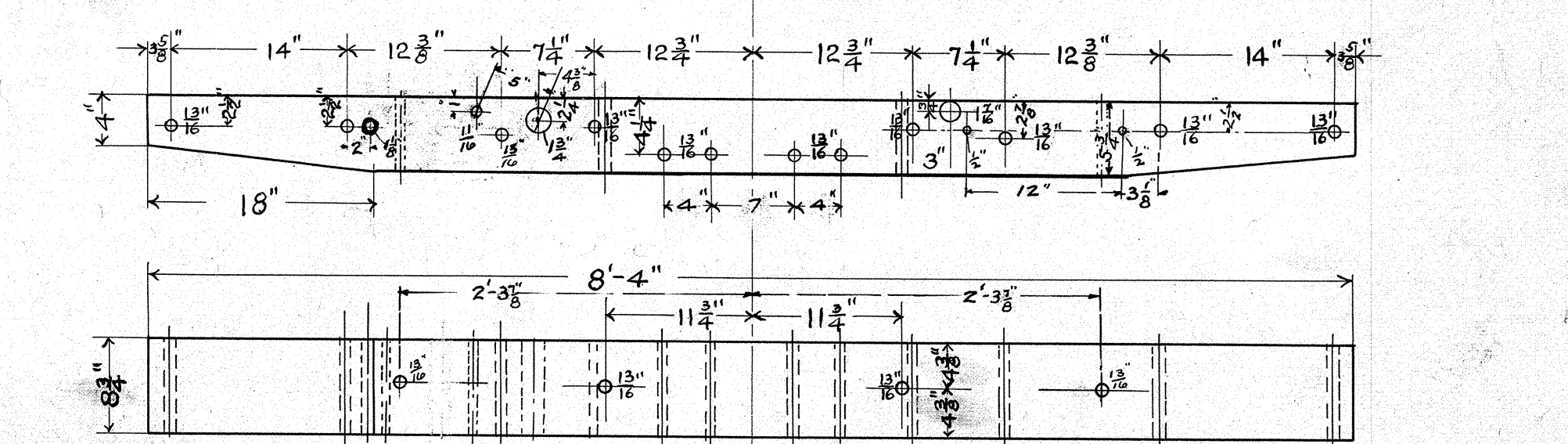
4 INTERMEDIATE SILLS



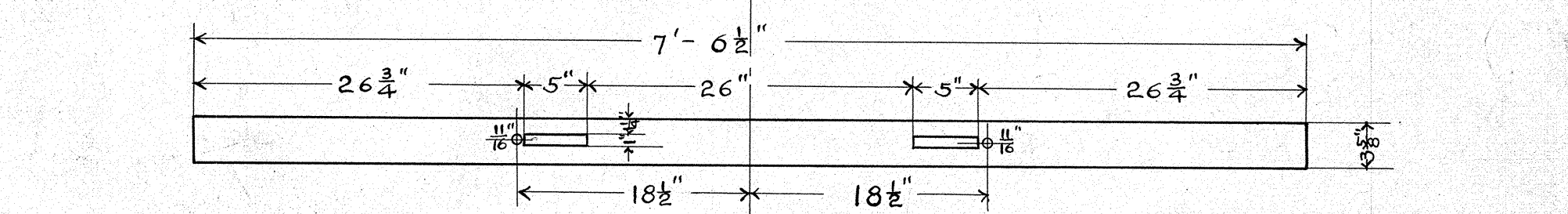
2 SIDE SILLS



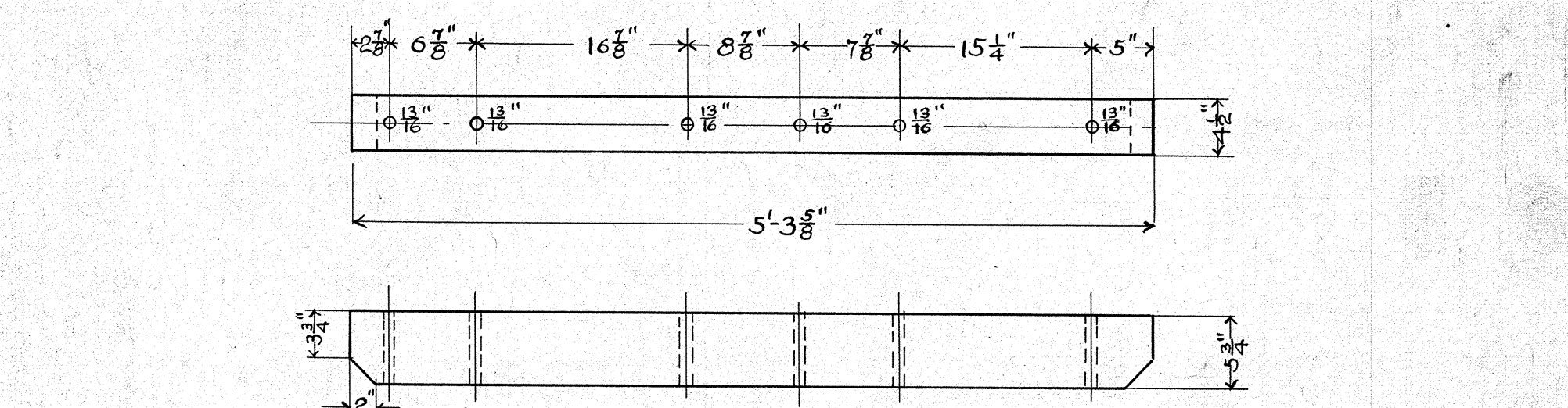
2 BODY END SILLS



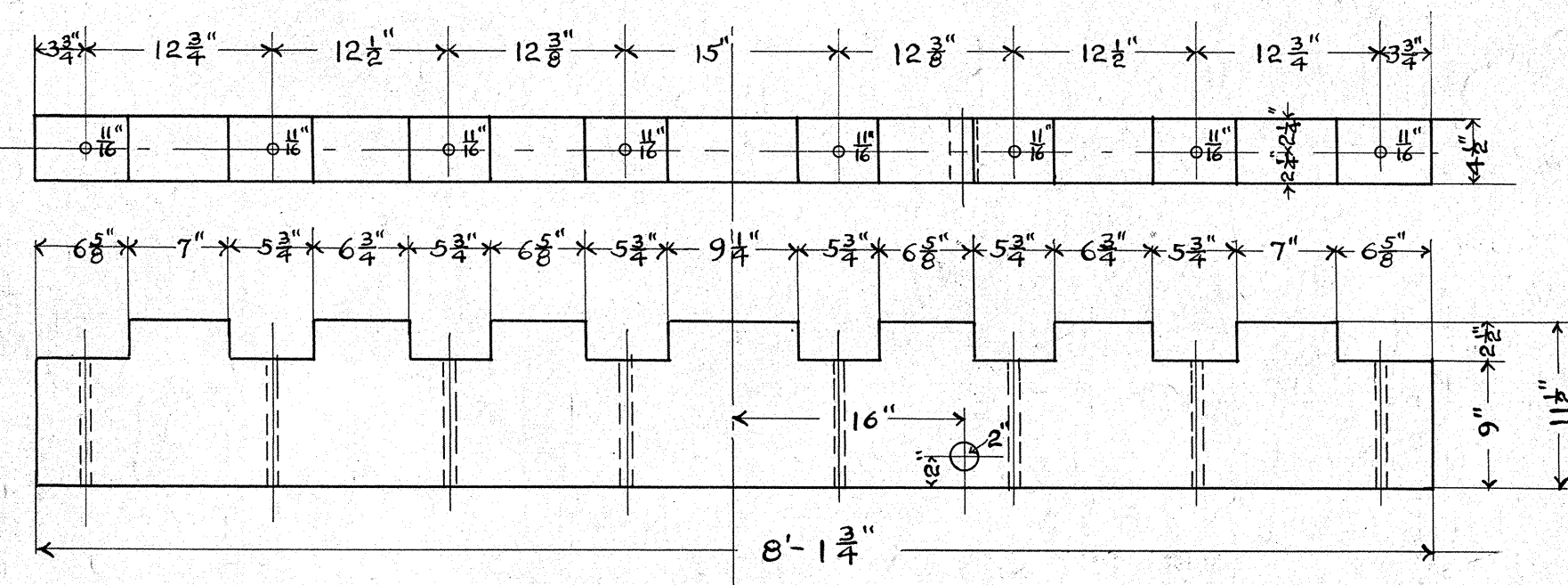
2 PLATFORM END SILLS



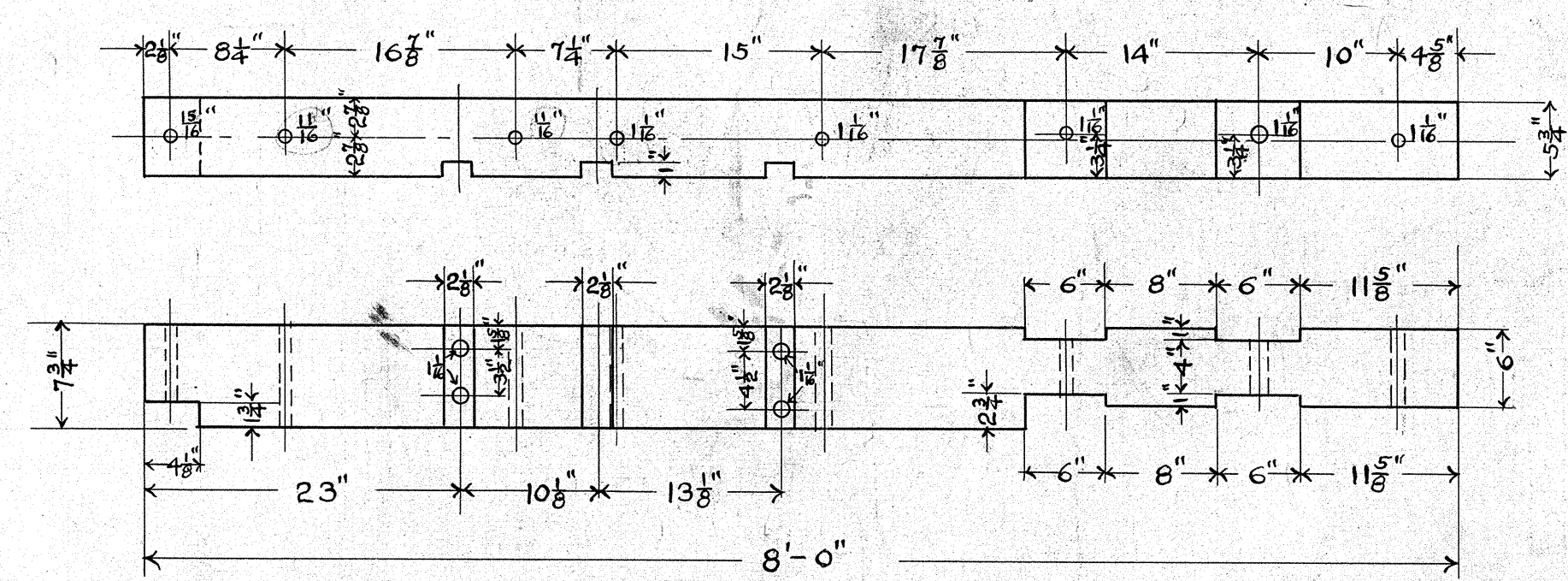
2 THRESHOLD SILLS



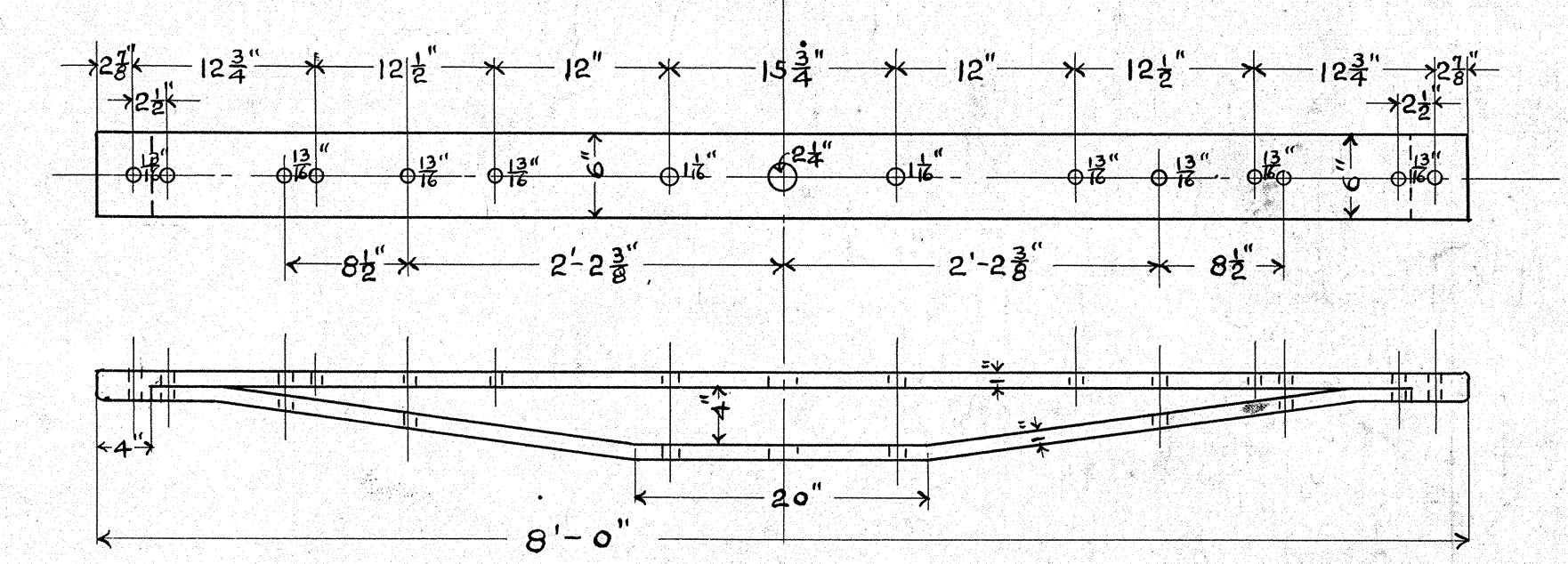
4 PLATFORM SILLS



2 NEEDLE BEAMS

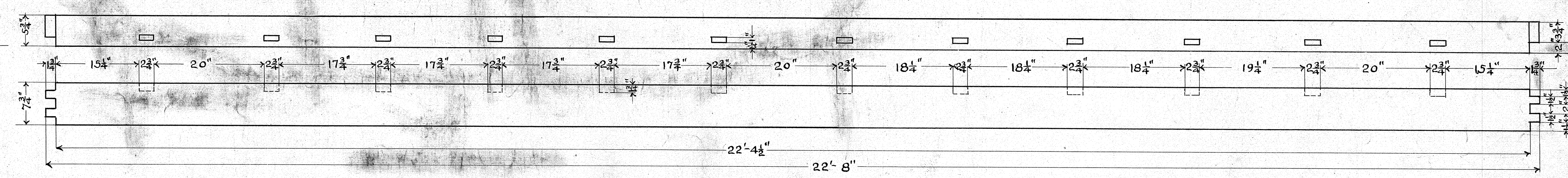


4 DRAFT SILLS
2 RIGHT, 2 LEFT



4 BODY BOLSTERS

CARNEGIE SPECIAL WELDING STEEL



CABOOSE G1
TYPE CLA

UNDERFRAME DETAILS

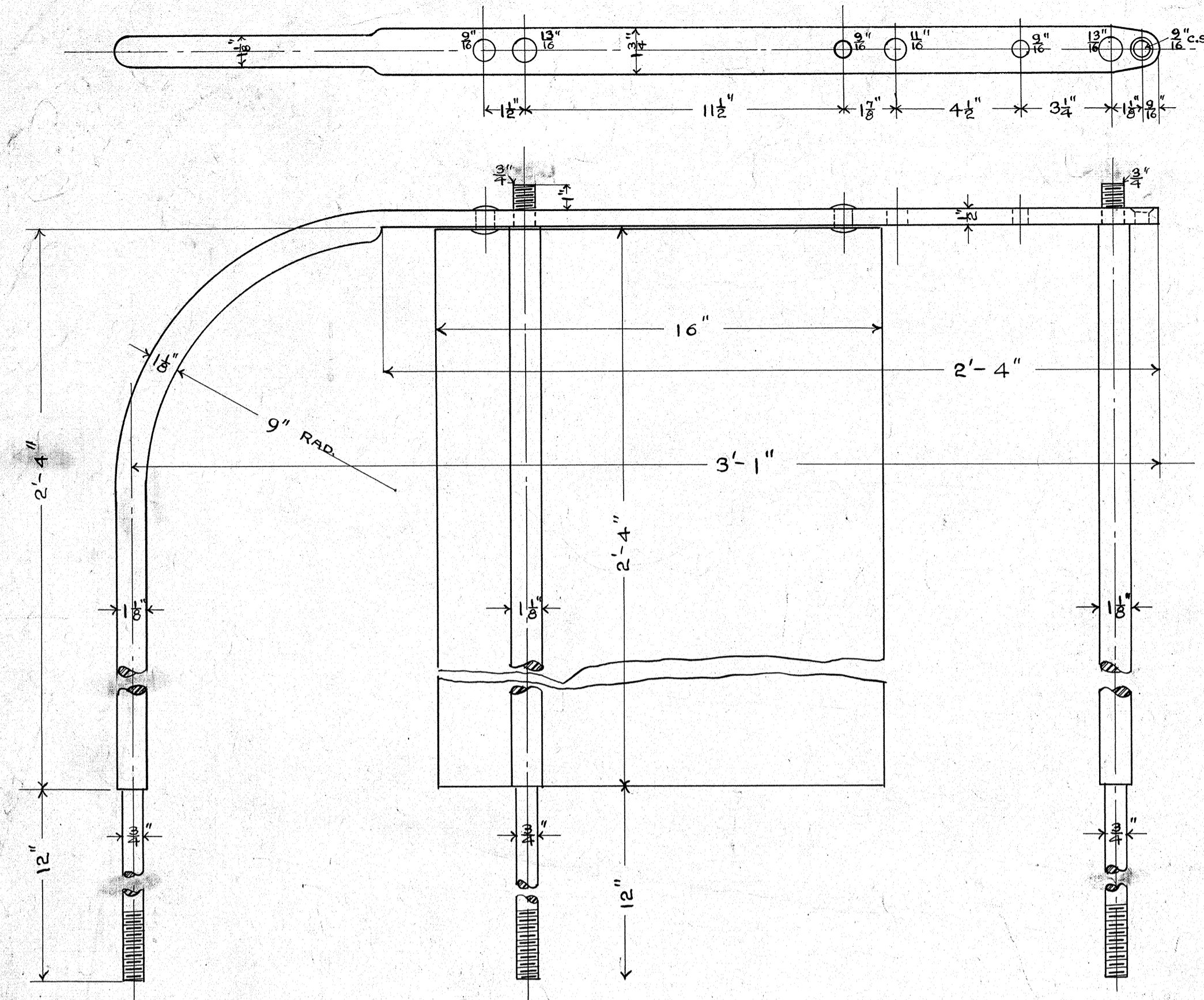
M. P. & C. Dept. D. M. & N. Ry. Co.
Proctor, Minn. 4-29-1911

APPROVED
TRACING

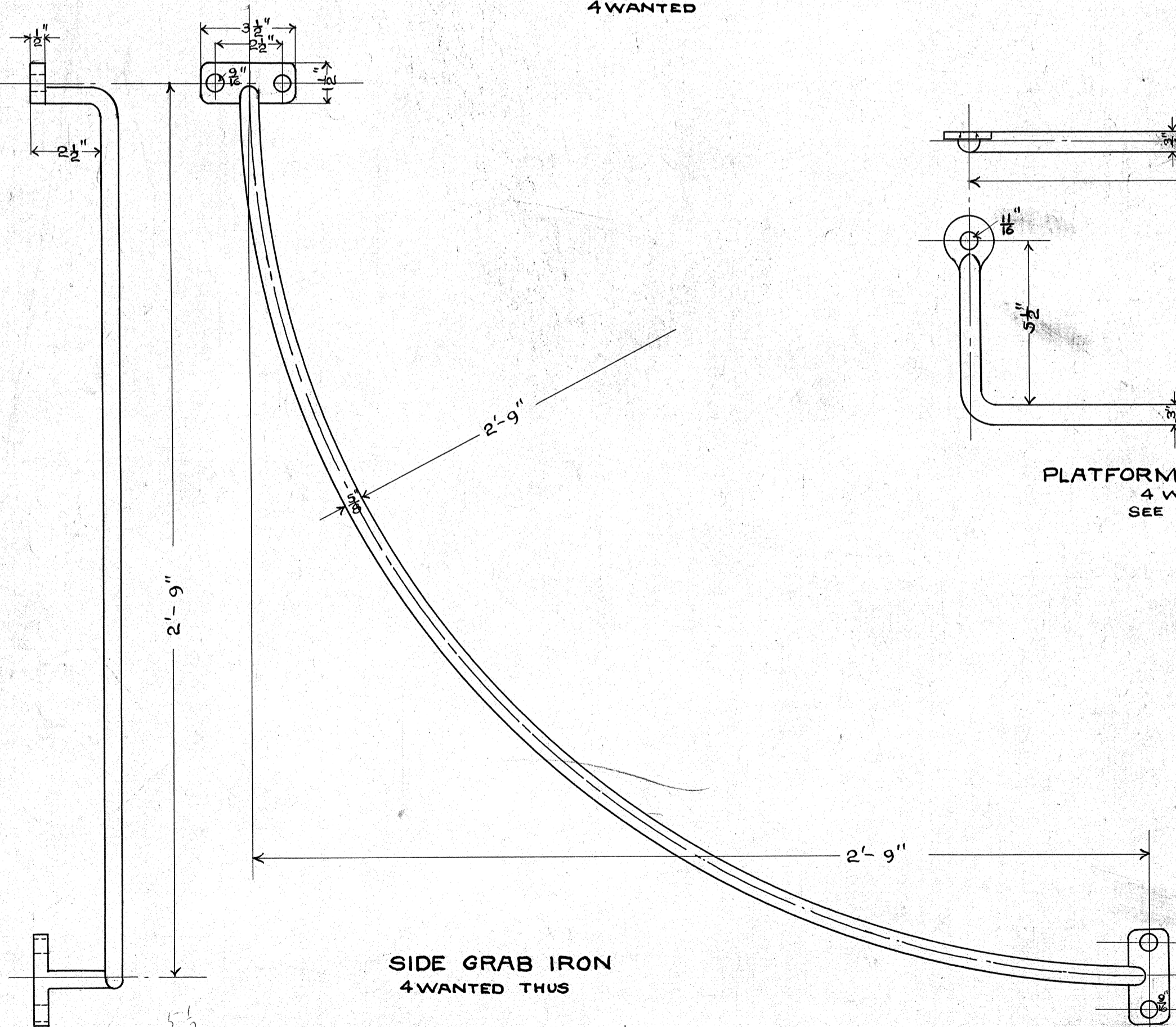
W. L. Seddon
Supt. M. P. & C.

200

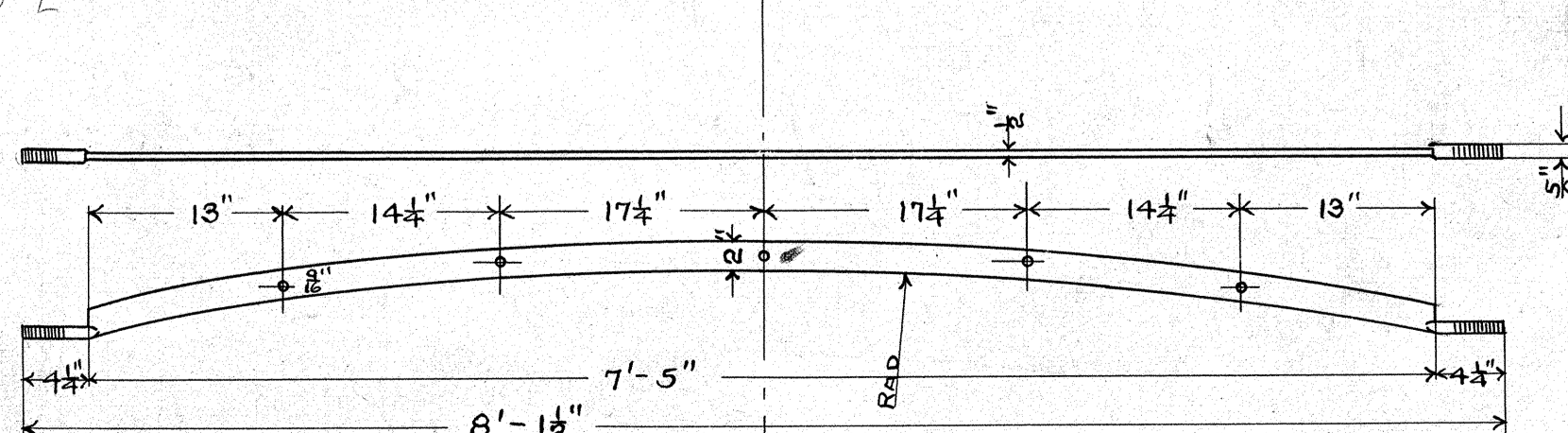
DIMENSIONS ADDED TO END SILL 7-10-34



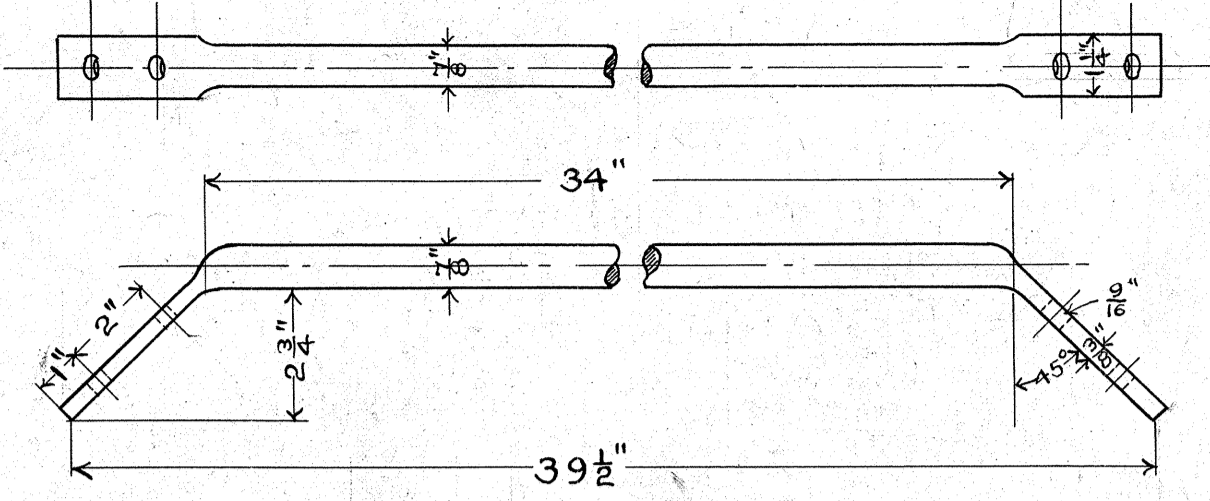
PLATFORM RAIL
4 WANTED



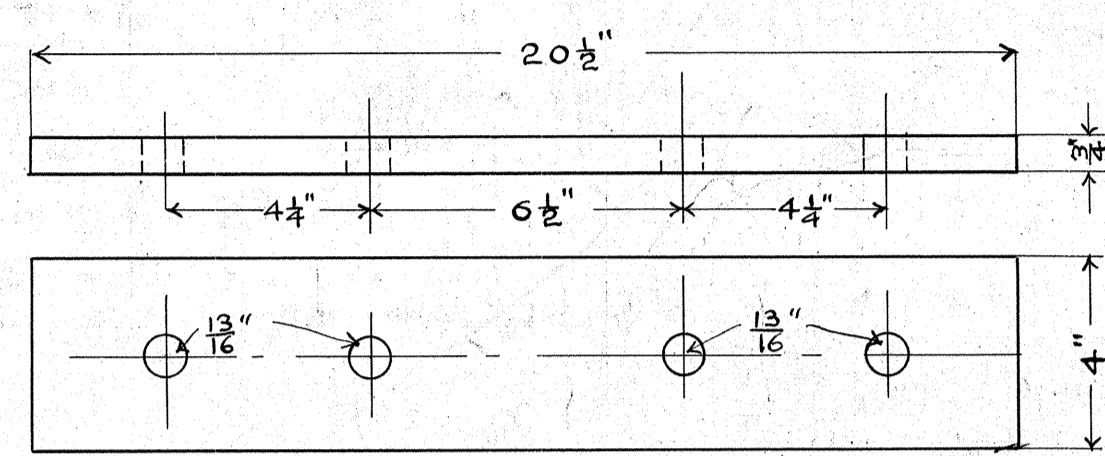
SIDE GRAB IRON
4 WANTED THUS



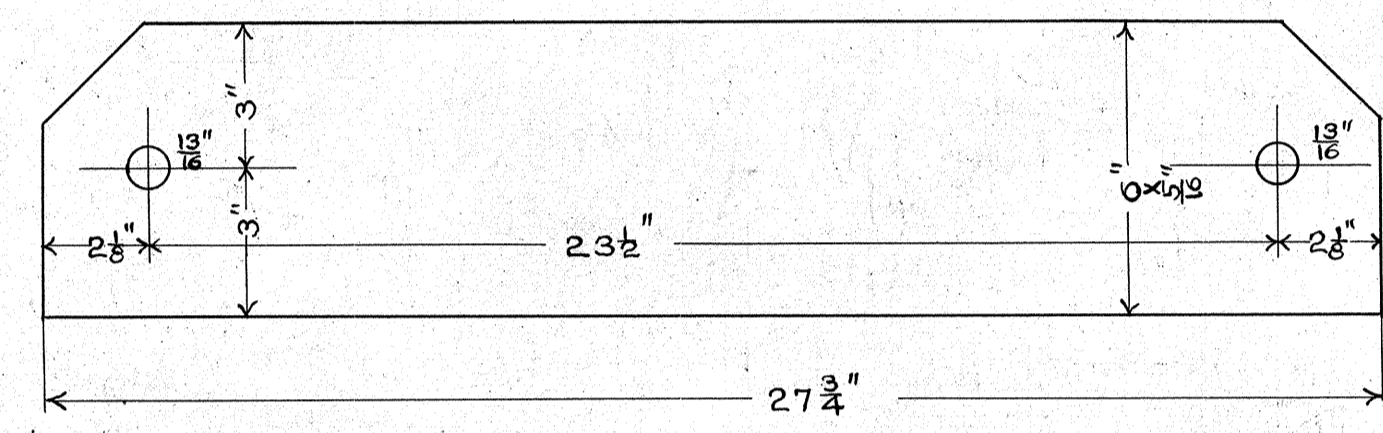
MAIN ROOF CARLINE STIFFENER
3 WANTED THUS



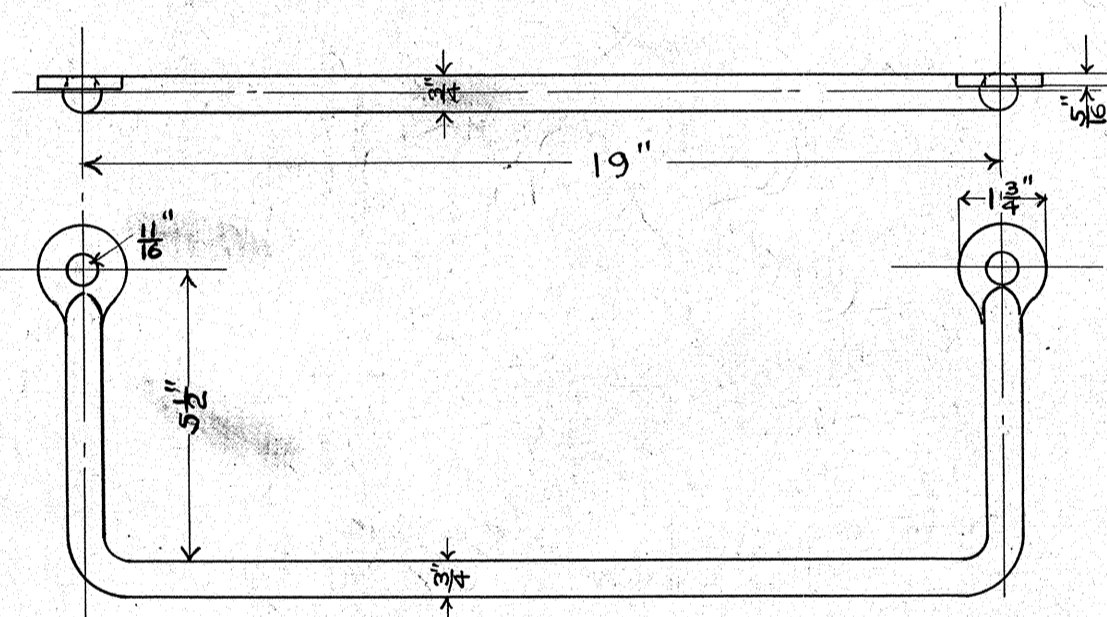
CUPOLA BRACE
4 WANTED THUS



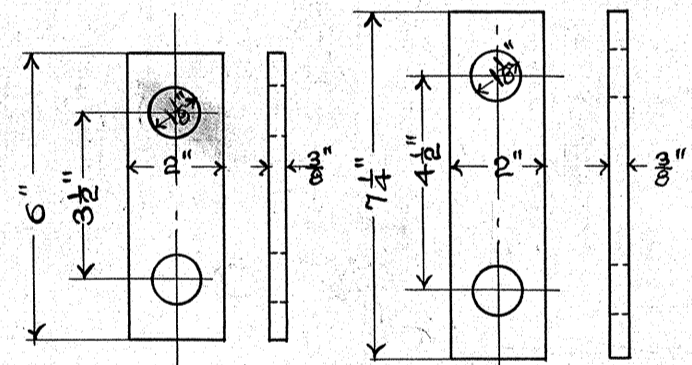
CARRY IRON
2 WANTED THUS



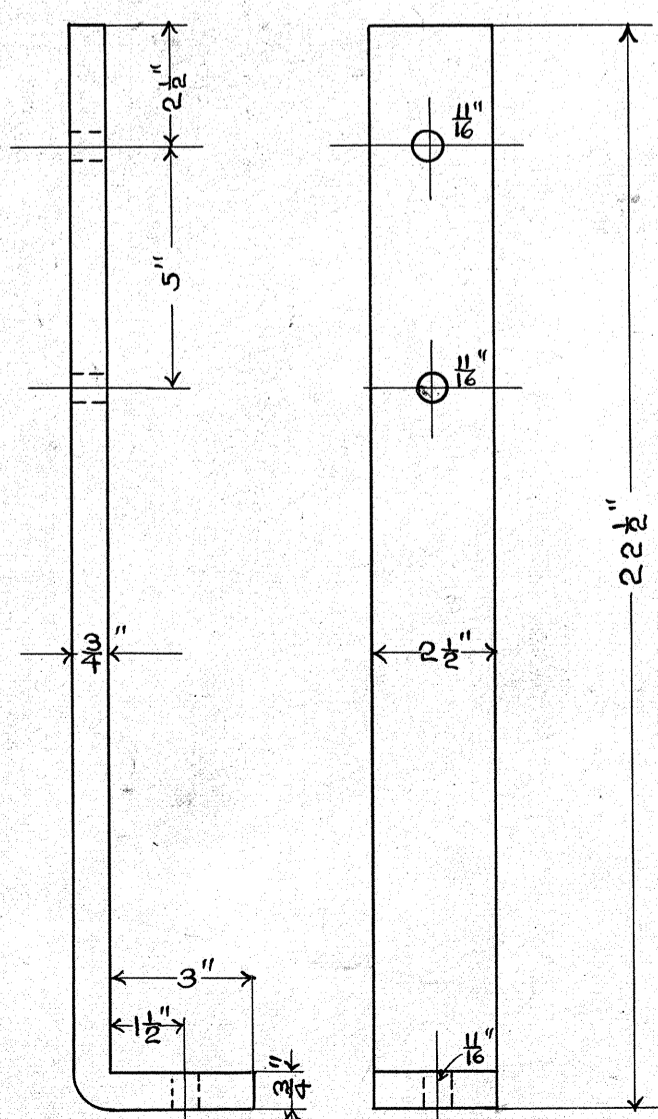
BUFFER PLATE
2 WANTED THUS



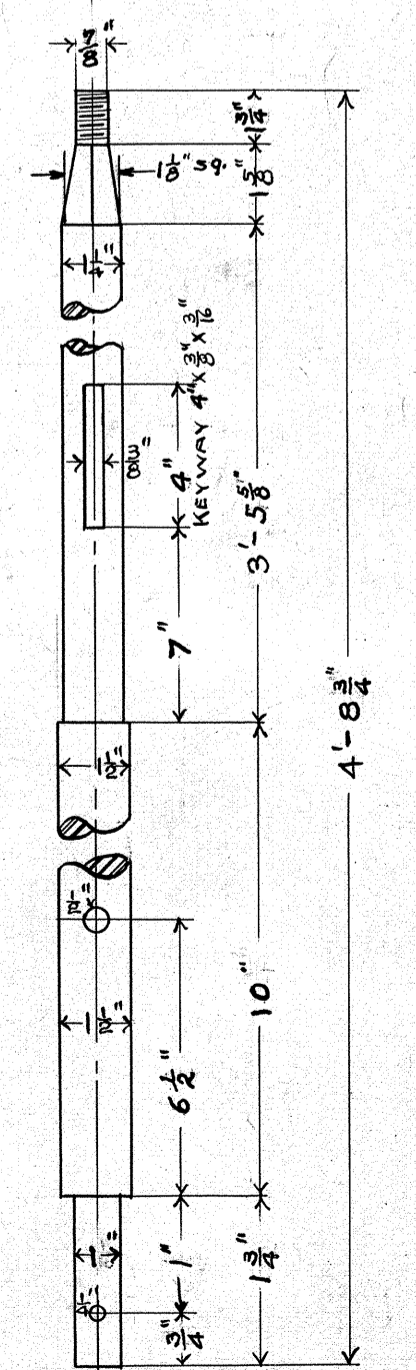
PLATFORM END SILL GRAB IRON
4 WANTED THUS
SEE TR. 1598



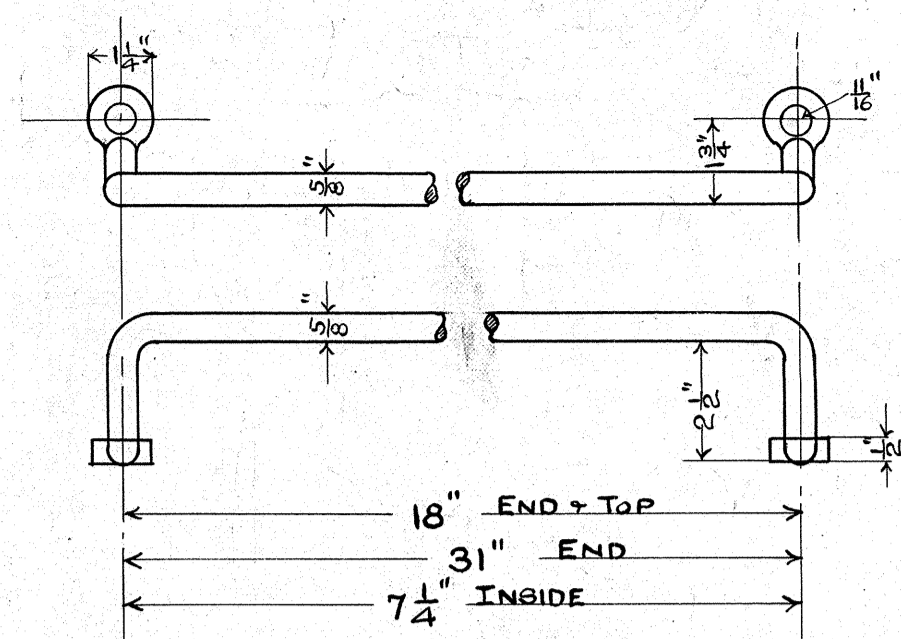
LUG STRAPS
4 THUS 4 THUS



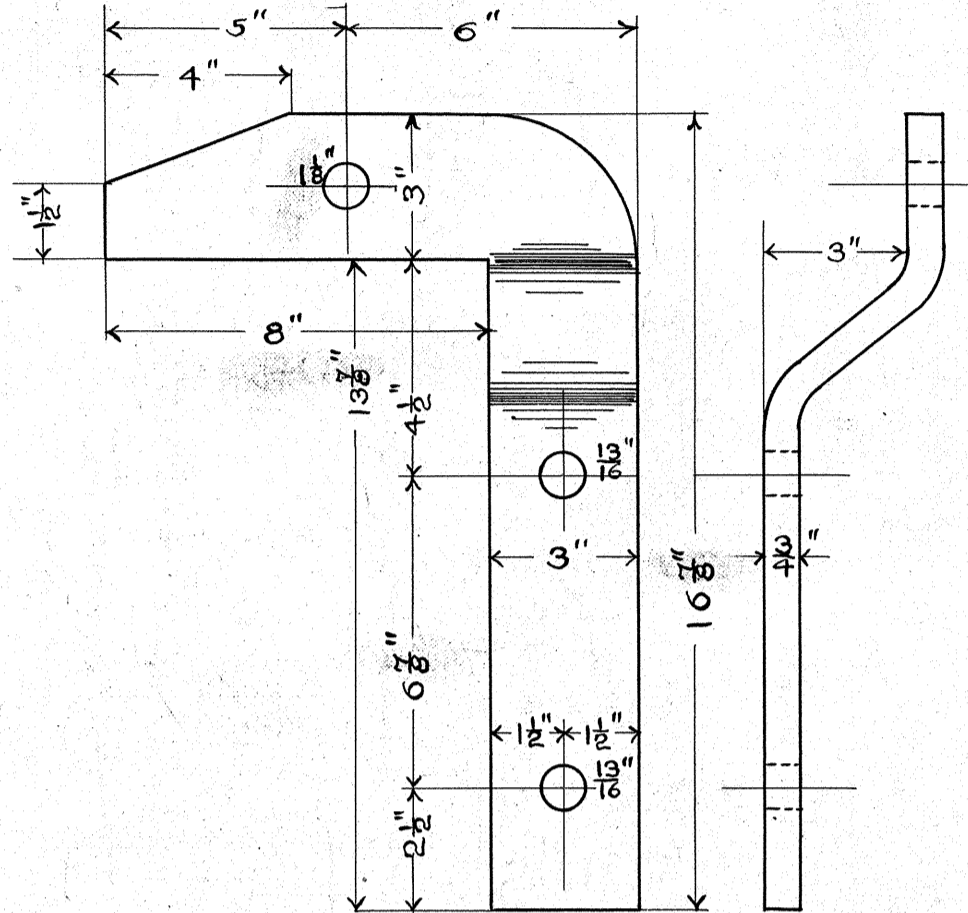
SUPPLY BOX HANGER
8 WANTED THUS



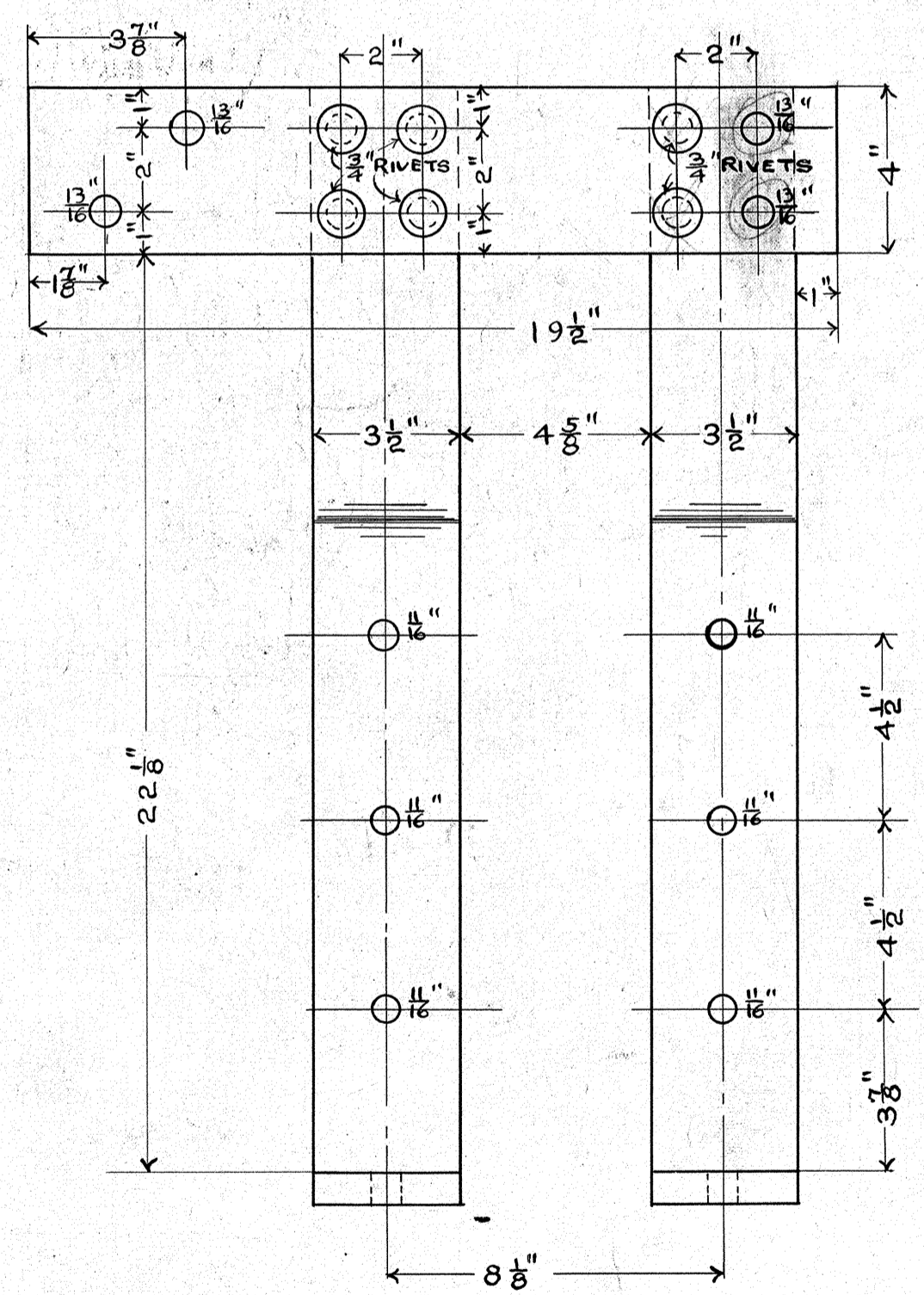
BRAKE SHAFT
2 WANTED THUS



GRAB IRONS

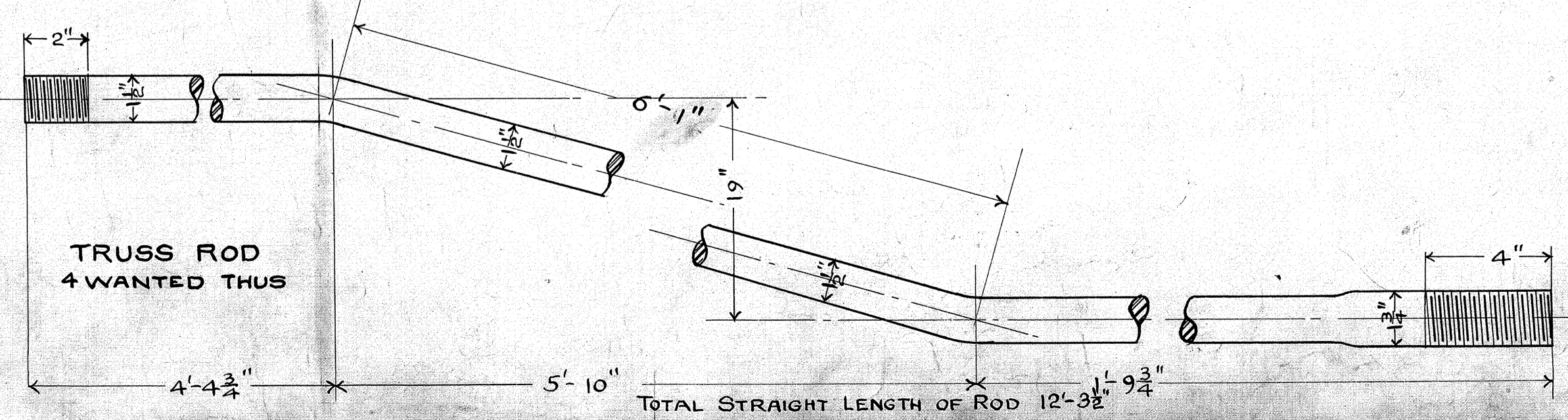


BRAKE SHAFT BRACKET
2 WANTED THUS



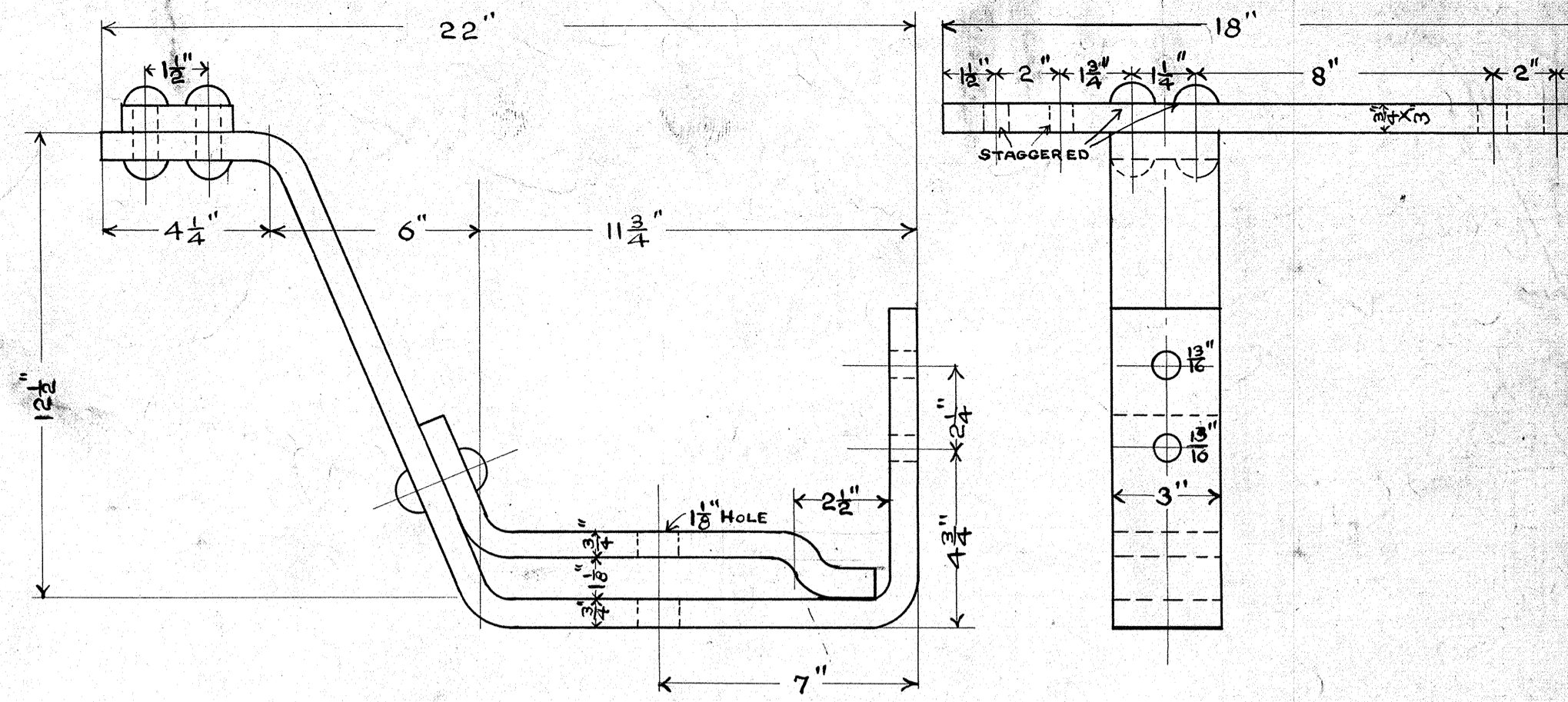
BRAKE CYLINDER BRACKET
1 WANTED THUS

GOOD FOR NOS 33 & 47. SEE TR. N° 2056 1/2 FOR REMAINDER



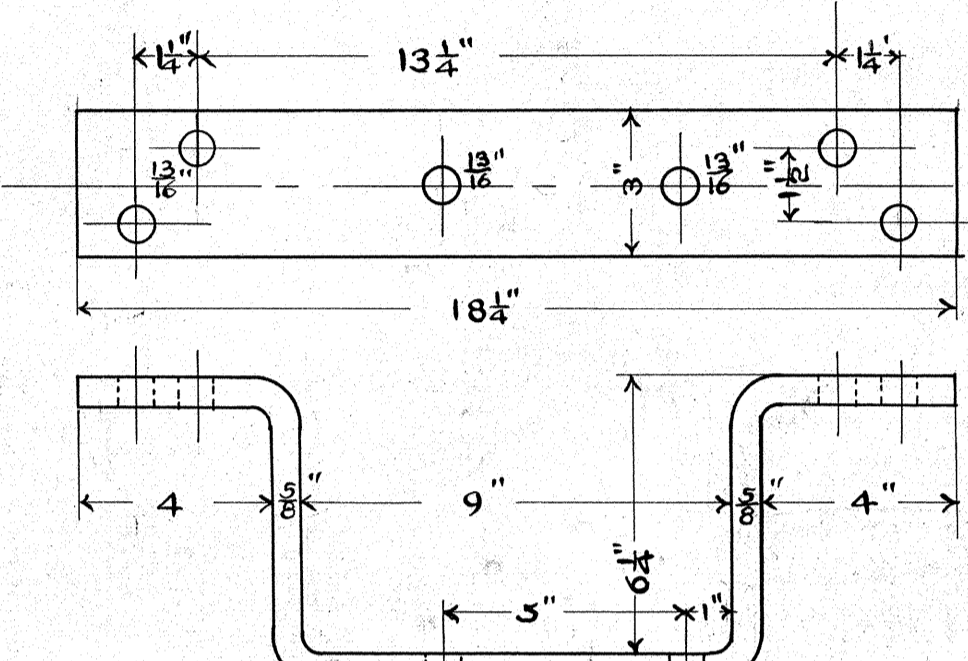
TRUSS ROD
4 WANTED THUS

TOTAL STRAIGHT LENGTH OF ROD 12'-3 3/8"



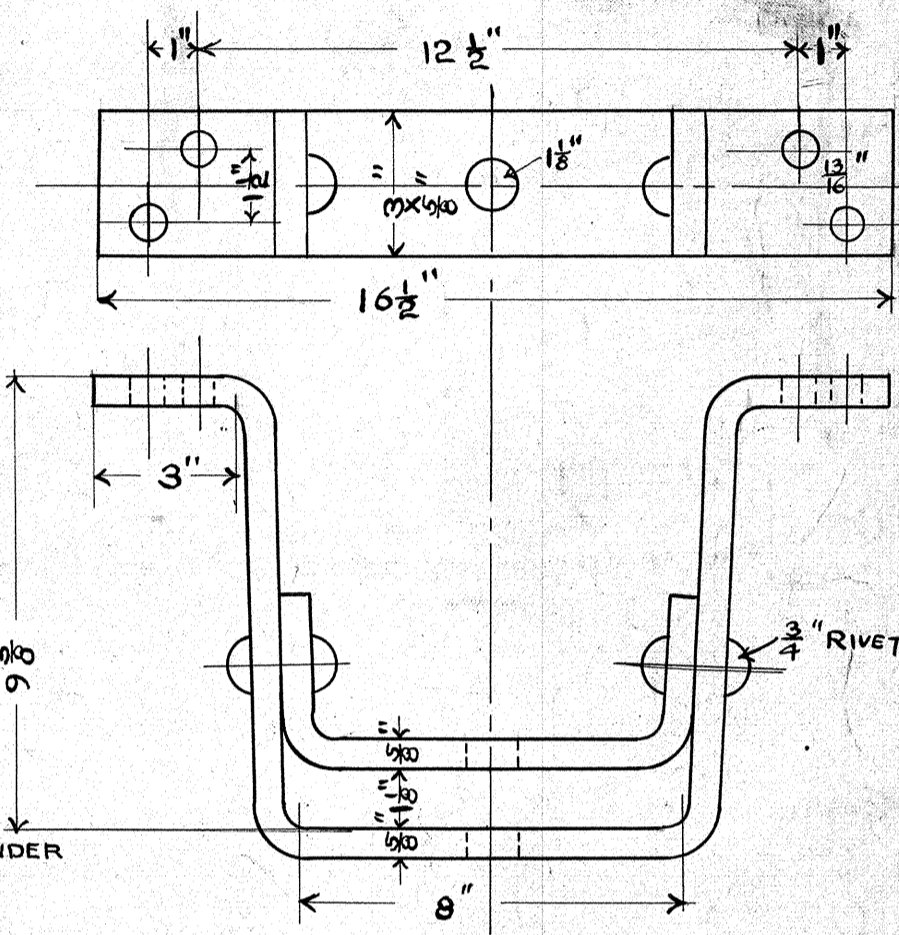
FULCRUM LEVER BRACKET
1 WANTED THUS

GOOD FOR NOS 33 & 47. SEE TR. N° 2056 1/2 FOR REMAINDER



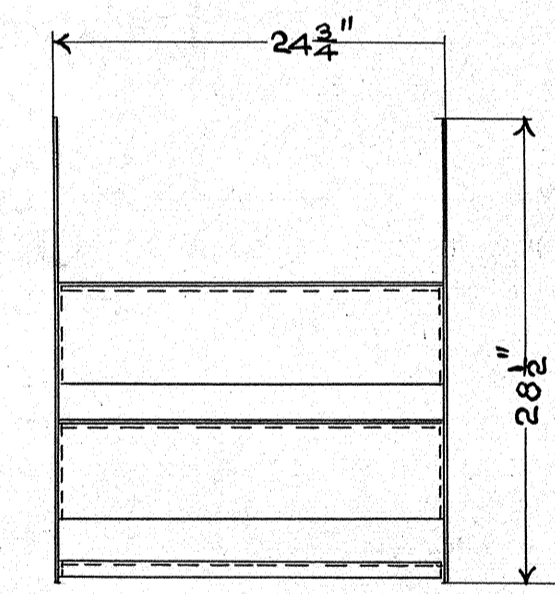
AUXILIARY RESERVOIR BRACKET
2 WANTED THUS

GOOD FOR NOS 33 & 47 ONLY. SEE TR. N° 2056 1/2 FOR REMAINDER

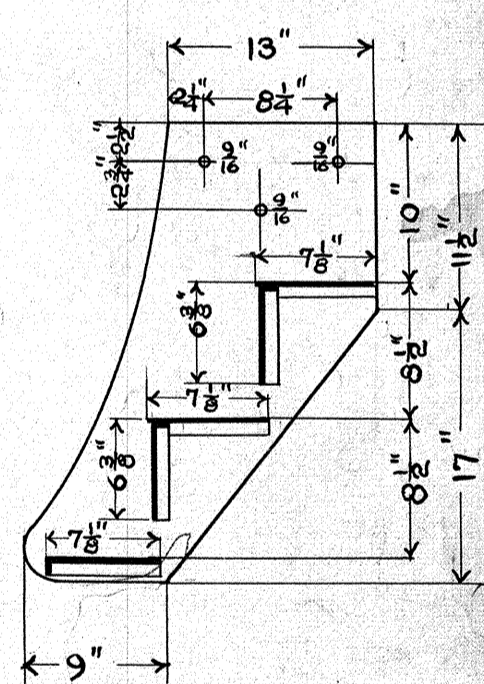


HAND BRAKE LEVER BRACKET
1 WANTED THUS

GOOD FOR NOS 33 & 47. SEE TR. N° 2056 1/2 FOR REMAINDER



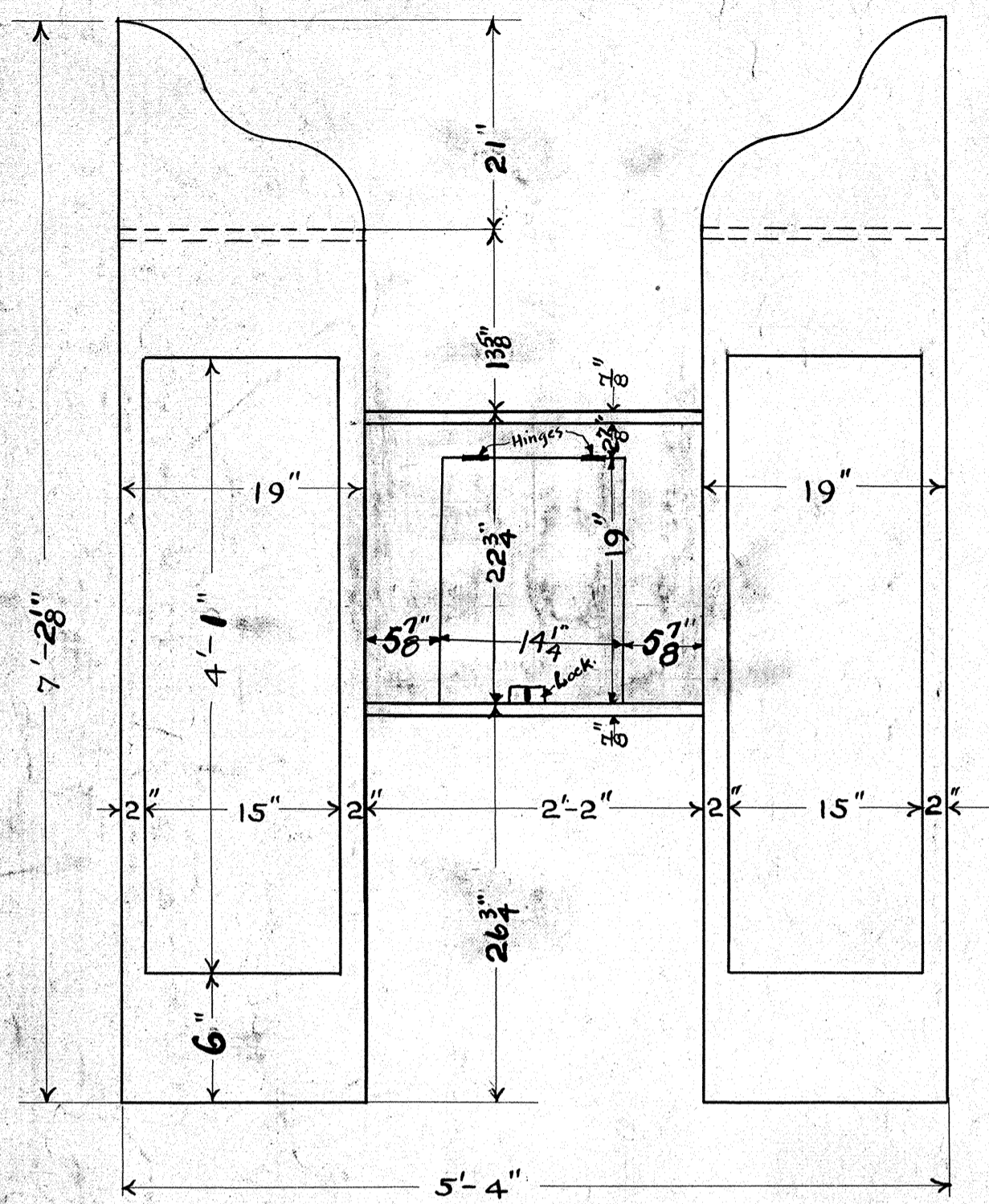
STEEL STEP
4 WANTED THUS



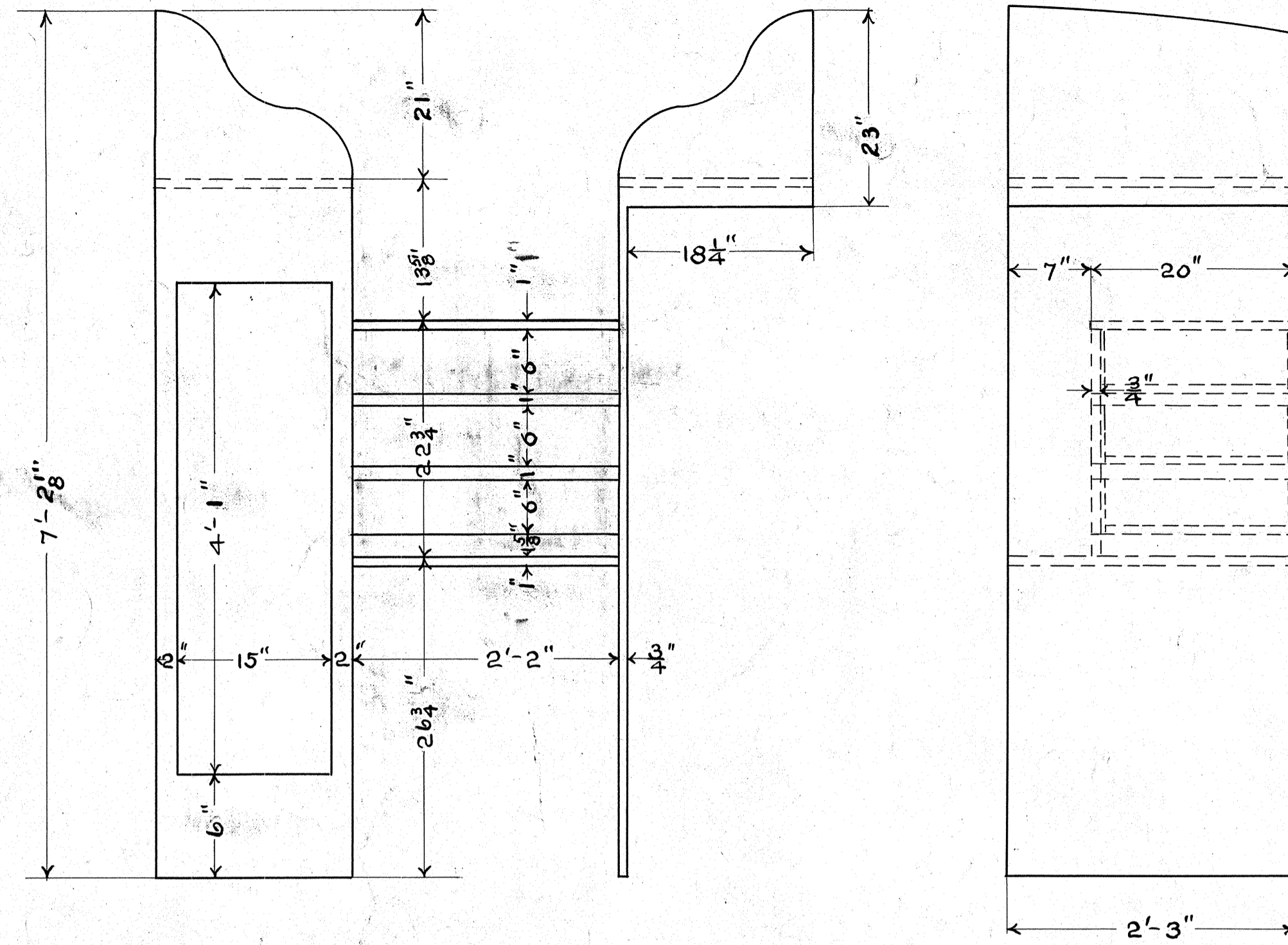
CARHOUSE
TYPE C

**BODY AND BRAKE
STEEL DETAILS**
M. P. & C. Dept. D. M. & N. Ry.
Proctor, Minn. 5-18-1

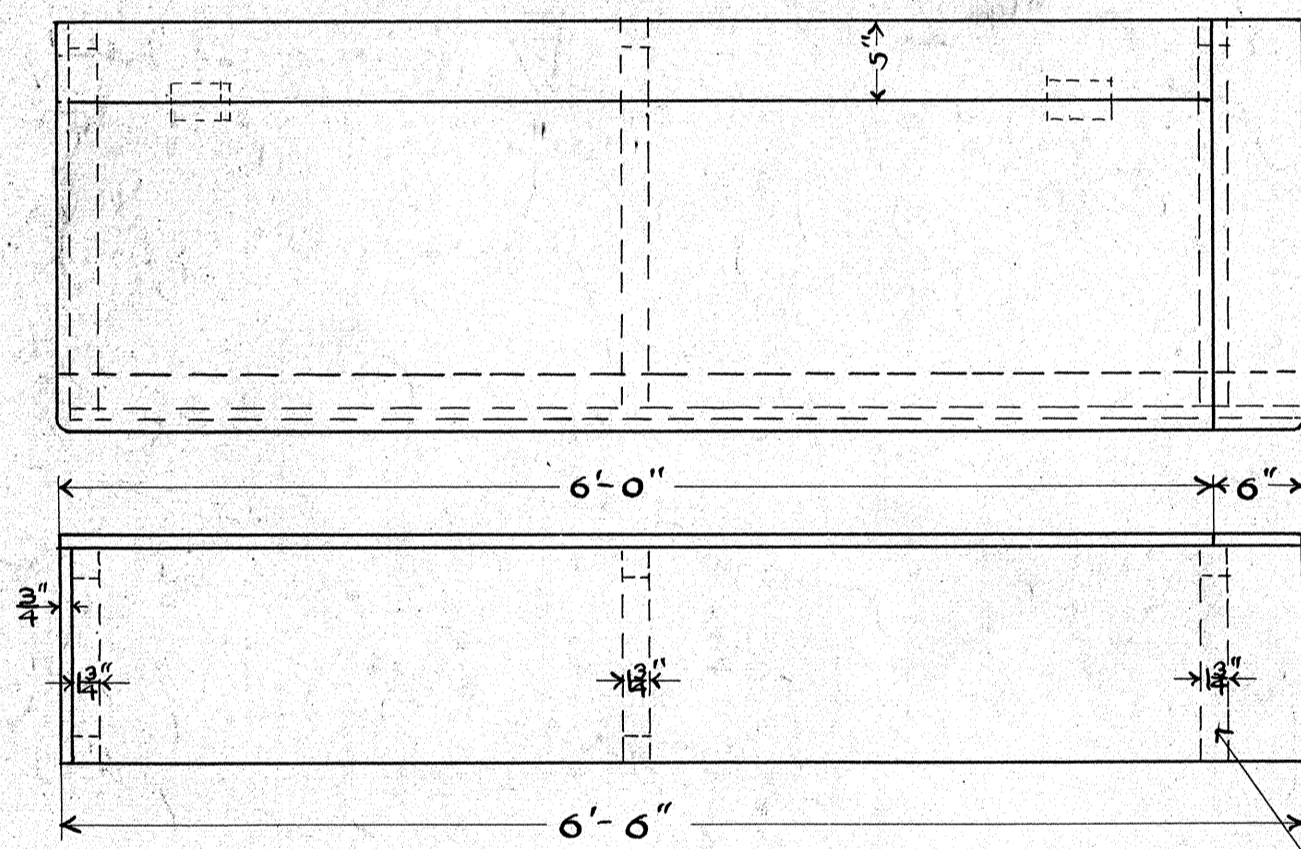
APPROVED
Proctor
20



CUPOLA SEAT ARRANGEMENT "A"

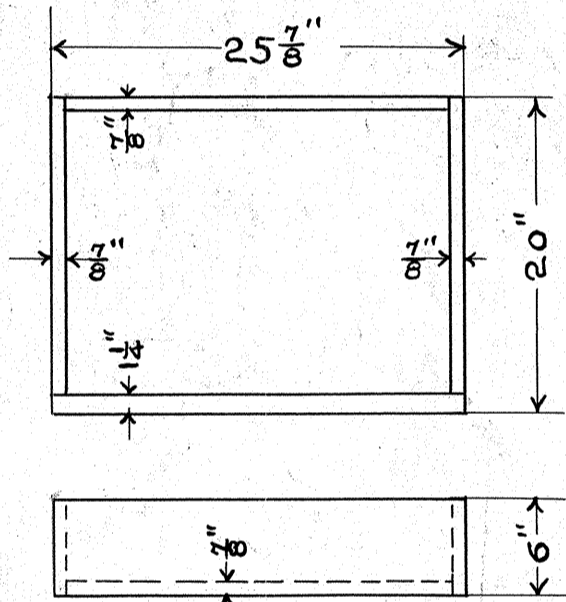


CUPOLA SEAT ARRANGEMENT "B"

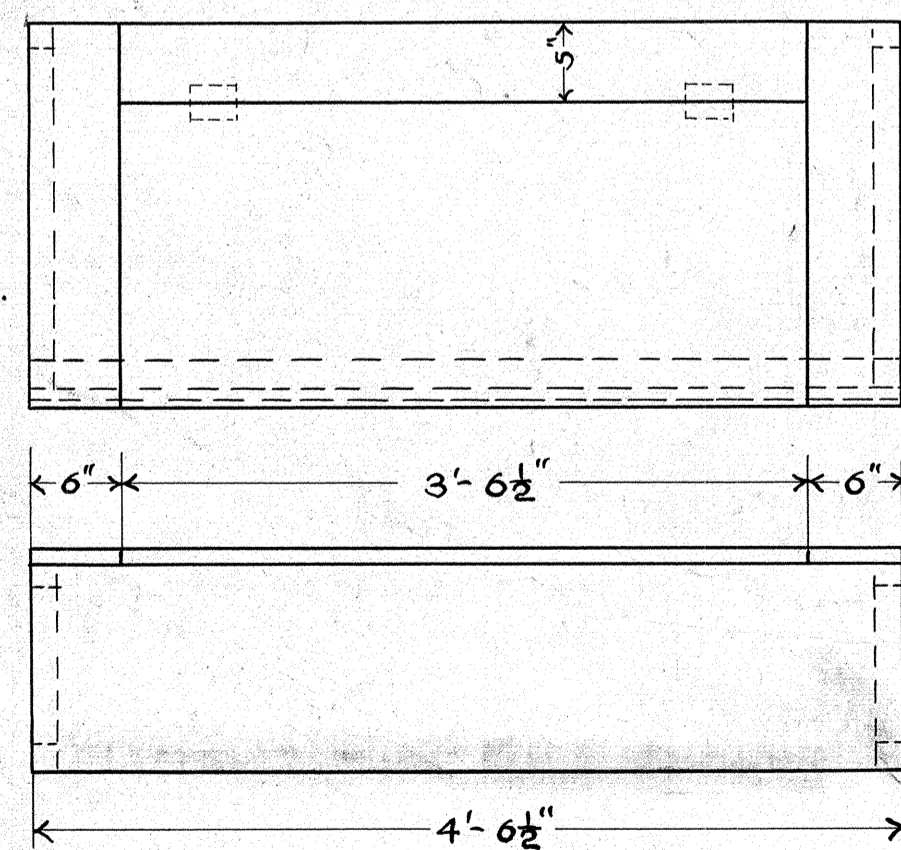


SEAT 2 WANTED 1 RIGHT 1 LEFT

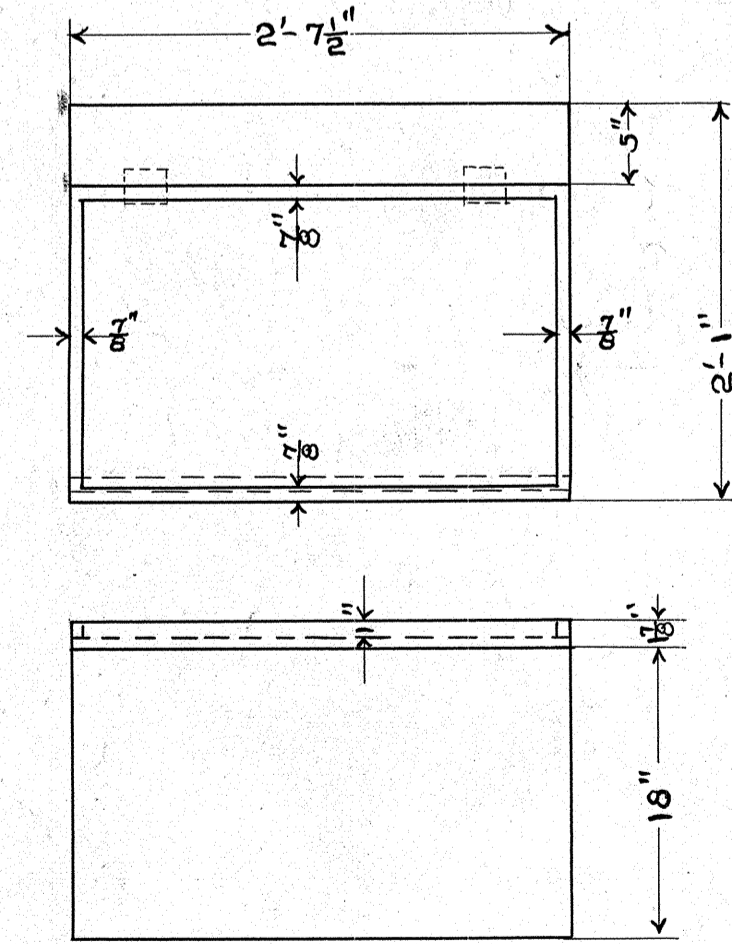
THIS FRAME WITHOUT BOTTOM BRACE



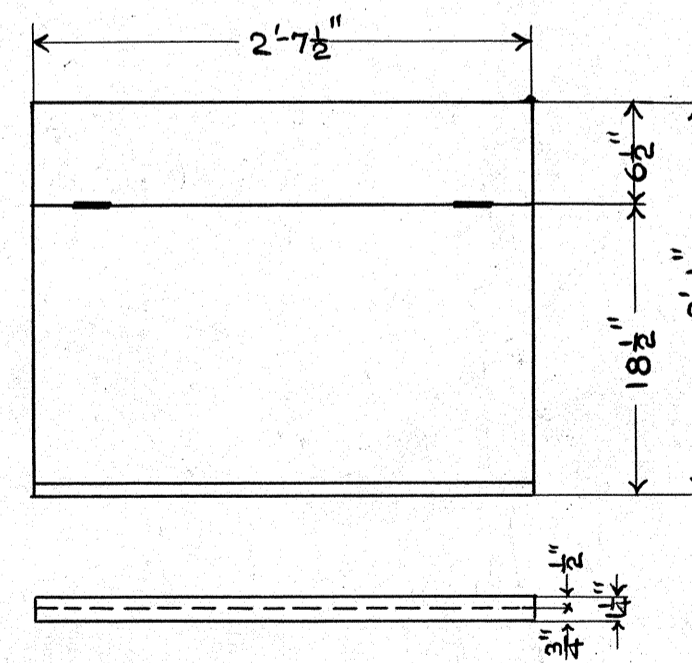
DRAWER
3 THUS



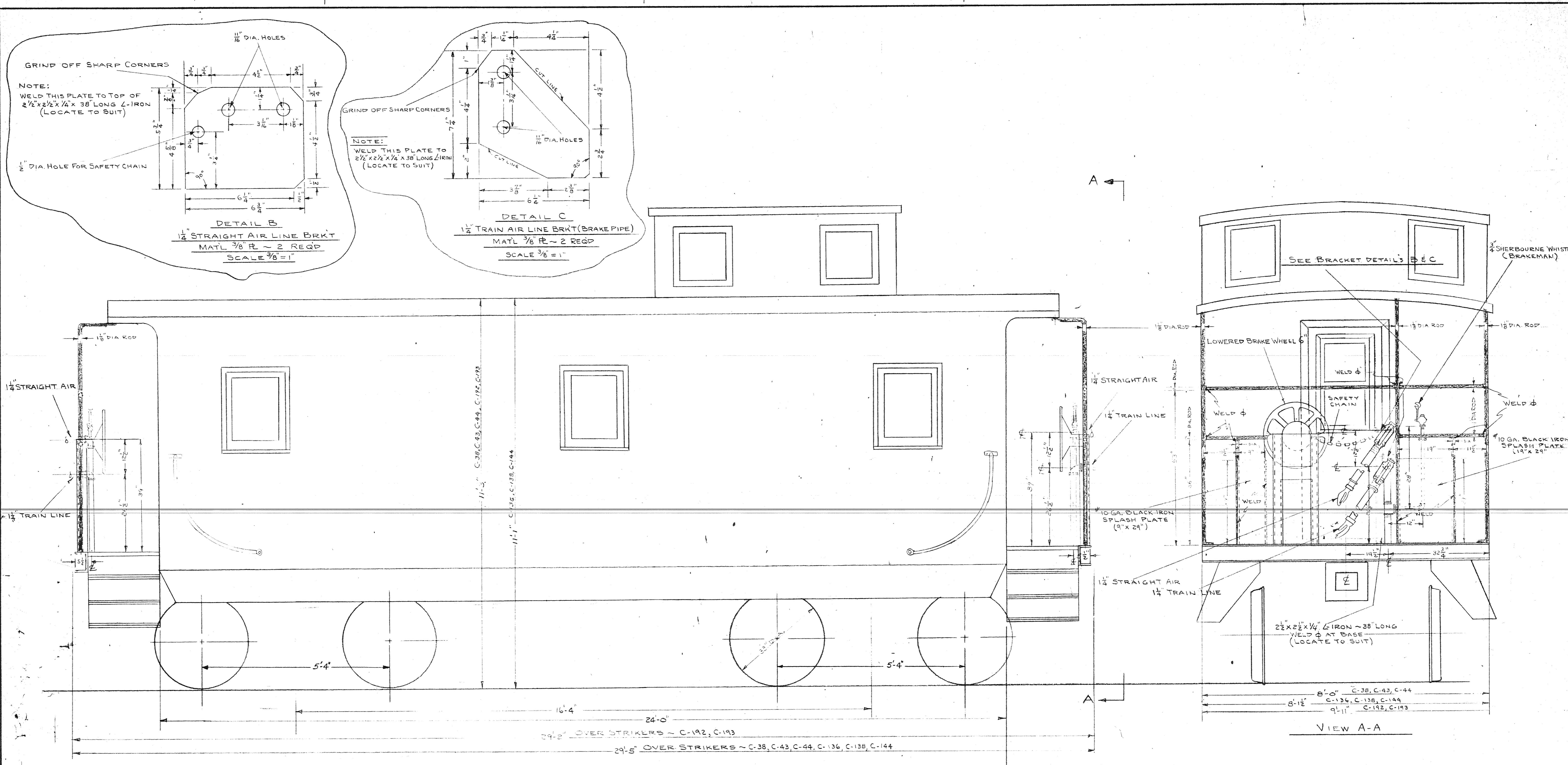
SEAT 1 THUS



OIL BOX
TOP OF COVER AND INSIDE OF BOX LINED WITH ZINC




LANTERN TRAY
1 THUS



SIDE ELEVATION
SCALE 3/4" = 1'-0"

VIEW A-A

NOTES:
STRAIGHT AIR RETAINER PIPING INSTALLED ON THE FOLLOWING WOOD CABOOSES ~ C-38, C-43, C-44, C-136, C-138, C-144
FOR GEN'L STRAIGHT AIR LINE PIPING LAYOUT SEE MECH. DEPT DWG. NO. 10078 REV. D

REVISIONS	REFERENCE DRAWINGS MECH. DEPT. DWG. NO. 10078 REV. D	SCALE: AS SHOWN	DULUTH MISSABE AND IRON RANGE RY. CO.	TITLE: TYPICAL WOOD CABOOSE END PLATFORM & AIR PIPING ARRANGEMENT	PROJ. NO.
		DRAWN: H. J. L.			MISSABE BLDG.  DULUTH, MINN.
		DATE: 1-9-74	ENGINEERING SERVICES DEPARTMENT		A.P.E. NO.
		CHECKED:			APPROVED:
		DATE:	ENGINEER.		CONTINUED
		SUB. DEPT. O.K.			1 OF 1
		DATE:		DIVISION MISSABE LOCATION PROCTOR	

Handwritten signature: *J. Carr*