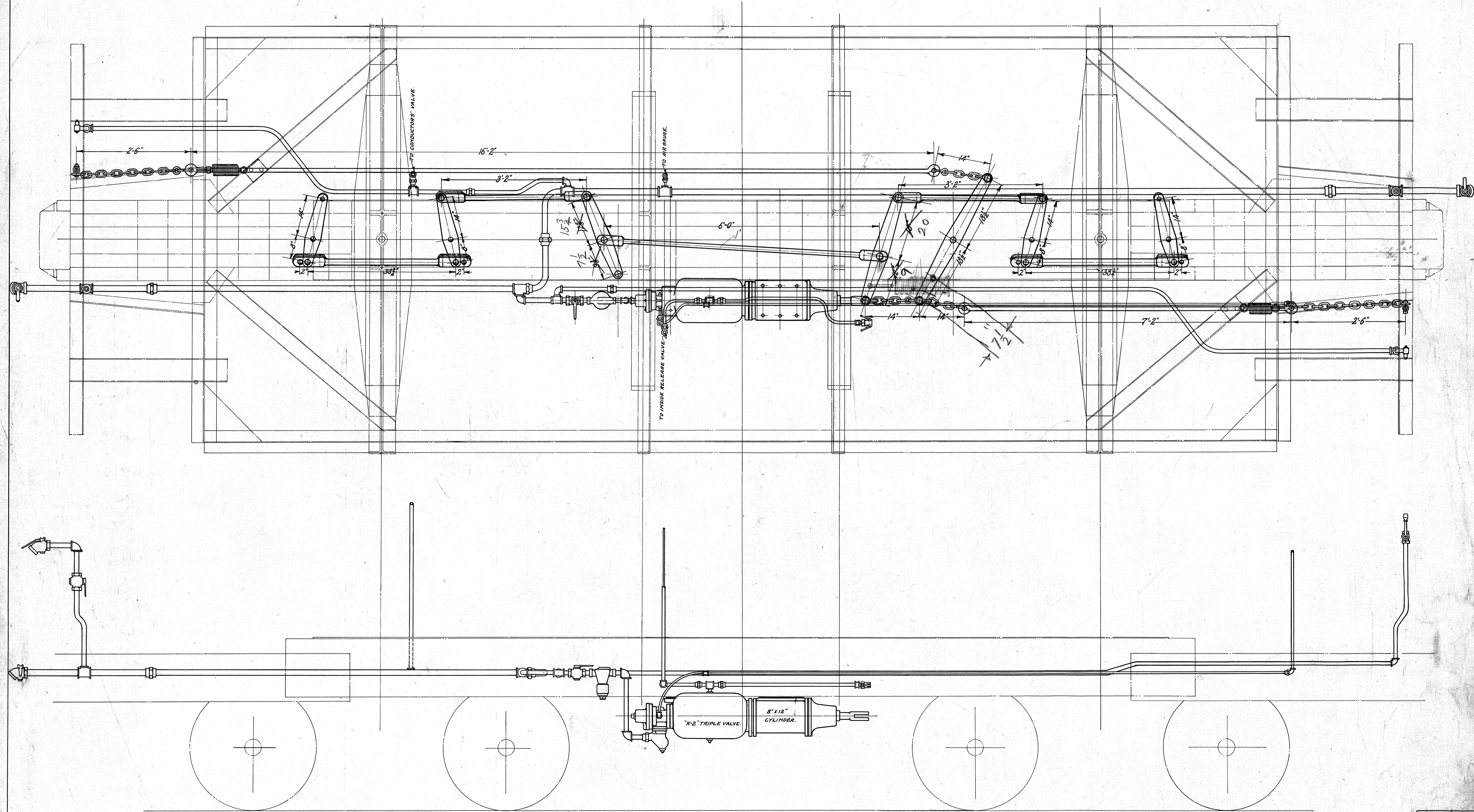


CABOOSE 6-2  
TYPE CLASS

GENERAL ARRANGEMENT

M. P. & C. Dept. D. M. & N. Ry. Co.  
 Prof. Min. MAY 14 1913  
 BY ROBERT

SPECIFIED SHATTER-PROOF GLASS FOR CUPOLA END WINDOWS B 16-10-13



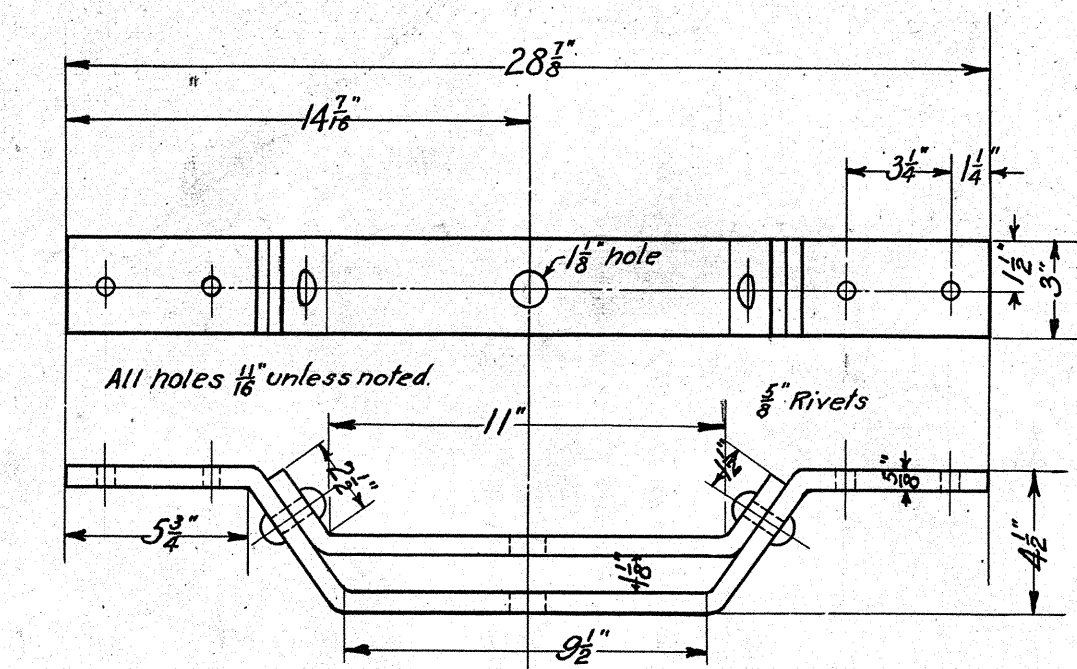
FREIGHT 6-2  
 TYPE CLASS

**BRAKE GEAR ARRANGEMENT**

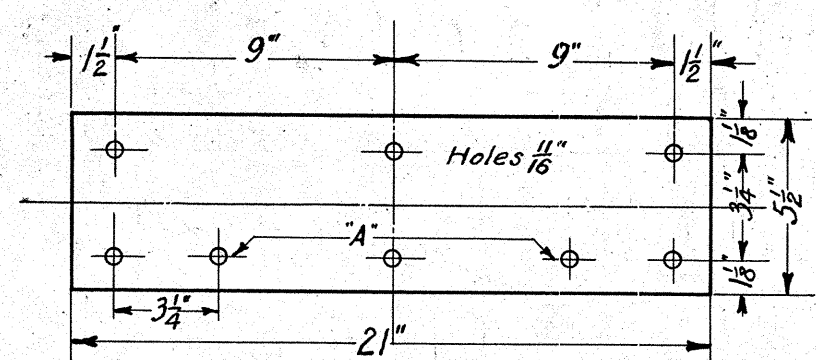
M. P. & C. Dept. D. M. & N. Ry. Co.  
 Proctor, Minn. DEC. 16 1924

APPROVED  
*[Signature]*  
 Supt. M. P. & C.

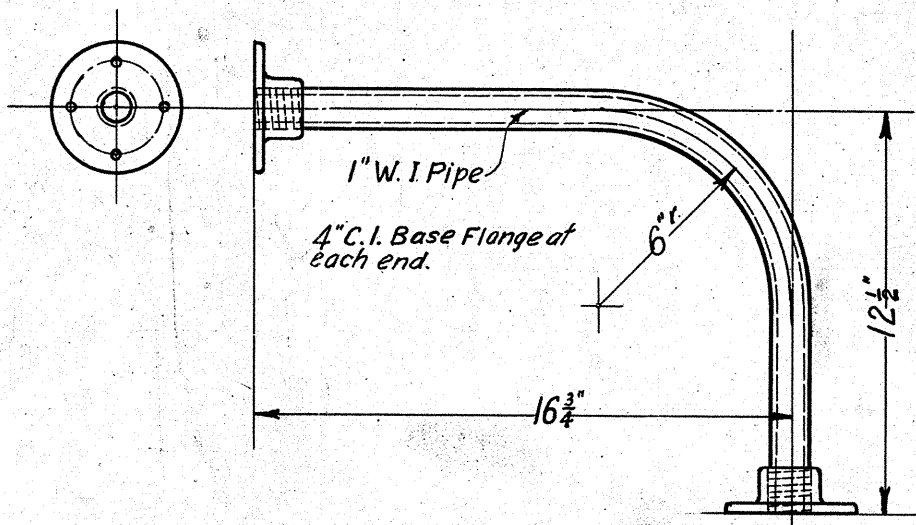
TRACING NO.  
**4132**



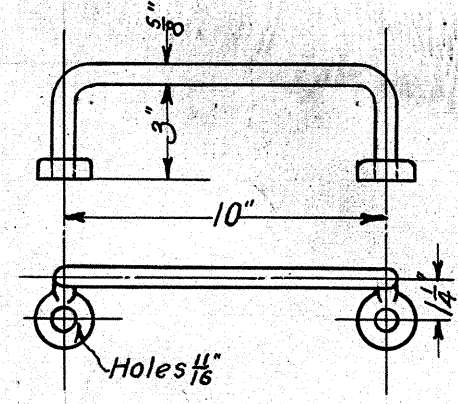
- HAND BRAKE FULCRUM BRACKET -  
3/8 x 3 Steel - 1 Required.



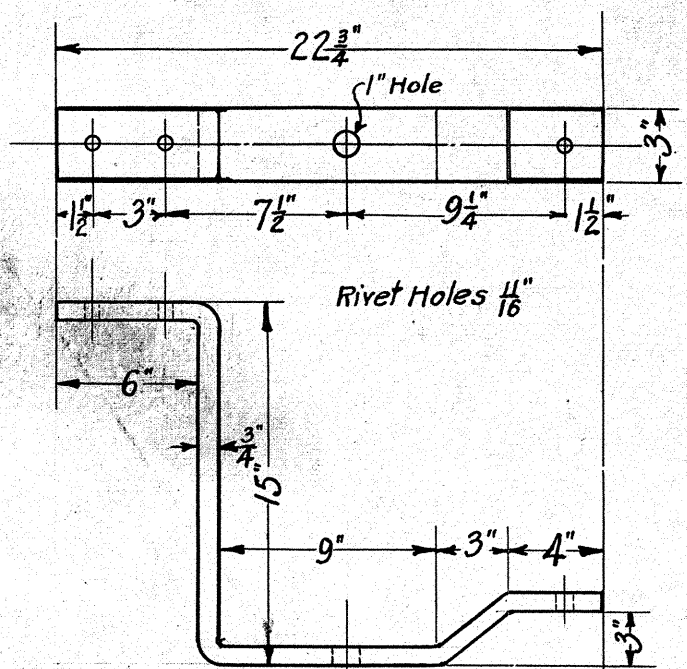
- BRAKE LEVER FULCRUM CARRIER -  
1/2 x 5 1/2 Plt. - 2 Required - One without holes 'A'.



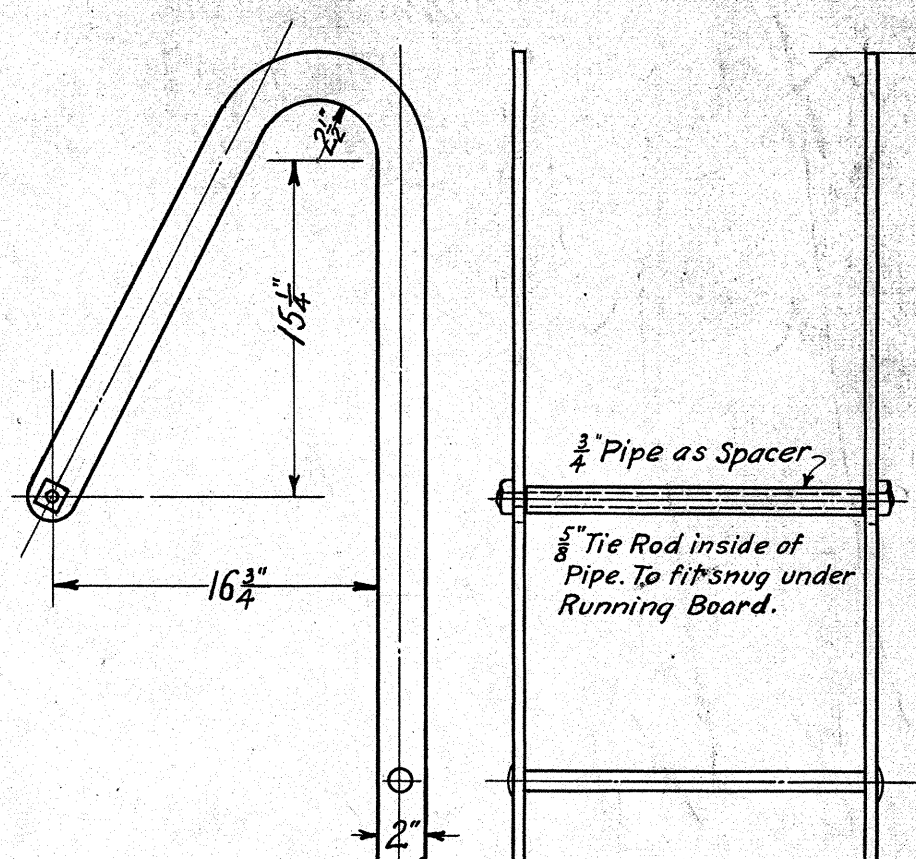
- CUPOLA SEAT RAIL -  
4 Required.



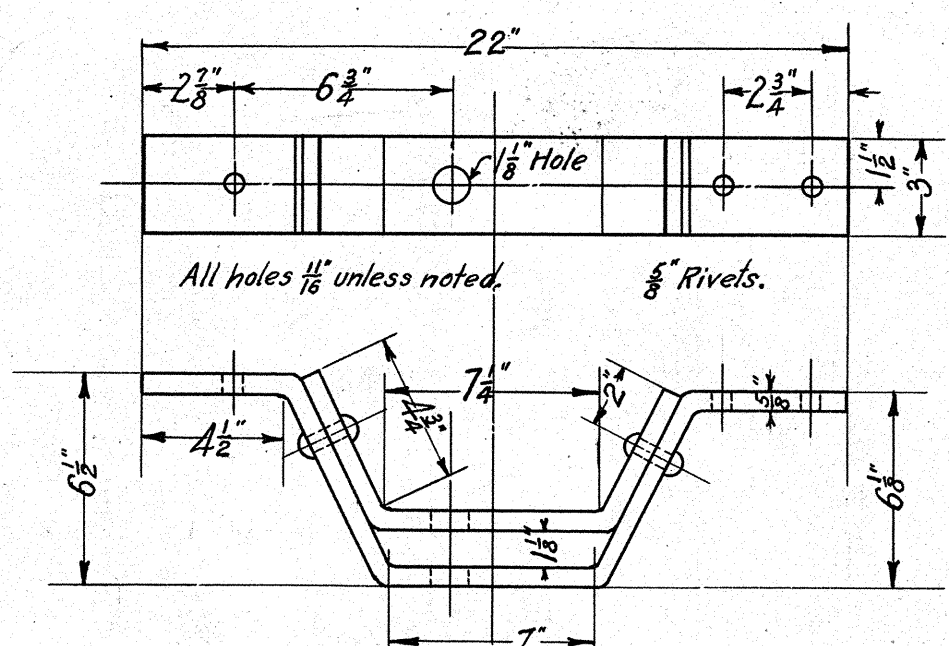
- CUPOLA STEP IRON -  
3/8 Iron - 8 Required.



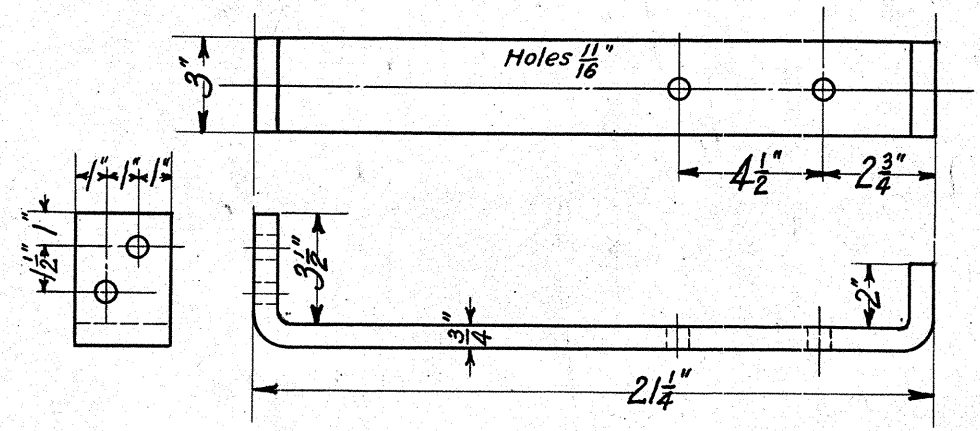
- BRAKE STAFF BRACKET -  
3/8 x 3 Steel - 2 Required.



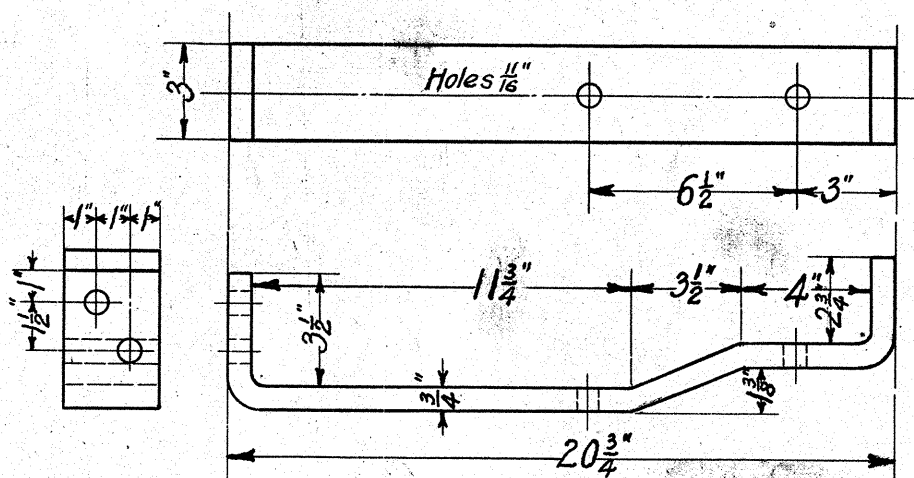
- END LADDER -  
1/2 x 2 Steel - 2 Required.



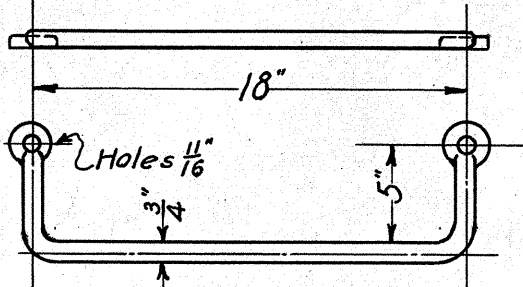
- BRAKE LEVER FULCRUM BRACKET -  
3/8 x 3 Steel - 1 Required.



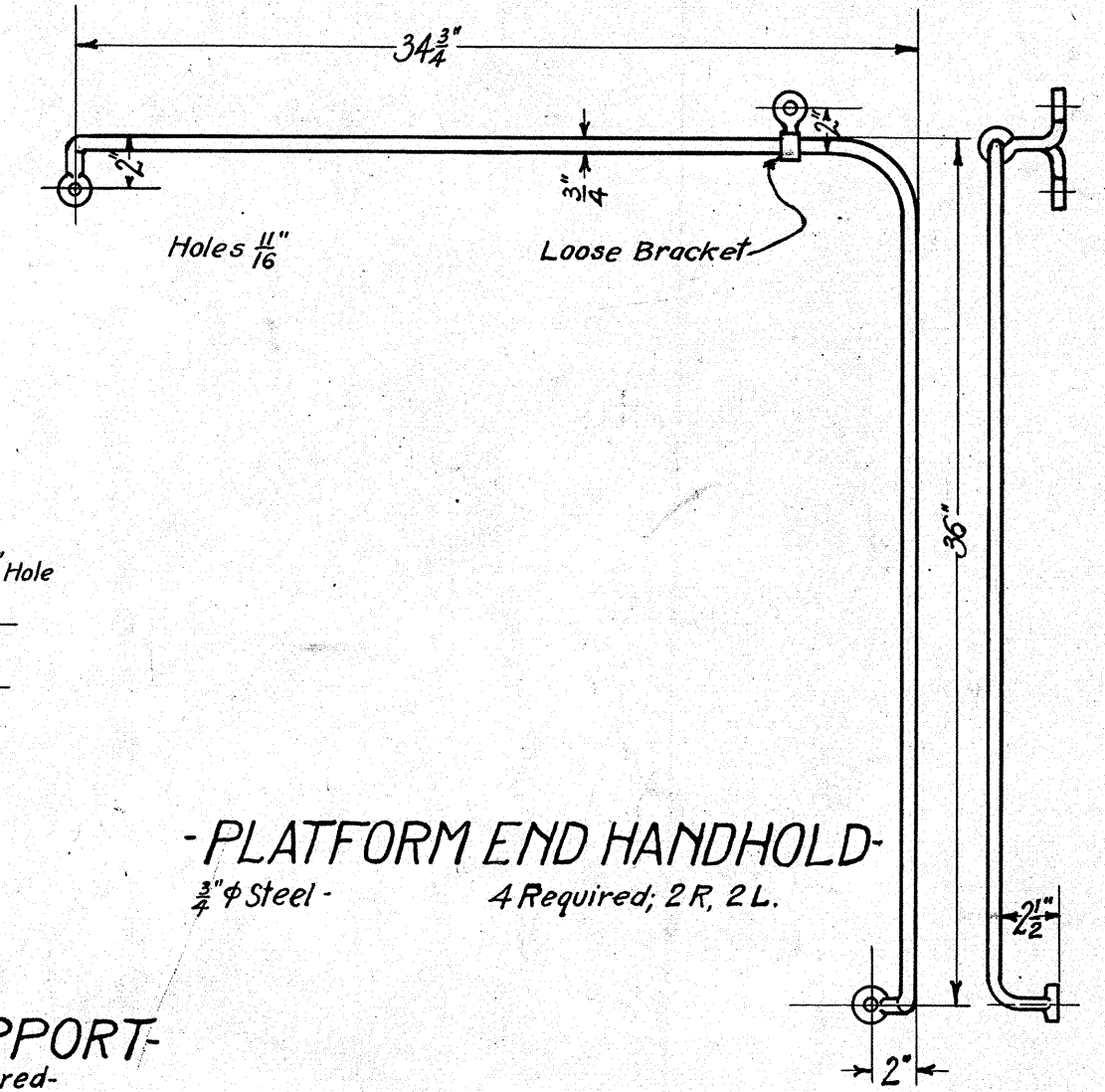
- SUPPLY BOX HANGER - REAR -  
3/4 x 3 Steel - 2 Required.



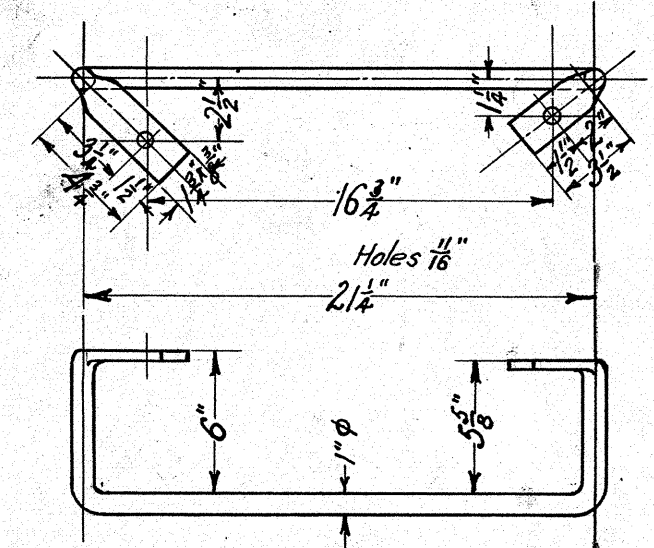
- SUPPLY BOX HANGER - FRONT -  
3/4 x 3 Steel - 2 Required.



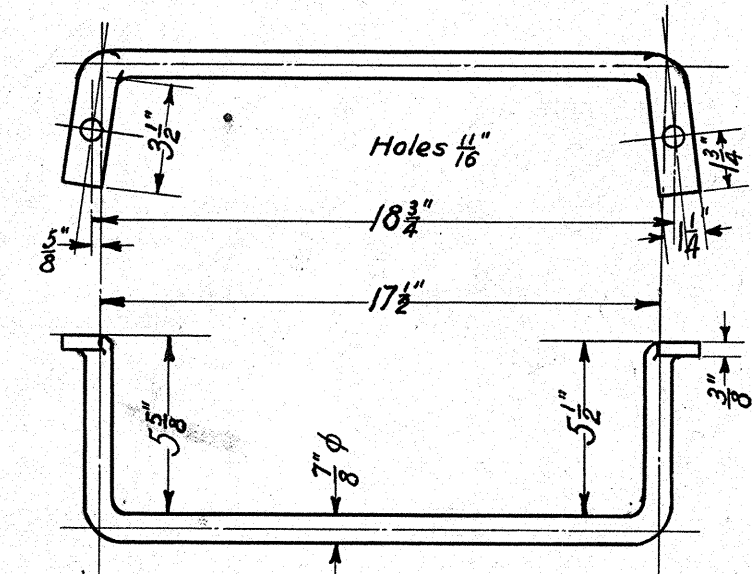
- END SILL GRAB IRON -  
3/4 Iron - 4 Required.



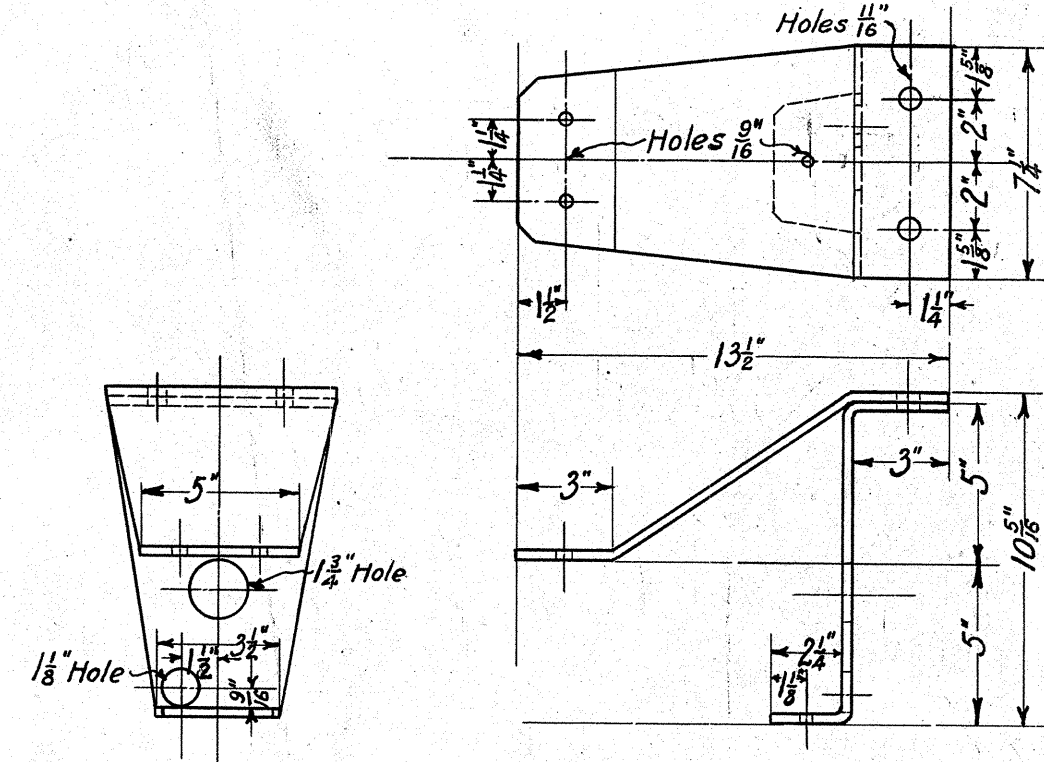
- PLATFORM END HANDHOLD -  
3/4 Steel - 4 Required; 2 R, 2 L.



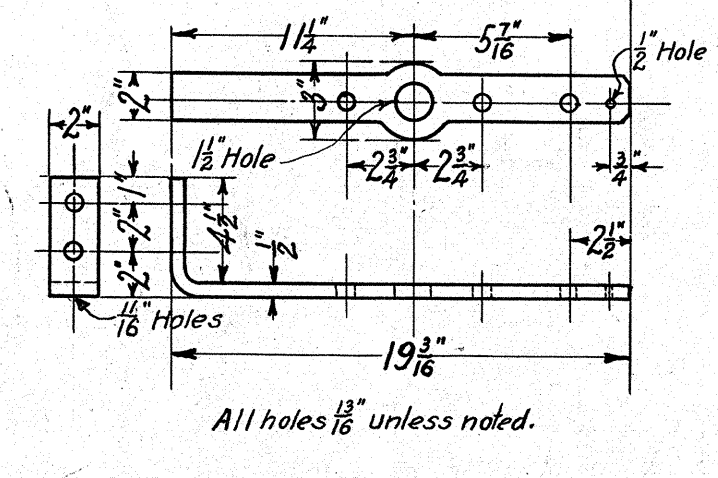
- BRAKE LEVER GUIDE -  
1/4 Steel - 1 Required.



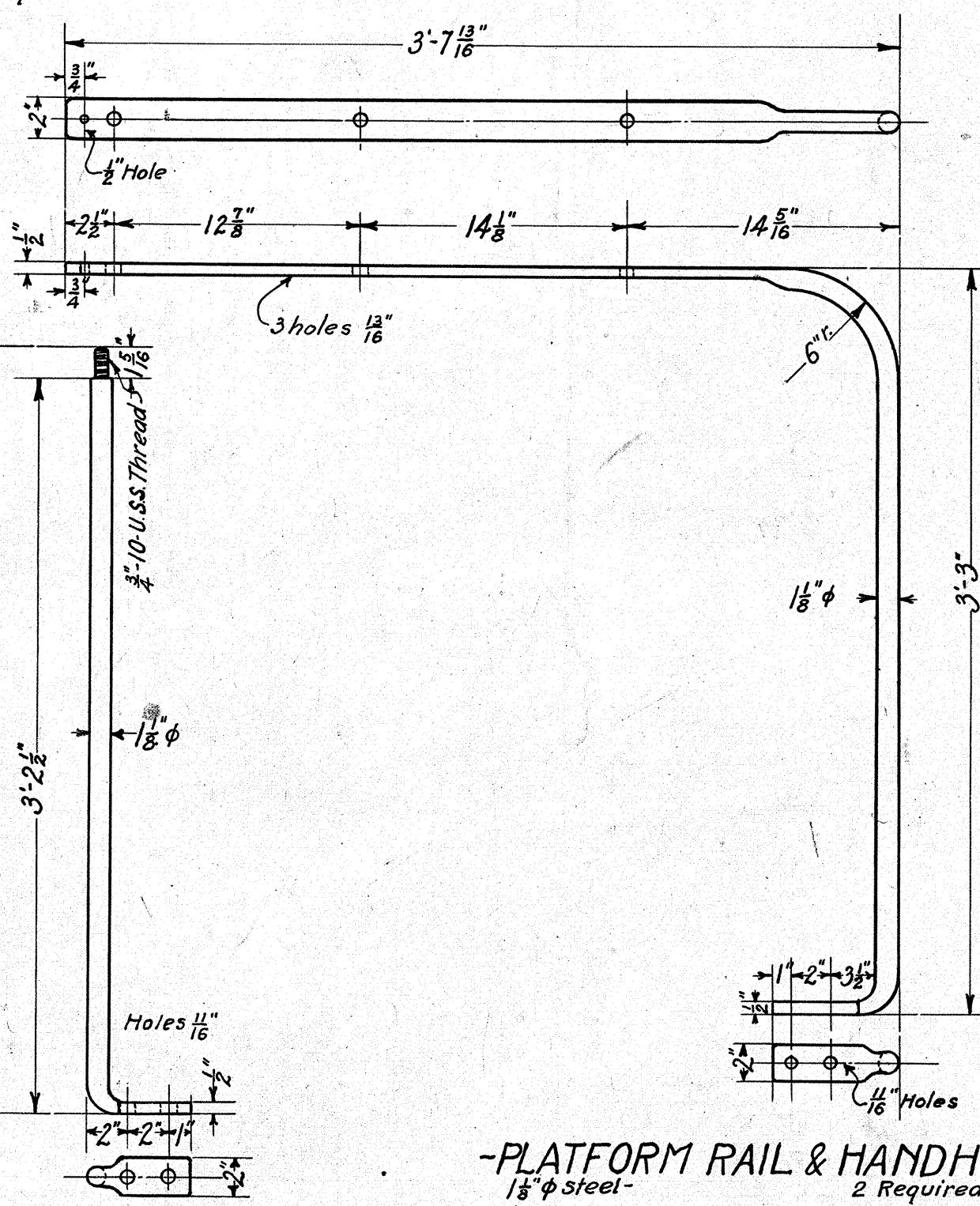
- HAND BRAKE LEVER GUIDE -  
2 Required - 1 R, 1 L.



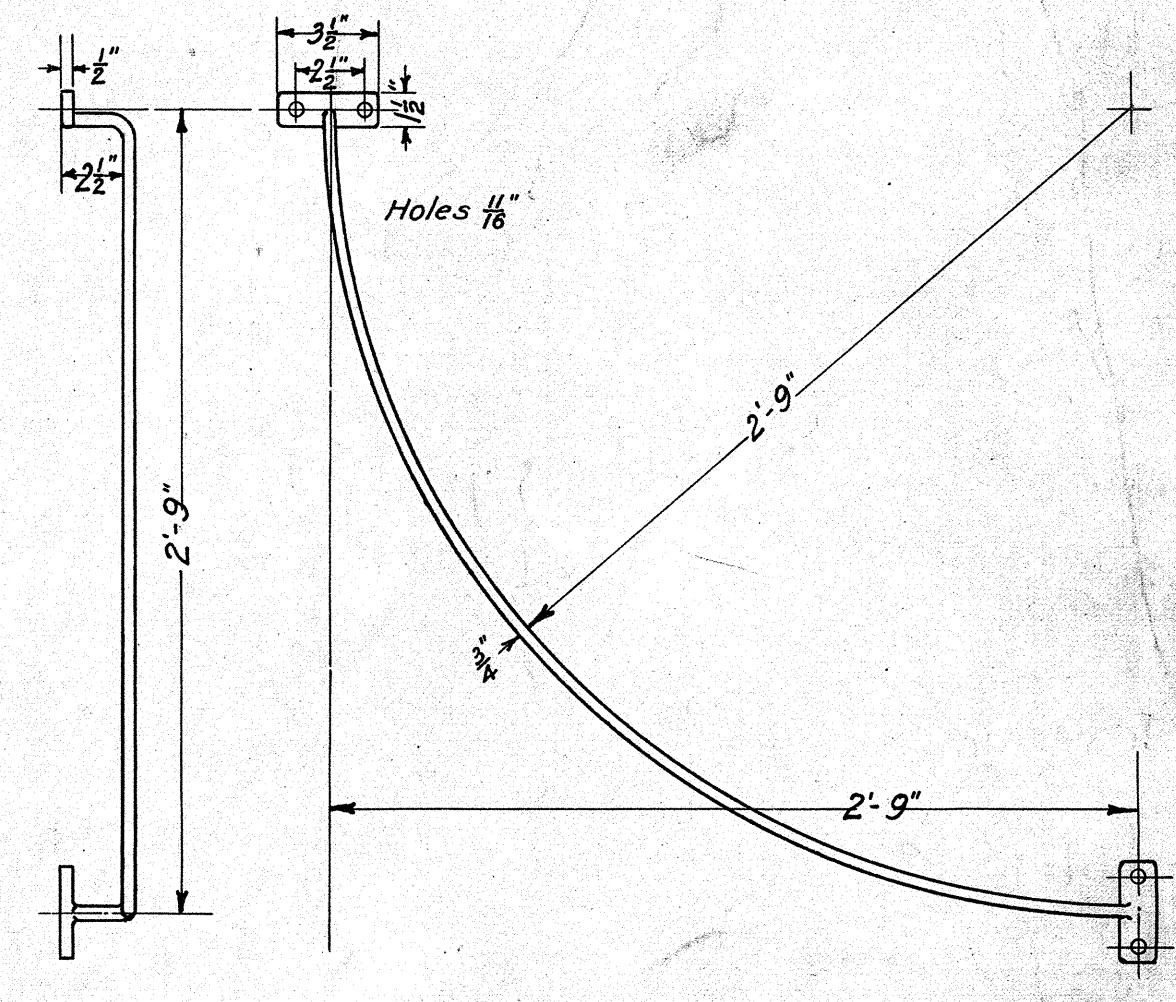
- AIR BRAKE & SIGNAL HOSE BRACKET -  
1/8 Plate - 2 Required.



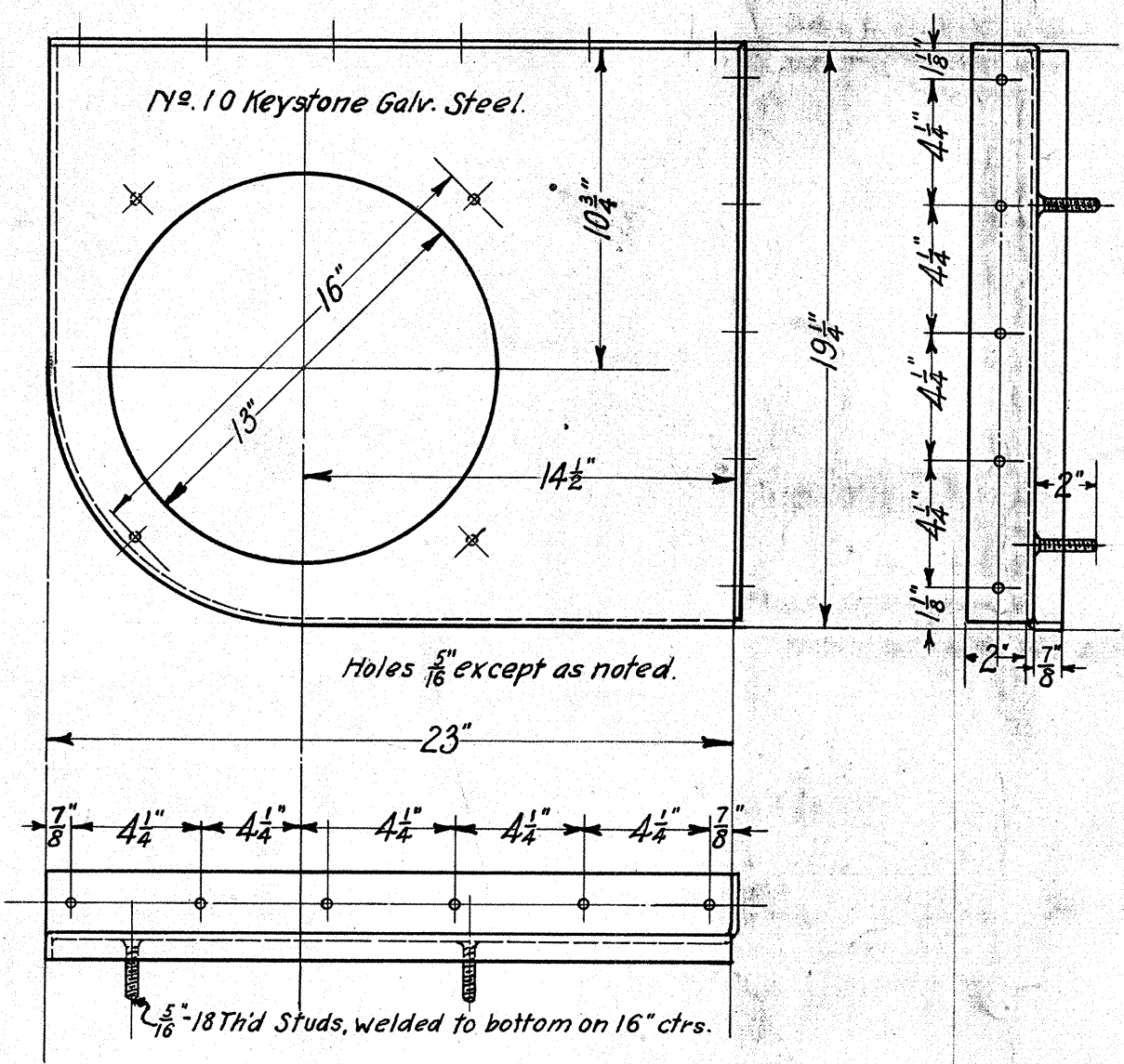
- PLATFORM BRAKE SUPPORT -  
1/2 x 2 Steel - 2 Required.



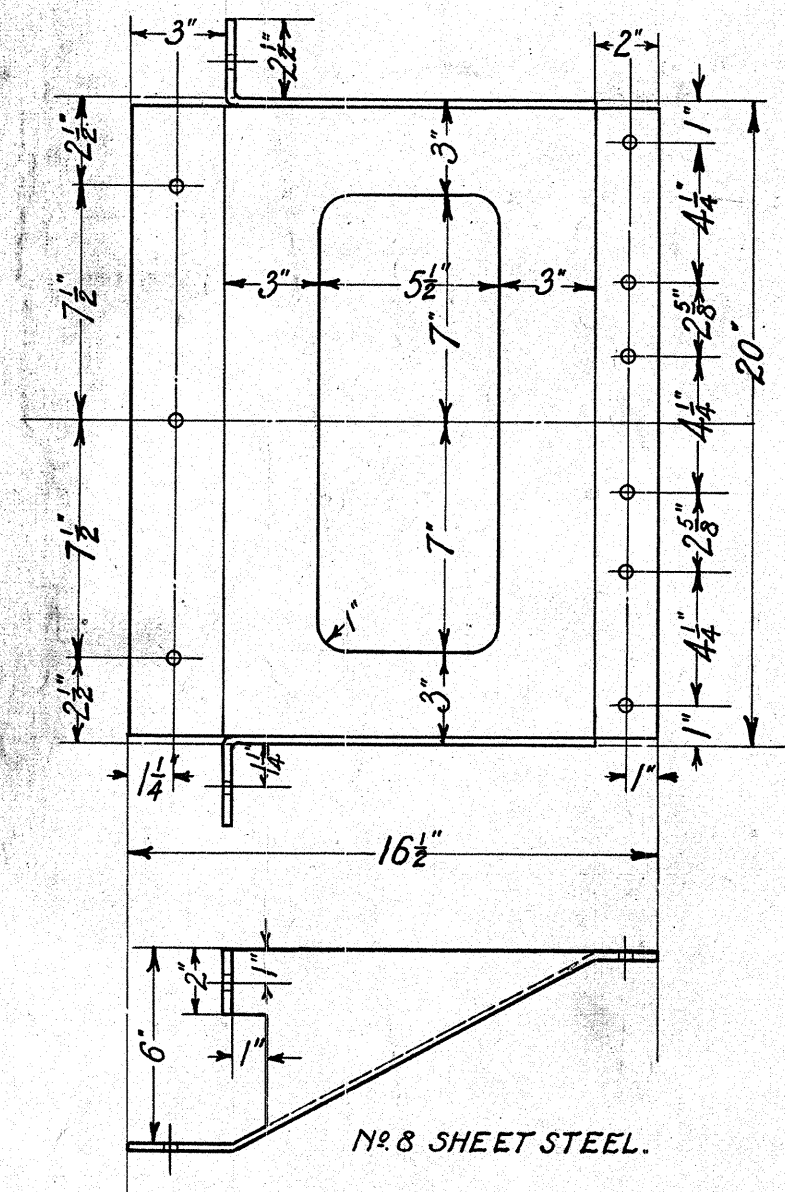
- PLATFORM RAIL & HANDHOLD -  
1 1/2 Steel - 2 Required.



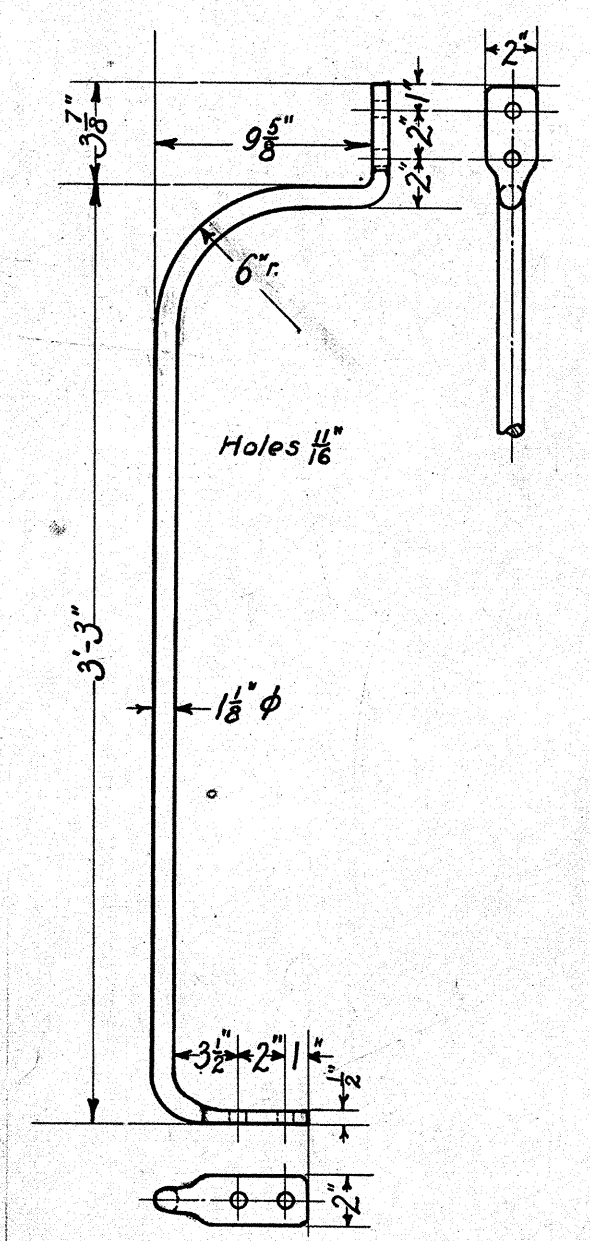
- SIDE HANDHOLD -  
3/4 Steel - 4 Required.



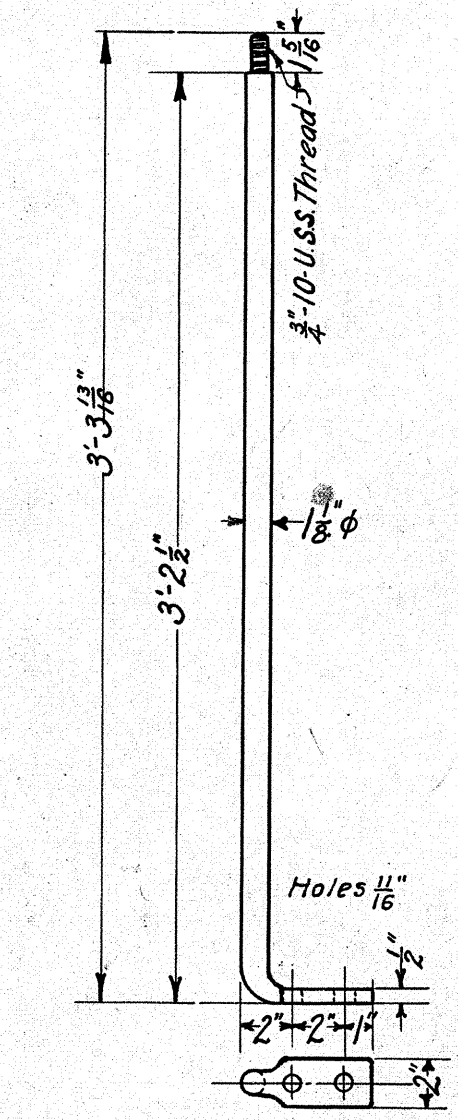
- WASH STAND -  
1 Required.



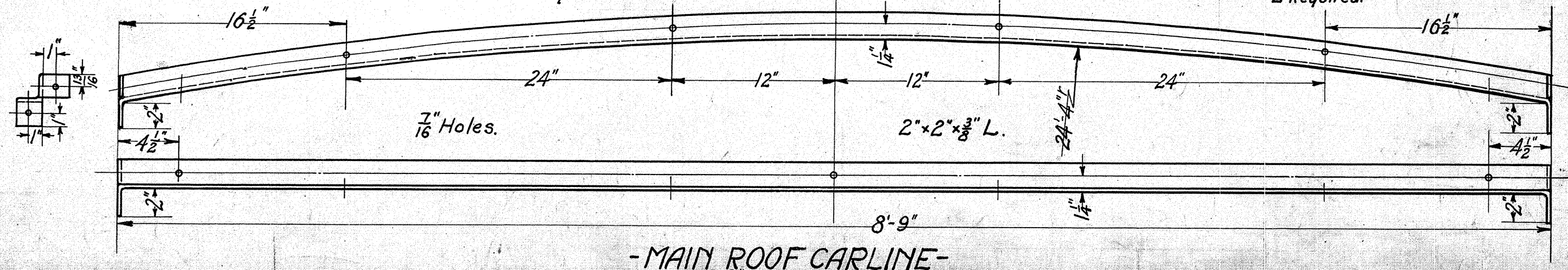
- RUNNING BOARD BRACKET -  
2 Required.



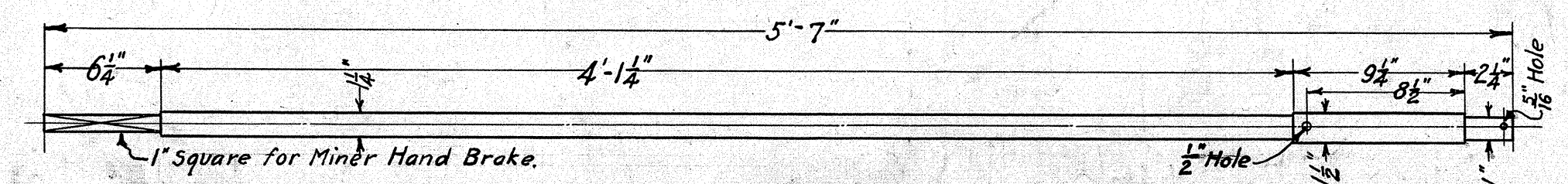
- PLATFORM HANDRAIL -  
1 1/2 Steel - 2 Required.



- RAILING POST -  
1 1/2 Steel - 8 Required.

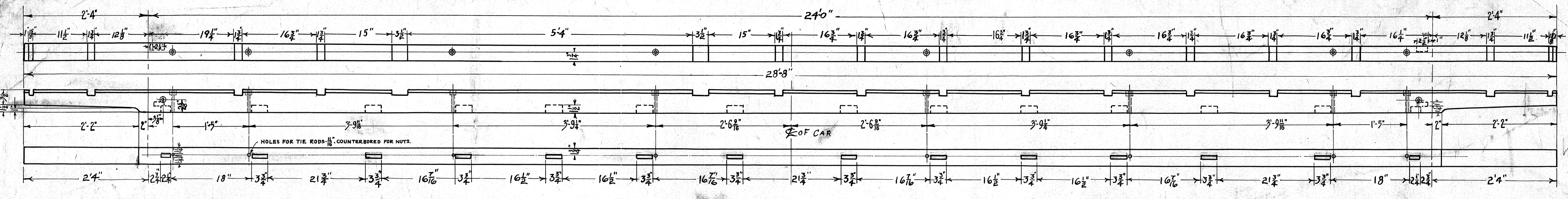


- MAIN ROOF CARLINE -  
2 x 2 x 3/8 L - 7 Required.

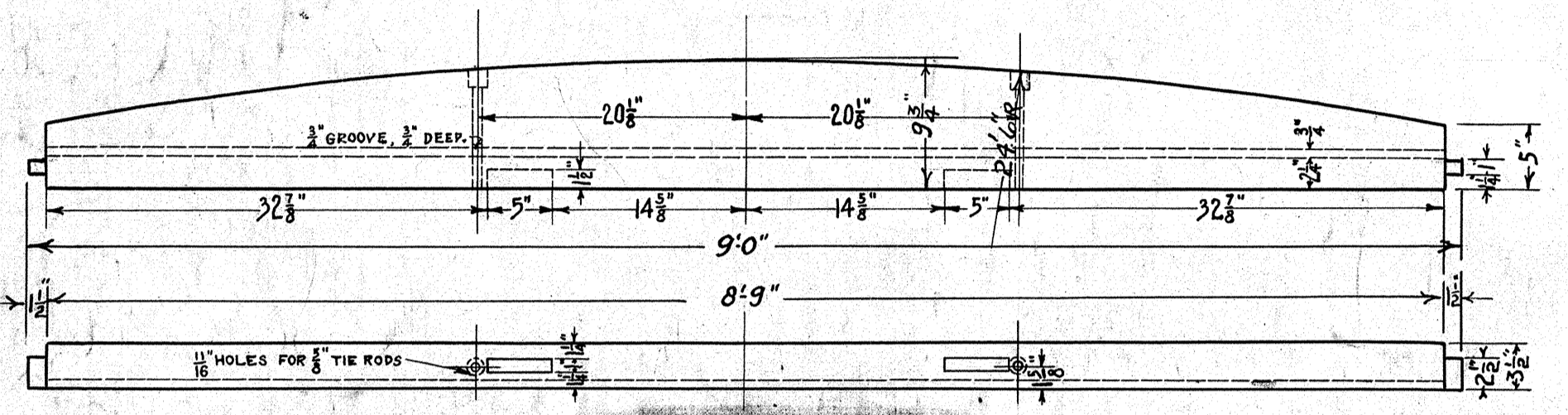


- BRAKE STAFF -  
1 1/2 Steel - 2 Required.

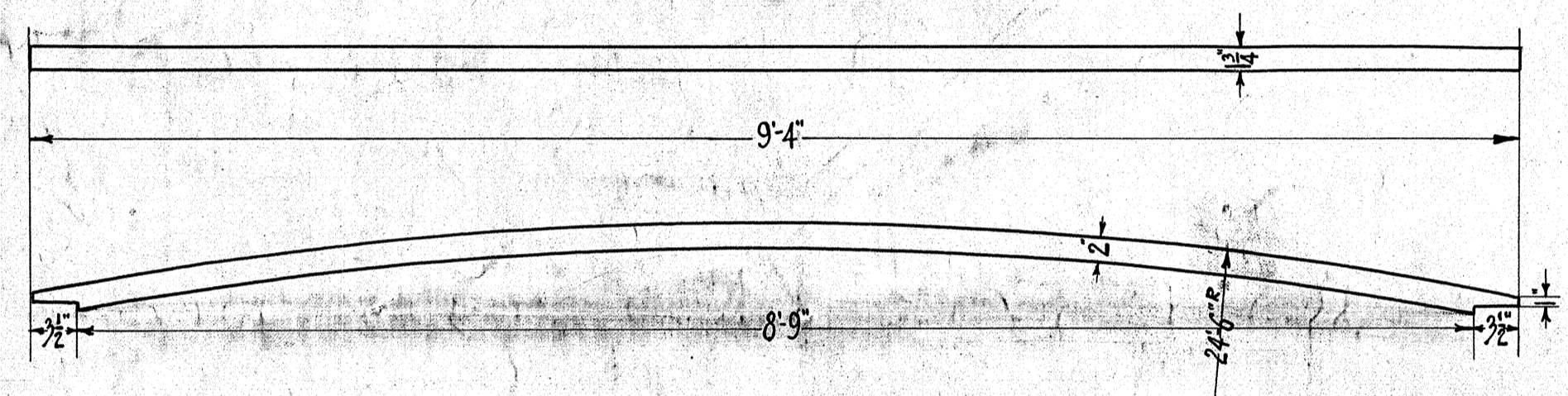
CABOOSE 6-2	
TYPE CLASS	
MISCELLANEOUS DETAILS	
M. P. & G. Dept. D. M. & N. Ry. Co.	
BOSTON, MASS.	
APPROVED	TRACING NO.
<i>Quinton</i>	4096
SUPV. M. P. & G.	



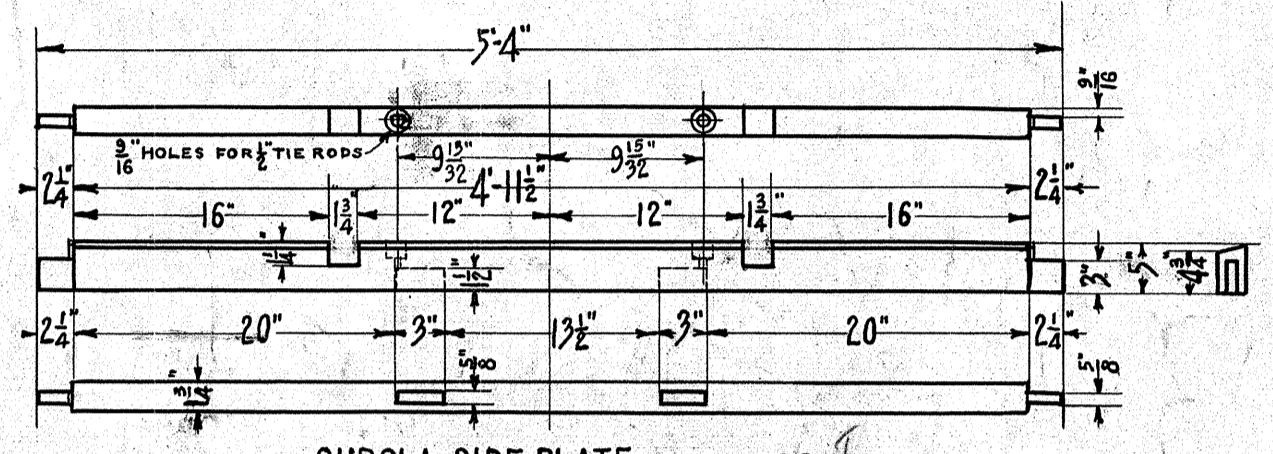
-SIDE PLATE- YELLOW PINE- 2 REQ. 1R. & 1L.



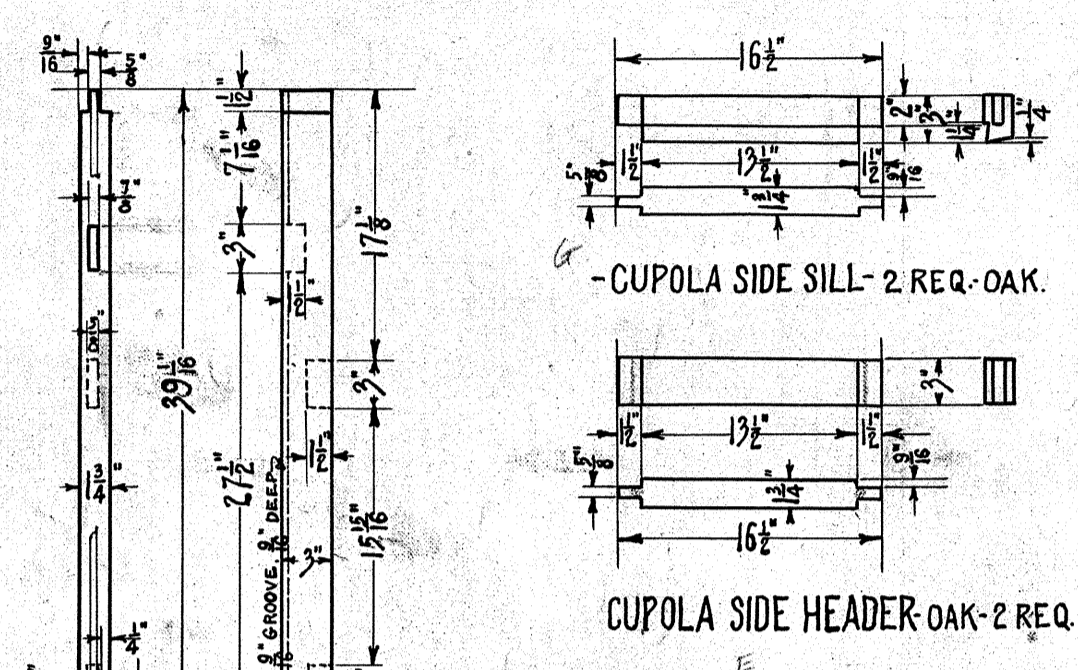
-END PLATE- YELLOW PINE- 2 REQ.



-ROOF CARLINE- OAK- 16 REQ.

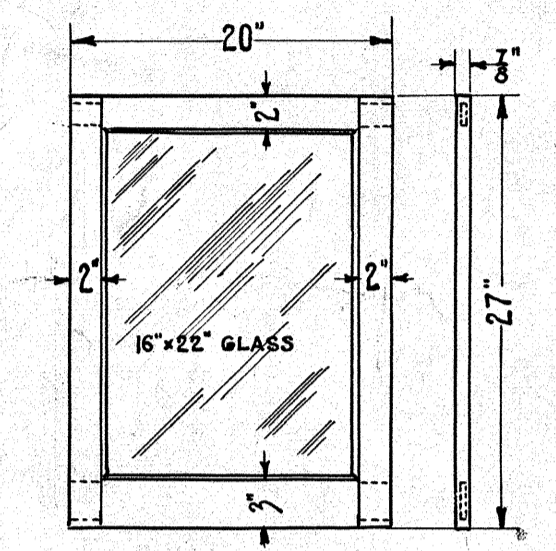


-CUPOLA SIDE PLATE- OAK- 2 REQ.

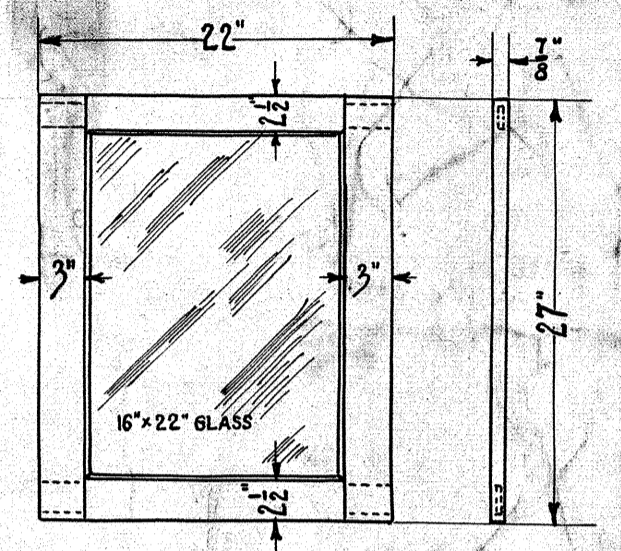


-CUPOLA SIDE SILL- 2 REQ. OAK.

CUPOLA SIDE HEADER OAK- 2 REQ.

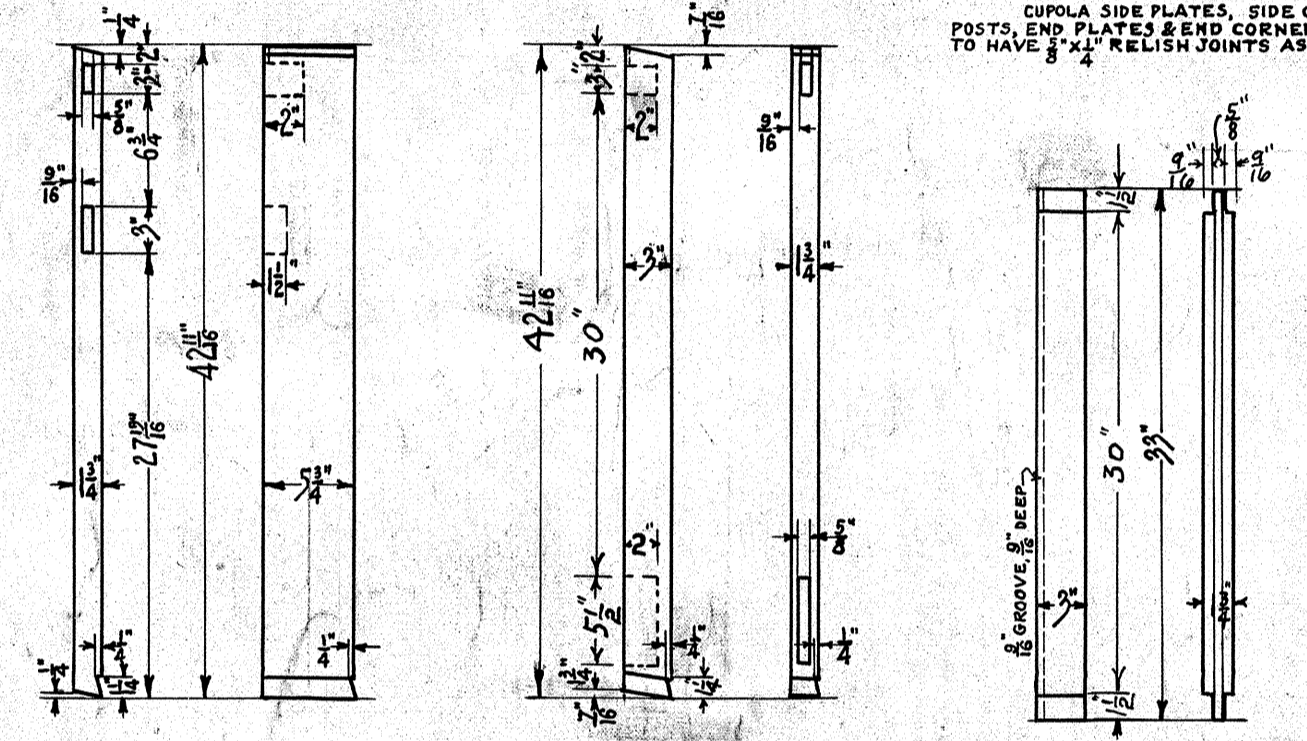


-SIDE WINDOW- 6 REQ.



CUPOLA WINDOW- 8 REQ.

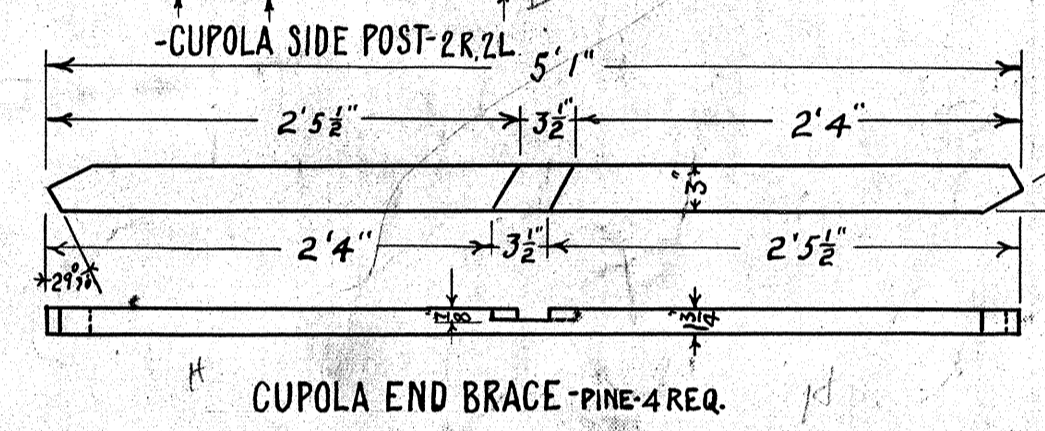
NOTE: CUPOLA SIDE PLATES, SIDE CORNER POSTS, END PLATES & END CORNER POSTS TO HAVE 1/8\"/>



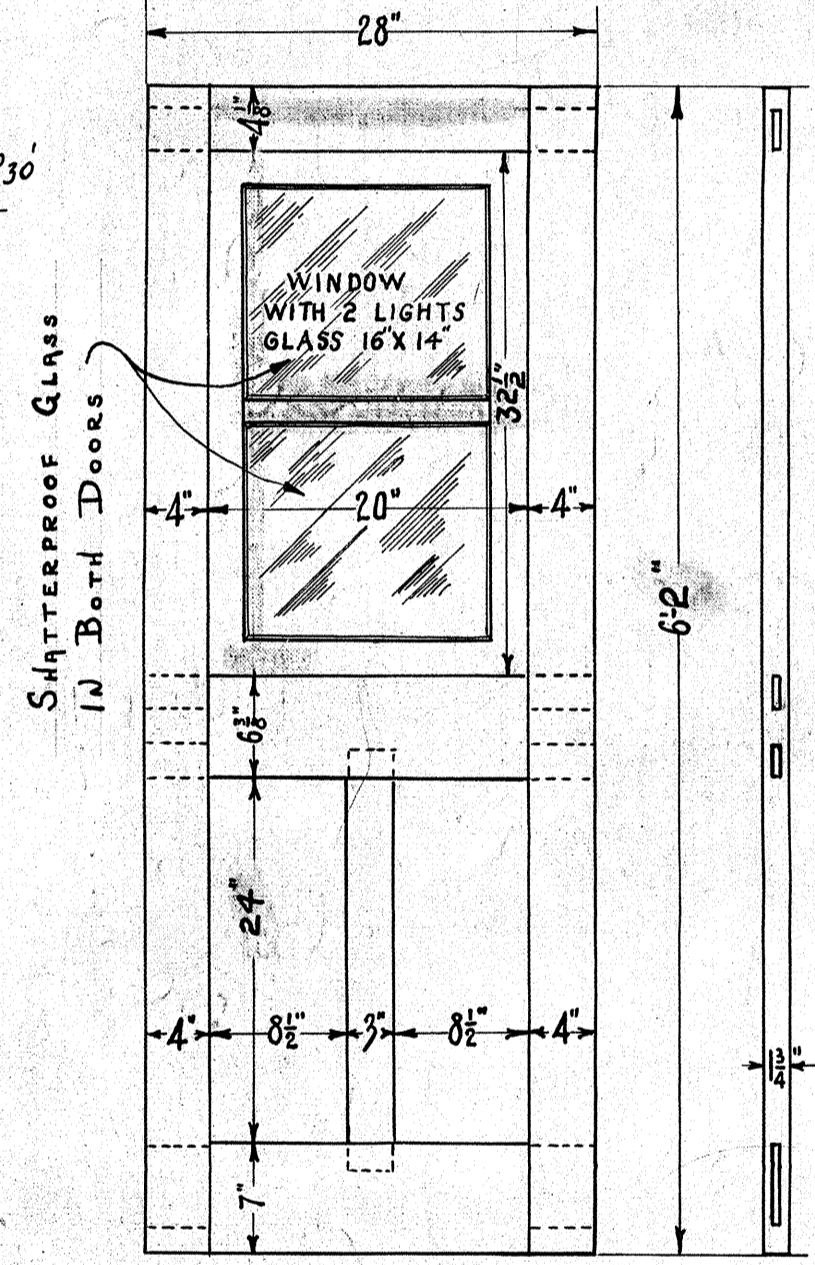
-SIDE CORNER POST- OAK- 2R. 2L.

END CORNER POST- 2R. 2L. OAK

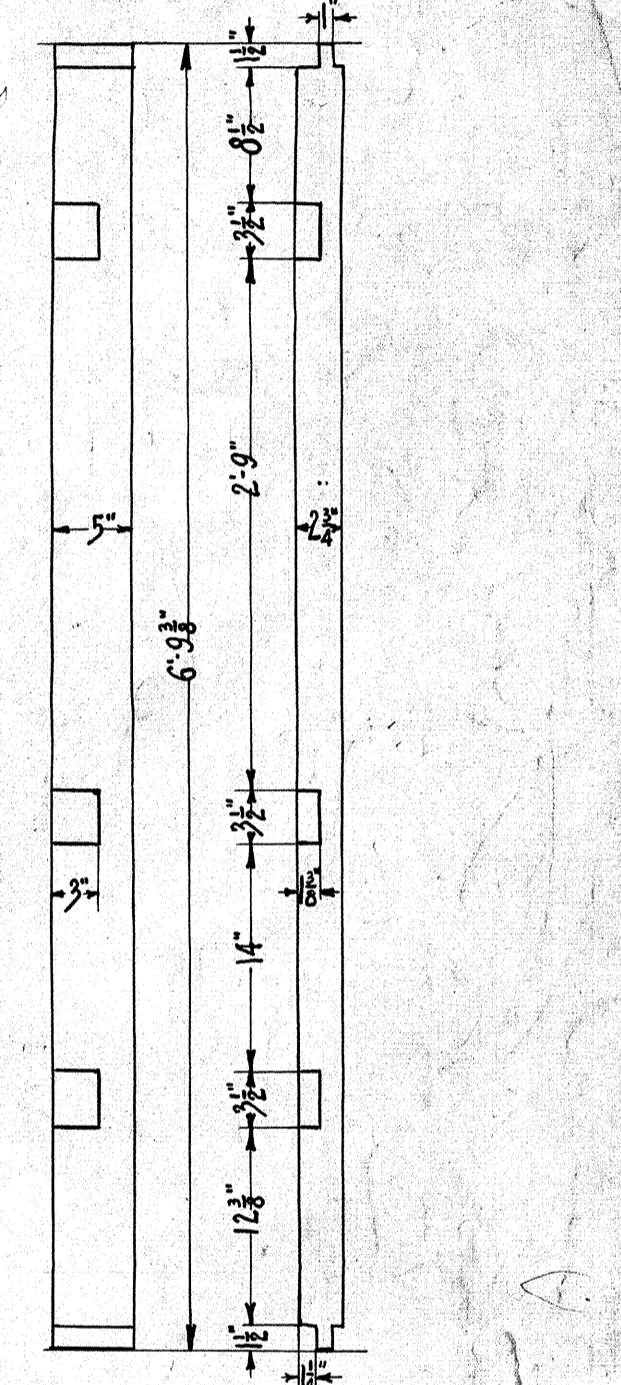
END POST- OAK- 4 REQ.



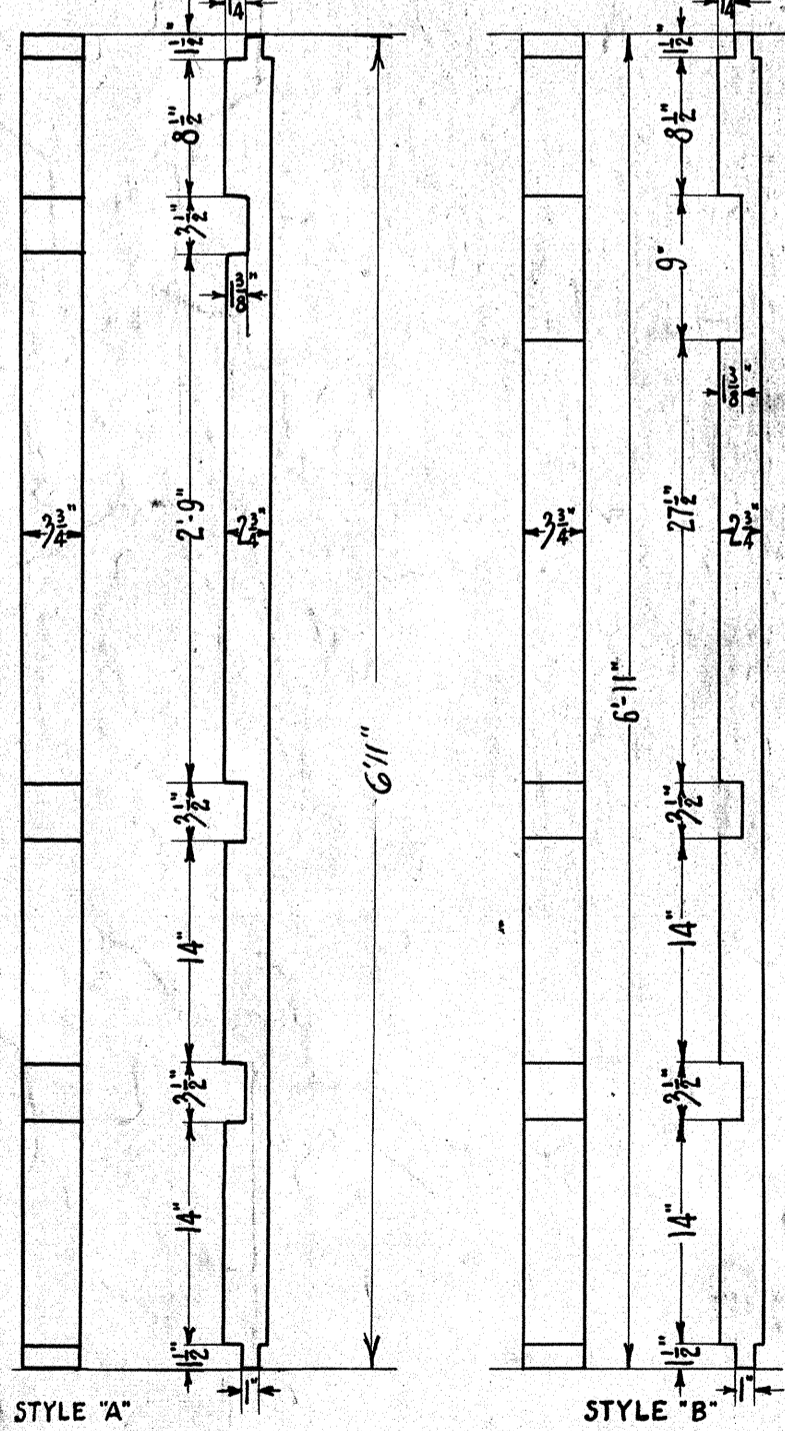
CUPOLA END BRACE- PINE- 4 REQ.



DOOR- OAK- 2 REQ.

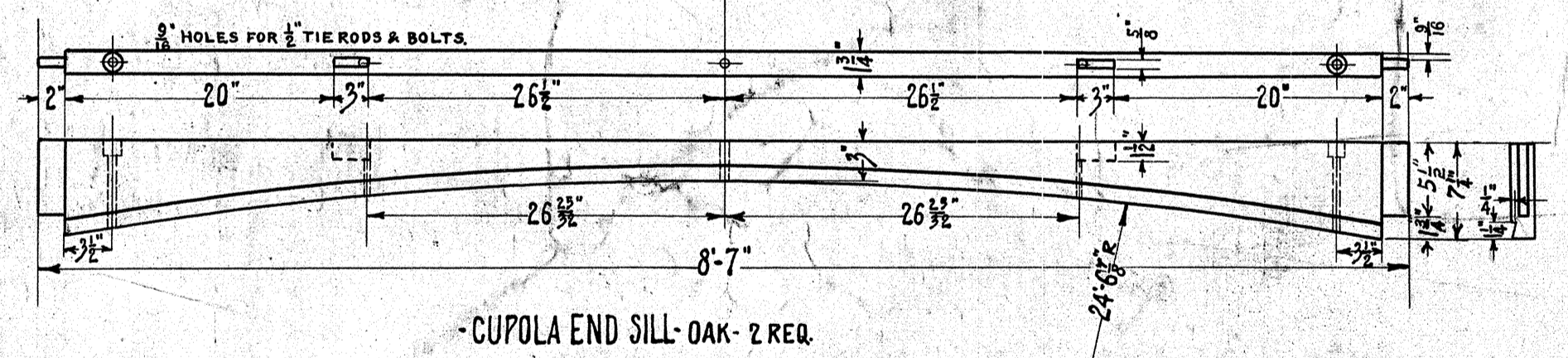


-DOOR POST- YELLOW PINE- 2R. 2L.

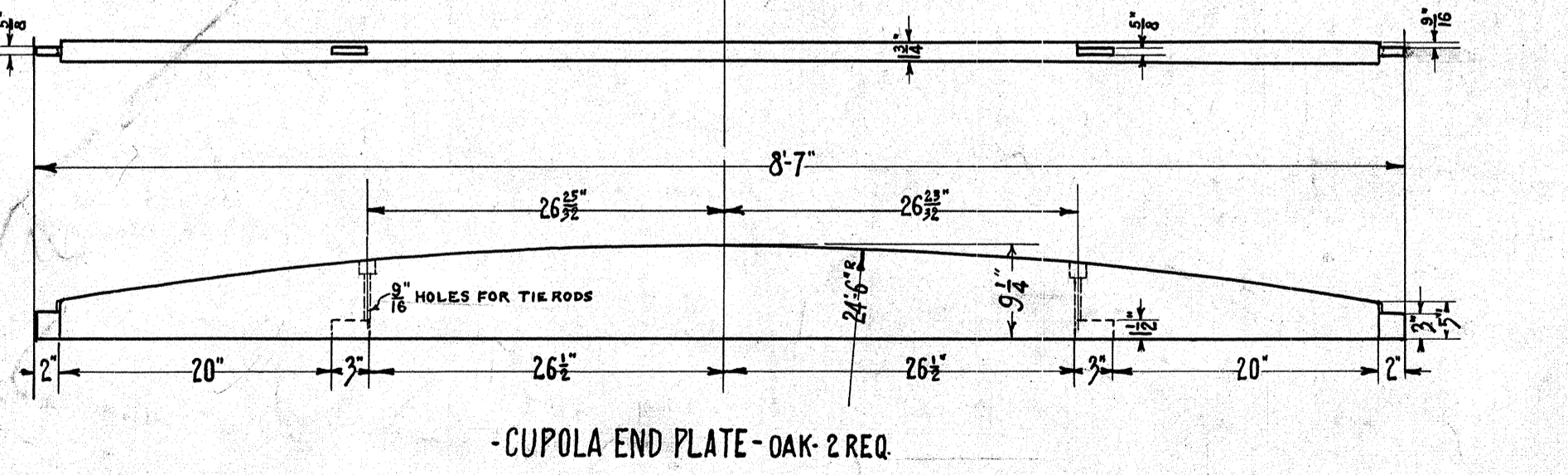


SIDE POST- Y.P.

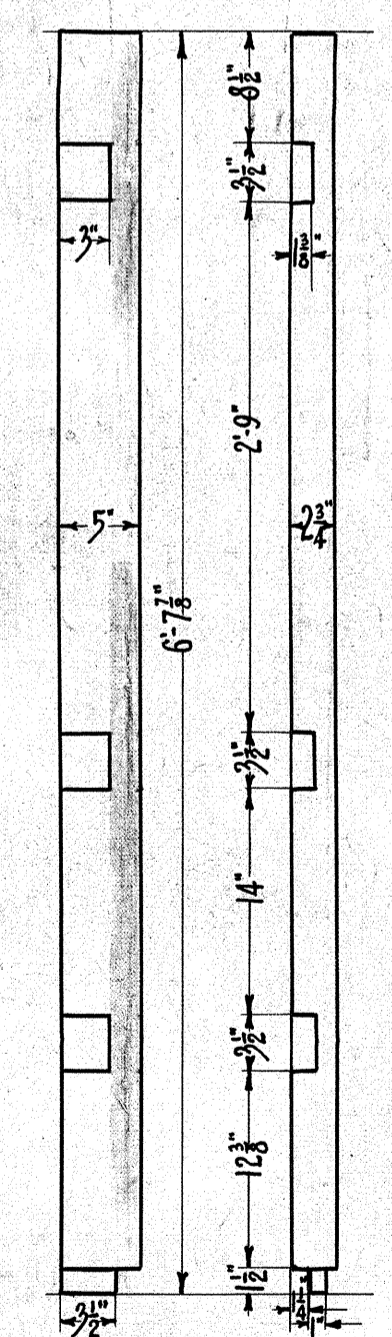
12 REQ. STYLE 'A' 12 REQ. STYLE 'B'



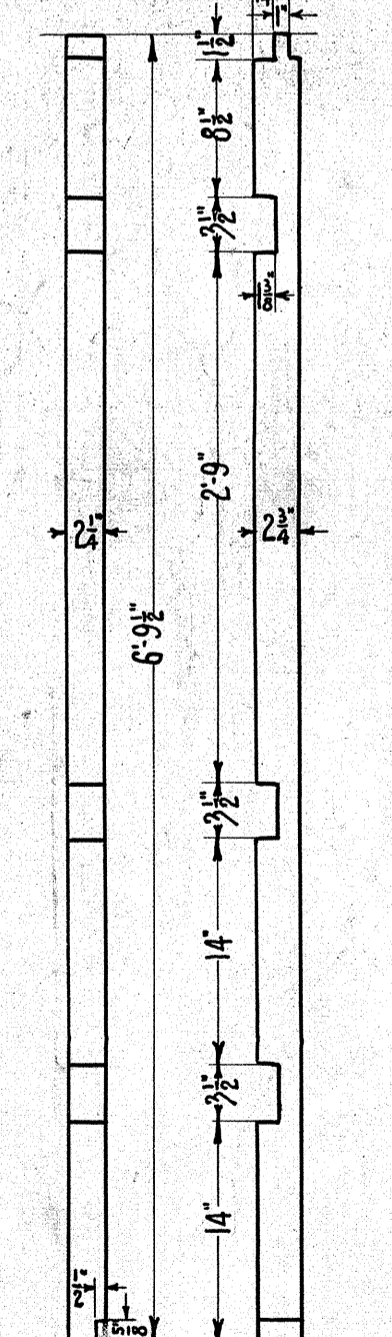
CUPOLA END SILL- OAK- 2 REQ.



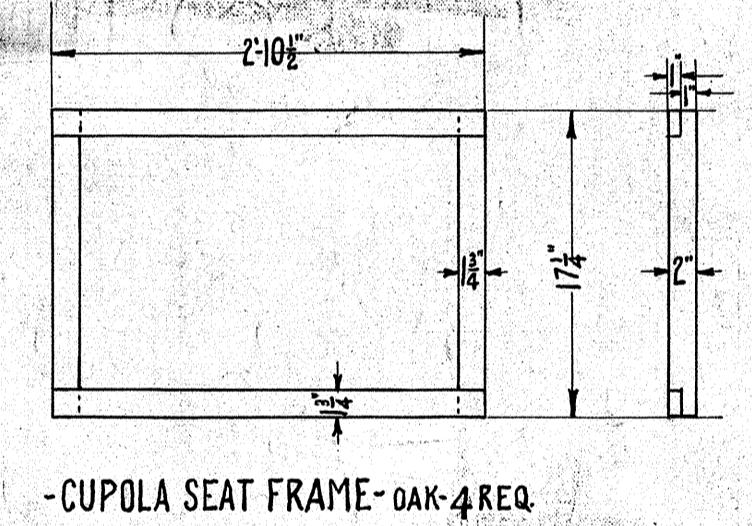
-CUPOLA END PLATE- OAK- 2 REQ.



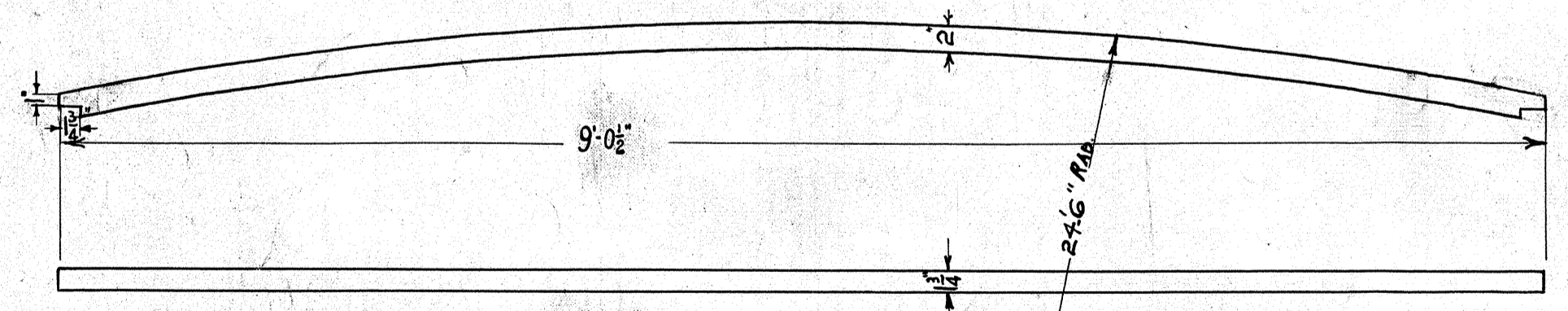
END CORNER POST- Y.P. 2R. 2L.



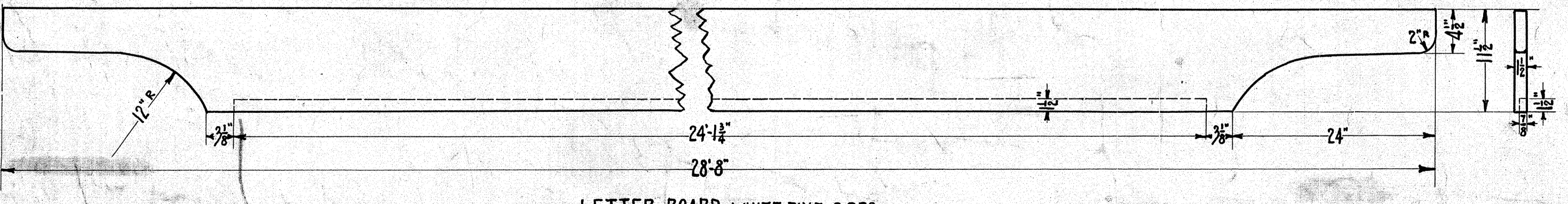
-SIDE CORNER POST- Y.P. 2R. 2L.



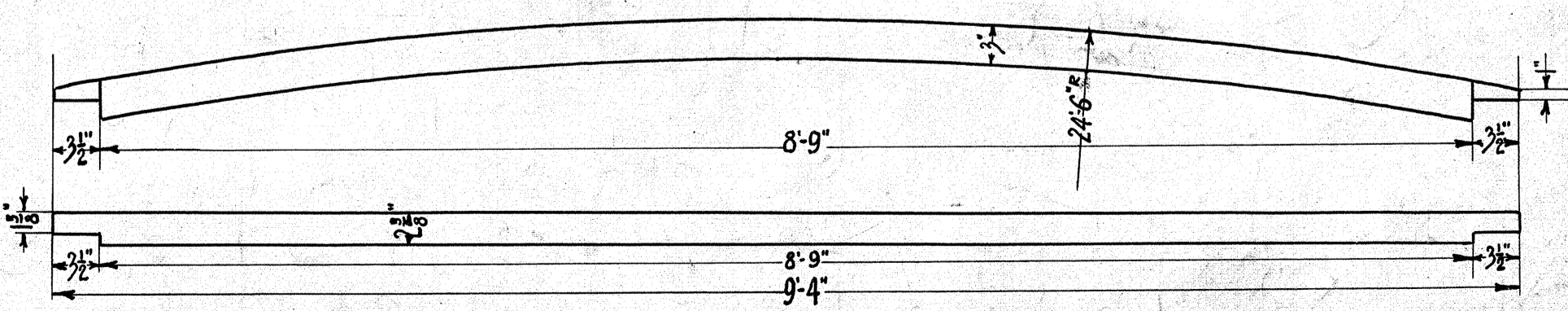
-CUPOLA SEAT FRAME- OAK- 4 REQ.



-CUPOLA CARLINE- OAK- 2 REQ. AS SHOWN. 2 - 9'-4\"/>



-LETTER BOARD- WHITE PINE- 2 REQ.



-HOOD CARLINE- OAK- 2 REQ.

CABOOSE G-2  
TYPE CLASS

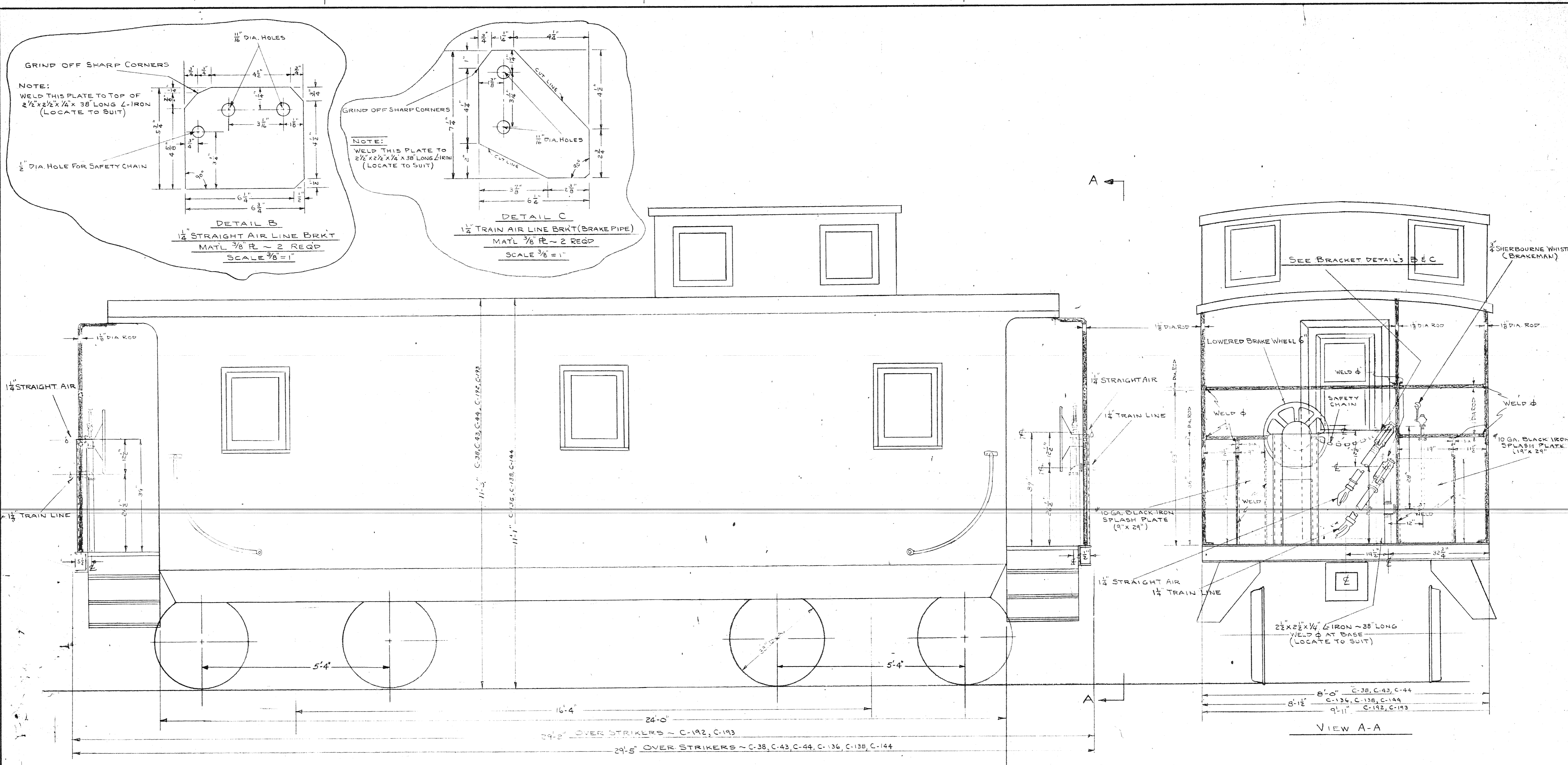
FRAMING DETAILS

M. P. & C. Dept. D. M. & N. Ry. Co.  
Proctor, Minn. MARCH 14, 1924

APPROVED  
W. J. Anderson  
SUPERVISOR

SPECIFIED SHATTERPROOF GLASS FOR DOORS A 7-17-25  
SUBJECT Rev. DATE


405



**SIDE ELEVATION**  
SCALE 3/4" = 1'-0"

**VIEW A-A**

**NOTES:**  
STRAIGHT AIR RETAINER PIPING INSTALLED ON THE FOLLOWING WOOD CABOOSES ~ C-38, C-43, C-44, C-136, C-138, C-144  
FOR GENL STRAIGHT AIR LINE PIPING LAYOUT SEE MECH. DEPT DWG. NO. 10078 REV. D

REVISIONS	REFERENCE DRAWINGS	SCALE	DULUTH MISSABE AND IRON RANGE RY. CO.	TITLE	PROJ. NO.
	MECH. DEPT. DWG. NO. 10078 REV. D	AS SHOWN	MISSABE BLDG.  DULUTH, MINN.	TYPICAL WOOD CABOOSE END PLATFORM & AIR PIPING ARRANGEMENT	745003
		DRAWN: H. J. L.	ENGINEERING SERVICES DEPARTMENT		A.P.E. NO.
		DATE: 1-9-74	APPROVED:		SHEET NO. CONTINUED
		CHECKED:			1 OF 1
		DATE:	ENGINEER	DIVISION MISSABE LOCATION PROCTOR	
		SUB. DEPT. O.K.			
		DATE:			

*Handwritten signature*